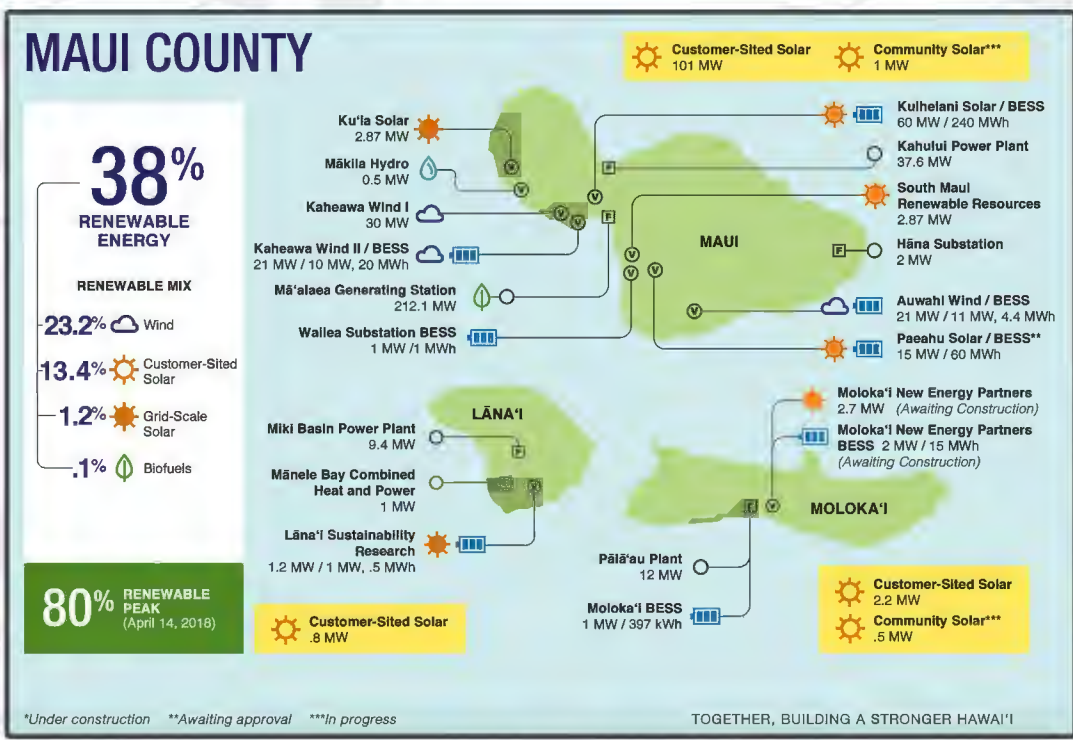


100% Renewable Energy What Will Maui Look Like?



Renewable Portfolio Standard - RPS

The Hawaiian Electric Companies' RPS Status Report is filed annually with the Public Utilities Commission and calculates the RPS percentage based on total sales for the previous calendar year in accordance with the RPS law. This RPS Compliance metric estimates the percent of sales that is represented by renewable energy.



In 2018, 38 percent of electricity used by Maui Electric customers came from renewable energy resources, such as solar, wind and biofuel, well ahead of the state's target of 30 percent by the year 2020. We've also lowered greenhouse gas emissions from our generators and reduced the amount of oil we used.

Presented By:



Maui Electric



Speaker Bios



KUMU KAPONO'AI MOLITAU, *Kumu Hula*

Kumu Kapono'ai was born on the island of O'ahu and raised traditionally with cultural guidance of one of Hawai'i's leading authorities, the late Kumu John Keola Lake. Today, he is a cultural authority on traditional customary practices in Hawaiian protocol, Hula, Oli, 'Ölelo Hawai'i, and Pule Kāhea. He and his sister, Kumu Naomi Sissy Lake Farm, have transmitted cultural knowledge to their hālau Nā Hanona Kūlike 'O Pi'ilani for the past 15 years. He is the leading Kahuna Nui or high priest of Pu'ukoholā Heiau, the highest temple in Hawai'i that was built by Kamehameha I in the unification of all of Hawai'i. With over 30 years of study in both traditional and western education, he continues to enhance cultural mindsets throughout the world pushing for cultural realism of Hawai'i's host culture.



ALBERT PEREZ, *Executive Director, Maui Tomorrow Foundation*

Albert is one of the original founders of the Maui Tomorrow Foundation. He was born and raised in Hawai'i and earned a Master's Degree in Urban and Regional Planning from the University of Hawai'i at Mānoa. Albert has worked at the State of Hawai'i Office of Coastal Zone Management, the Washington State Department of Transportation, and the County of Maui. He has previously been involved with the Sierra Club Hawai'i, the Wilderness Society, and Life of the Land.



CHRIS REYNOLDS, *Director, System Operations, Maui Electric Company*

Responsible for maintaining the electrical grids on Maui, Moloka'i and Lāna'i, Chris oversees the Dispatch division and the management of the supervisory control and data acquisition (SCADA) and Emergency Management System (EMS) control systems that use networked data communications and computer aided tools to manage the electrical grids. Chris has served in various positions across the company and has participated in the integration of a variety of high-profile renewable integration projects, including the installation of a Battery Energy Storage System, the Maui Smart Grid Demonstration Project, the Maui Advanced Solar Initiative, and the Hitachi JUMPSmart project. He received Associate in Applied Science (AAS) degrees in both Architecture and Construction Management from Southern Illinois University.



ALEX DE ROODE, *Energy Commissioner, County of Maui*

Alex de Roode is a professional planner, educator, and entrepreneur, with a focus in sustainability and energy systems. He has served as a long-range master Planner for the County of Maui Department of Water Supply, the Executive Director of the Sustainable Living Institute of Maui (SLIM) at the University of Hawai'i Maui College (UHMC), the District Sustainability Manager for the Portland Community College (PCC), and as the Director of Sustainability and Business Development for Maui-based green building and energy consulting firm Green Building Hawai'i. He has a master of science degree in Bioresource Engineering from McGill University and is currently pursuing a PhD in Energy and Building Systems Engineering with a focus in energy resilience. Alex is also a LEED Accredited Professional and a Certified Energy Manager (CEM).



DANA SATO, *Asset Management Director, Kamehameha Schools*

Dana oversees land and asset management activities on Kamehameha Schools' agricultural, conservation and residential lands on the islands of Maui, Moloka'i, Kaua'i, and O'ahu. She was born on Wake Island and raised on Maui. She is a graduate of H.P. Baldwin High School, Gonzaga University and the University of Hawai'i's William S. Richardson School of Law.



ROB WELTMAN, *Chairperson, Sierra Club Maui Group*

Weltman represents the Sierra Club Maui Group on energy issues. His background is in software engineering and natural languages, including the Hawaiian language. His goal is a future where the people of Maui care for and cherish its environment and culture, and the 'āina in turn provides for the needs of its people.