



March 27, 2020

The Honorable Chair and Members  
of the Hawai'i Public Utilities Commission  
Kekuanao'a Building, First Floor  
465 South King Street  
Honolulu, Hawai'i 96813

Dear Commissioners:

Subject: Hawai'i Electric Light Energy Cost Recovery Factor for April 2020

Hawai'i Electric Light Company, Inc.'s ("Hawai'i Electric Light") Energy Cost Recovery factor for April 2020 is 15.644 cents per kilowatt-hour ("kWh"), a decrease of 1.78 cents per kWh from last month. A residential customer consuming 500 kWh of electricity will be paying \$179.61, a decrease of \$9.11 compared to rates effective March 1, 2020. The decrease in the residential bill is due to the decrease in the Energy Cost Recovery Factor (-\$8.90), decrease in the Purchased Power Adjustment Clause (-\$0.08), and credit for the SolarSaver Adjustment (-\$0.13).

Hawai'i Electric Light's fuel composite cost of generation decreased 84.46 cents per million BTU to 1,273.93 cents per million BTU. The composite cost of distributed generation remains at 0 cents per kWh. The composite cost of purchased energy decreased 1.99 cents per kWh to 12.228 cents per kWh.

The attached sheets set forth the energy cost recovery factor in cents per kWh for each rate schedule that is applicable for pro rata use beginning April 1, 2020.

Sincerely,

/s/ Sharon M. Suzuki

Sharon M. Suzuki

President

Maui County and Hawai'i Island Utilities

Attachments

cc: Division of Consumer Advocacy

## HAWAII ELECTRIC LIGHT COMPANY, INC.

ENERGY COST RECOVERY FACTOR

	<u>EFFECTIVE DATES</u>		
	<u>3/01/20</u>	<u>4/01/20</u>	<u>Change</u>
<u>Composite Cost</u>			
Generation, ¢/mmbtu	1,358.39	1,273.93	(84.46)
Dispersed Generation Energy, ¢/kWh	0.000	0.000	0.00
Purchased Energy, ¢/kWh	14.217	12.228	(1.99)
<u>Residential Schedule "R"</u>			
Energy Cost Recovery - ¢/kWh	17.424	15.644	(1.78)
<u>Others - "G,J,P,F"</u>			
Energy Cost Recovery - ¢/kWh	17.424	15.644	(1.78)
Residential Customer with:			
500 KWH Consumption - \$/Bill	\$188.72	\$179.61	(\$9.11)
600 KWH Consumption - \$/Bill	\$225.90	\$214.96	(\$10.94)

HAWAII ELECTRIC LIGHT COMPANY, INC.  
ENERGY COST RECOVERY (ECR) FILING

ENERGY COST RECOVERY (ECR) FILING - April 1, 2020 (Page 1 of 2)

Line

1 Effective Date April 1, 2020  
2 Supercedes Factors of March 1, 2020

**GENERATION COMPONENT**

<b><u>CENTRAL STATION WITH WIND/HYDRO COMPONENT</u></b>						
FUEL PRICES, ¢/mmbtu						
3						
4	Hill Industrial		1,061.49			
5	Puna Industrial		1,084.11			
6	Keahole Diesel		1,425.50			
6a	Keahole ULSD		1,673.97			
7	Waimea ULSD Diesel		1,658.71			
8	Hilo Diesel		1,391.79			
8a	Hilo (Kanoelehua) ULSD Diesel <sup>1</sup>		1,628.39			
9	Puna Diesel		1,396.51			
10	Wind		0.00			
11	Hydro		0.00			
BTU MIX, %						
12						
13	Hill Industrial		34.174			
14	Puna Industrial		6.629			
15	Keahole Diesel		50.465			
15a	Keahole ULSD		0.000			
16	Waimea ULSD Diesel		0.000			
17	Hilo Diesel		1.597			
17a	Hilo (Kanoelehua) ULSD Diesel <sup>1</sup>		0.000			
18	Puna Diesel		6.996			
19	Wind		0.000			
20	Hydro		0.139			
			100.000			
21	COMPOSITE COST OF GENERATION, CENTRAL STATION + WIND/HYDRO ¢/mmbtu		1,273.93			
22	% Input to System kWh Mix		51.054			
EFFICIENCY FACTOR, mmbtu/kWh						
	(A)	(B)	(C)	(D)		
			Percent of			
			Centrl Stn +	Weighted		
	<u>Fuel Type</u>	<u>Eff Factor</u>	<u>Wind/Hydro</u>	<u>Eff Factor</u>		
		<u>mmbtu/kwh</u>				
23	Industrial	0.014389	40.803	0.005871		
24	Diesel	0.010580	59.058	0.006248		
25	Other	0.011999	0.1390	0.0000		
	(Lines 23, 24, 25): Col(B) x Col(C) = Col(D)		100.0000			
26	Weighted Efficiency Factor, mmbtu/kWh [Lines 23(D) + 24(D) + 25(D)]			0.0121360		
27	WEIGHTED COMPOSITE CENTRAL STATION + WIND/HYDRO GENERATION COST, ¢/kWh (Lines (21 x 22 x 26))			7.89316		
28	BASE CENTRAL STATION + WIND/HYDRO GENERATION COST, ¢/mmbtu			0.00		
29	Base % Input to Sys kWh Mix			0.00		
30	Efficiency Factor, mmbtu/kwh			0.000000		
31	WEIGHTED BASE CENTRAL STATION + WIND/HYDRO GENERATION COST ¢/kWh (Lines (28 x 29 x 30))			0.00000		
32	COST LESS BASE (Line 27 - 31)			7.89316		
33	Revenue Tax Req Multiplier			1.0975		
34	CENTRAL STATION + WIND/HYDRO GENERATION FACTOR, ¢/kWh (Line (32 x 33))			8.66274		
				<b><u>DG ENERGY COMPONENT</u></b>		
				35	COMPOSITE COST OF DG ENERGY, ¢/kWh	0.000
				36	% Input to System kWh Mix	0.000
				37	WEIGHTED COMPOSITE DG ENERGY COST, ¢/kWh (Lines 35 x 36)	0.00000
				38	BASE DG ENERGY COMPOSITE COST	0.000
				39	Base % Input to System kWh Mix	0.00
				40	WEIGHTED BASE DG ENERGY COST, ¢/kWh (Line 38 x 39)	0.00000
				41	Cost Less Base (Line 37 - 40)	0.00000
				42	Loss Factor	1.072
				43	Revenue Tax Req Multiplier	1.0975
				44	DG FACTOR, ¢/kWh (Line 41 x 42 x 43)	0.00000
				SUMMARY OF		
				TOTAL GENERATION FACTOR, ¢/kWh		
				45	Cntrl Stn+Wind/Hydro (line 34)	8.66274
				46	DG (line 44)	0.00000
				47	TOTAL GENERATION FACTOR, ¢/kWh (lines 45 + 46)	8.66274

<sup>1</sup> Hilo ULSD same location as Kanoelehua ULSD



**Hawaii Electric Light Company, Inc.**  
FUEL OIL INVENTORY PRICES FOR April 1, 2020

**INDUSTRIAL FUEL COSTS:**

	<u>HILO</u>	<u>PUNA</u>
Average Industrial Fuel Cost - \$/BBL	66.8737	66.8737
Land Transportation Cost - \$/BBL	--	1.4255
Industrial Costs For Filing - \$/BBL	66.8737	68.2992
Conversion Factors - mmbtu/BBL	6.30	6.30
Industrial Costs For Filing - ¢/mmbtu	1,061.49	1,084.11

**DIESEL FUEL COSTS:**

	KEAHOLE	PUNA CT-3	HILO
Average Diesel Fuel Cost - \$/BBL	80.3504	80.3504	80.3504
Land Transportation Cost - \$/BBL	3.1841	1.4854	1.2088
Diesel Costs For Filing - \$/BBL	83.5344	81.8357	81.5591
Conversion Factors - mmbtu/BBL	5.86	5.86	5.86
Diesel Costs For Filing - ¢/mmbtu	1,425.50	1,396.51	1,391.79

**ULSD FUEL COSTS:**

	KEAHOLE	WAIMEA	HILO	DISPERSED GENERATION
Average ULSD Fuel Cost - \$/BBL	92.0717	92.0717	92.0717	92.0717
Land Transportation Cost - \$/BBL	3.8468	2.9722	1.2350	-
ULSD Costs For Filing - \$/BBL	95.9185	95.0438	93.3066	92.0717
Conversion Factors - mmbtu/BBL	5.73	5.73	5.73	5.73
ULSD Costs For Filing - ¢/mmbtu	1,673.97	1,658.71	1,628.39	1,606.84

**Dispersed Generation, cents per kWh**

	COMPOSITE COST OF DISP. GEN.
BBIs Fuel:	0.0000
\$/BBI Inv Cost:	92.0717
Fuel \$ (Prod Sim Consumption x Unit Cost)	0.00
Net kWh (from Prod Sim)	0
cents/kWh:	#DIV/0!

HAWAII ELECTRIC LIGHT CO., INC.  
Estimated Weighted Average  
March 2020

	SHIPMAN INDUSTRIAL		HILL INDUSTRIAL		COST PER BARREL		
	BBL	COST	BBL	COST	EXCL LT	LT Total	
Balance at 02/29/2020	0	0.00	31,071	1,991,567.12			
Less: Est'd Inventory Addn			0	0.00			
Purchases: Estimate	xxxxxx	xxxxxxxxxxxxxxxxxxxx	xxxxxxxxxx	xxxxxxxxxxxxxxxxxxxx			
Actual	xxxxxx	xxxxxxxxxxxxxxxxxxxx	xxxxxxxxxx	xxxxxxxxxxxxxxxxxxxx			
Transfers out: Estimate	xxxxxx	xxxxxxxxxxxxxxxxxxxx	xxxxxxxxxx	xxxxxxxxxxxxxxxxxxxx			
Actual	xxxxxx	xxxxxxxxxxxxxxxxxxxx	xxxxxxxxxx	xxxxxxxxxxxxxxxxxxxx			
Transfers in: Estimate	0	0.00	(22,932)	(1,522,861.39)			
Actual	0	0.00	27,735	1,883,467.81			
Consumed: Estimate	0	0.00	29,746	1,806,898.95			
Actual	0	0.00	(29,580)	(1,746,058.29)			
Balance Per G/L 02/29/2020	0	0.00	36,040	2,413,014.20			
Purchases	xxxxxx	xxxxxxxxxxxxxxxxxxxx	xxxxxxxxxx	xxxxxxxxxxxxxxxxxxxx			
Transfer out	xxxxxx	xxxxxxxxxxxxxxxxxxxx	xxxxxxxxxx	xxxxxxxxxxxxxxxxxxxx			
Transfer in	0	0.00	31,175	2,101,977.24			
Consumed	0	0.00	(31,698)	(2,134,833.20)	106.5901	0.0000	106.5901
Balance @ 03/31/2020	0	0.00	35,517	2,380,158.24			
Inv From Offsite/Transfers	0	0.00	0	0.00			
Est'd Inventory Addition	0	0.00	0	0.00			
Fuel Balance @ 03/31/2020	0	0.00	35,517	2,380,158.24			
Reverse Fuel Balance	xxxxxx	0.00	xxxxxx	(2,380,158.24)			
Fuel Bal @ Avg Price	xxxxxx	0.00	xxxxxx	2,375,153.28			
Total @ 04/01/2020 Avg Price	0	0.00	35,517	2,375,153.28			

Weighted Avg Cost/BBL by Location #DIV/0! 67.0146

Weighted Avg Cost/BBL @ Avg Cost #DIV/0! 66.8737

**HAWAII ELECTRIC LIGHT CO., INC.**  
Estimated Weighted Average  
March 2020

PUNA INDUSTRIAL

	BBL	COST	LAND TRANSP	COST PER BARREL		TOTAL
				EXCLUDE LT	LT	
Balance at 02/29/2020	8,860	586,198.27	13,753.01			
Less: Est'd Inventory Addition	0	0.00	0.00			
Purchases: Estimate	XXXXXXXXXXXX	XXXXXXXXXXXX	XXXXXXXXXXXX			
Actual	XXXXXXXXXXXX	XXXXXXXXXXXX	XXXXXXXXXXXX			
Transfers out: Estimate	XXXXXXXXXXXX	XXXXXXXXXXXX	XXXXXXXXXXXX			
Actual	XXXXXXXXXXXX	XXXXXXXXXXXX	XXXXXXXXXXXX			
Transfers in: Estimate	(4,751)	(304,345.88)	(6,249.04)			
Actual	4,011	254,649.06	5,473.00			
Consumed: Estimate	4,675	283,979.44	6,169.69			
Actual	<u>(3,869)</u>	<u>(222,851.47)</u>	<u>(5,707.06)</u>			
Balance Per G/L 02/29/2020	<u>8,926</u>	<u>597,629.43</u>	<u>13,439.60</u>			
Purchases	XXXXXXXXXXXX	XXXXXXXXXXXX	XXXXXXXXXXXX			
Transfer out	XXXXXXXXXXXX	XXXXXXXXXXXX	XXXXXXXXXXXX			
Transfer in	2,926	186,307	3,848.60			
Consumed	(3,103)	<u>(208,984.40)</u>	(4,816.66)	67.3491	1.5523	68.9014
Balance @ 03/31/2020	<u>8,749</u>	<u>574,952.46</u>	<u>12,471.54</u>			
Inventory From Offsite/Transfers	0	0.00	0.00			
Est'd Inventory Addition	0	0.00	0.00			
Fuel Bal @ Avg Price	<u>8,749</u>	<u>574,952.46</u>	<u>12,471.54</u>		<u>1.4255</u>	
Reverse Fuel Balance	XXXXXXXXXXXX	(574,952.46)	XXXXXXXXXXXX			
Fuel Balance @ Avg Price	XXXXXXXXXXXX	585,078.02	XXXXXXXXXXXX			
Total @ 04/01/2020 Avg Price	<u>8,749</u>	<u>585,078.02</u>	<u>12,471.54</u>			

Weighted Avg Cost/BBL by Location

65.7164

1.4255

Weighted Avg Cost/BBL @ Avg Cost

66.8737

1.4255

**HAWAII ELECTRIC LIGHT CO., INC.**  
Estimated Weighted Average  
March 2020

KEAHOLE DIESEL

HS Diesel	BBL	GALLONS	COST EXCLUDE LT	LAND TRANSP	COST PER EXCLUD LT	BARREL LT	TOTAL
Balance at 02/29/2020	27,710.7	1,163,850.0	2,525,329.4	76,562.7			
Less: Est'd Inventory Addition	0.0	0.0	0.0	0.0			
Purchases: Estimate	(3,990.0)	(167,580.0)	(370,351.8)	0.0			
Actual	3,777.6	158,660.0	349,920.2	0.0			
Transfers out: Estimate		XXXXXXXXXXXXXXXXXX	XXXXXXXXXXXXXXXXXX	XXXXXXXXXXXXXXXXXX			
Actual		XXXXXXXXXXXXXXXXXX	XXXXXXXXXXXXXXXXXX	XXXXXXXXXXXXXXXXXX			
Transfers in: Estimate	(36,158.1)	(1,518,640.0)	(3,241,085.3)	(102,811.9)			
Actual	40,836.7	1,715,142.0	3,702,182.5	126,458.12			
Consumed: Estimate	52,779.5	2,216,737.0	4,723,772.4	156,201.92			
Actual	(51,598.0)	(2,167,114.0)	(4,628,458.0)	(140,937.3)	89.7024		
Balance Per G/L 02/29/2020	33,358.5	1,401,055	3,061,309.42	115,473.60	91.7701		
Purchases	XXXXXXXXXXXX	XXXXXXXXXXXXXXXXXX	XXXXXXXXXXXXXXXXXX	XXXXXXXXXXXXXXXXXX			
Transfer out	XXXXXXXXXXXX	XXXXXXXXXXXXXXXXXX	XXXXXXXXXXXXXXXXXX	XXXXXXXXXXXXXXXXXX			
Transfer in	59,698.7	2,507,344.0	4,928,640.9	169,747.2	82.5586		
Consumed	(52,021.2)	(2,184,892.0)	(4,739,576.1)	(153,957.97)	91.1085	2.9595	94.0680
Balance @ 03/31/2020	41,224.9	1,731,445	3,265,798.34	131,262.81	79.2191		
Inventory From Offsite/Transfers	0.0	0.0	0.0	0.00			
Est'd Inventory Addition	0.0	0	0.0	0.00			
Fuel Balance @ Avg Price	41,224.9	1,731,445	3,265,798.34	131,262.81	79.2191		
Reverse Fuel Balance	XXXXXXXXXXXX	XXXXXXXXXXXXXXXXXX	(3,265,798.3)	XXXXXXXXXXXXXXXXXX			
Fuel Balance @ Avg Price	XXXXXXXXXXXX	XXXXXXXXXXXXXXXXXX	3,312,434.9	XXXXXXXXXXXXXXXXXX			
Total @ 04/01/2020 Avg Price	41,224.9	1,731,445	3,312,434.89	131,262.81	80.3504		

Weighted Avg Cost/BBL by Location

79.2191

3.1841

Weighted Avg Cost/BBL @ Avg Cost

80.3504

3.1841



HAWAII ELECTRIC LIGHT CO., INC.  
Estimated Weighted Average  
March 2020

PUNA CT-3

HS Diesel	BBL	GALLONS	COST EXCLUD LT	LAND TRANSP	COST PER EXCL LT	BARREL LT	TOTAL
Balance at 02/29/2020	3,708.2	155,745.0	337,355.8	5,330.1			
Less: Est'd Inven Addition	0.0	0.0	0.0	0.0			
Purchases: Estimate		XXXXXXXXXXXXXXXXXX	XXXXXXXXXXXXXXXXXX	XXXXXXXXXXXXXXXXXX			
Actual		XXXXXXXXXXXXXXXXXX	XXXXXXXXXXXXXXXXXX	XXXXXXXXXXXXXXXXXX			
Transfers out: Estimate		XXXXXXXXXXXXXXXXXX	XXXXXXXXXXXXXXXXXX	XXXXXXXXXXXXXXXXXX			
Actual		XXXXXXXXXXXXXXXXXX	XXXXXXXXXXXXXXXXXX	XXXXXXXXXXXXXXXXXX			
Transfers in: Estimate	(5,752.3)	(241,596.0)	(518,478.1)	(6,378.1)			
Actual	6,232.0	261,745.0	586,341.6	6,908.5			
Consumed: Estimate	4,763.1	200,050.0	426,298.1	5,899.8			
Actual	(3,932.0)	(165,144.0)	(371,286.7)	(3,692.1)			
Balance Per G/L 02/29/2020	5,019.0	210,800	460,230.60	8,068.18			
Purchases		XXXXXXXXXXXXXXXXXX	XXXXXXXXXXXXXXXXXX	XXXXXXXXXXXXXXXXXX			
Transfer out		XXXXXXXXXXXXXXXXXX	XXXXXXXXXXXXXXXXXX	XXXXXXXXXXXXXXXXXX			
Transfer in	1,843.8	77,440.0	147,009.9	2,044.4	79.7316		
Consumed	(1,693.6)	(71,130)	(154,298.72)	(2,434.32)	91.1085	1.4374	92.5459
Balance @ 03/31/2020	5,169.3	217,110	452,941.78	7,678.28	87.6217		
Inven From Offsite/Transfers	0.0	0	0.00	0.00			
Est'd Inventory Addition	0.0	0	0.00	0.00			
Fuel Balance @ 03/31/2020	5,169.3	217,110	452,941.78	7,678.28	87.6217		
Reverse Fuel Balance		XXXXXXXXXXXXXXXXXX	(452,941.78)	XXXXXXXXXXXXXXXXXX			
Fuel Balance @ Avg Price		XXXXXXXXXXXXXXXXXX	415,354.08	XXXXXXXXXXXXXXXXXX			
Total @ 04/01/2020 Avg Price	5,169.3	217,110	415,354.08	7,678.28	80.3504		

Weighted Avg Cost/BBL by Location 87.6217 1.4854

Weighted Avg Cost/BBL @ Avg Cost 80.3504 1.4854

HAWAII ELECTRIC LIGHT CO., INC.  
Estimated Weighted Average  
March 2020

TOTAL HILO HS-DIESEL

HS Diesel	BBL	GALLONS	COST EXCLUDE LT	LAND TRANSP	COST PER EXCL LT	BARREL LT	TOTAL
Balance at 02/29/2020	1412.0	59,305	127,803	1,621			
Less: Est'd Inven Addition	0.0	0	0	0			
Purchases: Estimate		xxxxxxxxxxxx	xxxxxxxxxxxx	xxxxxxxxxxxx			
Actual		xxxxxxxxxxxx	xxxxxxxxxxxx	xxxxxxxxxxxx			
Transfers out: Estimate		xxxxxxxxxxxx	xxxxxxxxxxxx	xxxxxxxxxxxx			
Actual		xxxxxxxxxxxx	xxxxxxxxxxxx	xxxxxxxxxxxx			
Transfers in: Estimate	2.7	113.0	0.0	0.0			
Actual	-2.7	-113.0	0.0	0.0			
Consumed: Estimate	354.0	14869.0	31685.2	352.1			
Actual	-249.1	-10462.0	-20443.6	-145.0			
Balance Per G/L 02/29/2020	1517.0	63,712	139,044.37	1,828.59	91.6603		
Purchases		xxxxxxxxxxxx	xxxxxxxxxxxx	xxxxxxxxxxxx	xxxxxxxxxxxx		
Transfer out		xxxxxxxxxxxx	xxxxxxxxxxxx	xxxxxxxxxxxx	xxxxxxxxxxxx		
Transfer in	0.0	0.0	0.0	0.0	#DIV/0!		
Consumed	-83.3	-3498.0	-7588.0	-95.6	91.1085	1.1483	92.2568
Balance @ 03/31/2020	1,433.7	60,214	131,456.33	1,732.95	91.6924		
Inven From Offsite/Transfers	0.0	0.0	0.0	0.0			
Est'd Inventory Addition	0.0	0.0	0.0	0.0			
Fuel Balance @ Avg Price	1,433.7	60,214	131,456.33	1,732.95	91.6924		
Reverse Fuel Balance		xxxxxxxxxxxx	xxxxxxxxxxxx -131,456.33	xxxxxxxxxxxx			
Fuel Balance @ Avg Price		xxxxxxxxxxxx	xxxxxxxxxxxx 115,195.66	xxxxxxxxxxxx			
Total @ 04/01/2020 Avg Price	1,433.7	60,214	115,195.66	1,732.95	80.3504		

Weighted Avg Cost/BBL by Location

91.6924 1.2088

Weighted Avg Cost/BBL @ Avg Cost

80.3504 1.2088

**HAWAII ELECTRIC LIGHT CO., INC.**  
Estimated Weighted Average  
March 2020

KEAHOLE ULSD

ULSD	BBL	GALLONS	COST EXCLUDE LT	LAND TRANSP	COST PER BARREL EXCLUD LT	LT	TOTAL
Balance at 02/29/2020	1,970.7	82,771	180,991.44	6,352.49			
Less: Est'd Inventory Addition	0.0						
Purchases: Estimate	0.0	0	0.00	0.00			
Actual	0.0	0	0.00	0.00			
Transfers out: Estimate		xxxxxxxxxxxx	xxxxxxxxxxxx	xxxxxxxxxxxx			
Actual		xxxxxxxxxxxx	xxxxxxxxxxxx	xxxxxxxxxxxx			
Transfers in: Estimate		(164)	0.00	(11.10)			
Actual		167	0.00	0.00			
Consumed: Estimate	93.1	3,909	8,641.73	294.12			
Actual	(82.5)	(3,463)	(6,944.05)	1,099.32	84.2189		
Balance Per G/L 02/29/2020	1,981.4	83,220	182,689.12	7,734.83	92.2007		
Purchases	0.0	0	0.00	0.00	0.0000		
Estimated Purchases	190.0	7,980	15,391.82	540.25			
Transfer in	2.5	104	0.00	7.04	0.00		
Consumed	(129.2)	(5,427)	(12,041.87)	(416.51)	93.1930	3.2234	96.4165
Balance @ 03/31/2020	2,044.7	85,877	186,039.07	7,865.61	90.9864		
Inventory From Offsite/Transfers	0.0	0	0.00	0.00			
Est'd Inventory Addition	0.0	0	0.00	0.00			
Fuel Balance @ Avg Price	2,044.7	85,877	186,039.07	7,865.61	90.9864		
Reverse Fuel Balance	xxxxxxxxxxxx	xxxxxxxxxxxx	(186,039.07)	xxxxxxxxxxxx			
Fuel Balance @ Avg Price	xxxxxxxxxxxx	xxxxxxxxxxxx	188,258.08	xxxxxxxxxxxx			
Total @ 04/01/2020 Avg Price	2,044.7	85,877	188,258.08	7,865.61	92.0717		
Weighted Avg Cost/BBL by Location			90.9864	3.8468			
Weighted Avg Cost/BBL @ Avg Cost			92.0717	3.8468			

**HAWAII ELECTRIC LIGHT CO., INC.**  
Estimated Weighted Average  
March 2020

WAIMEA DIESEL

ULSD	BBL	GALLONS	COST EXCLUDE LT	LAND TRANSP	COST PER BARREL	LT	TOTAL
Balance at 02/29/2020	915.8	38,464.0	84,137.1	2,681.13			
Less: Est'd Inven Addition	0.0	0.0	0.00	0.00			
Purchases: Estimate		0	0.00	0.00			
Actual		0.0	0.0	0.00			
Transfers out: Estimate		xxxxxxxxxxxx	xxxxxxxxxxxx	xxxxxxxxxxxx			
Actual		xxxxxxxxxxxx	xxxxxxxxxxxx	xxxxxxxxxxxx			
Transfers in: Estimate	3.8	158	0.00	0.00			
Actual	(21.4)	(897)	0.00	0.00			
Consumed: Estimate	112.1	4,707	10,405.89	328.00			
Actual	(77.7)	(3,264)	(8,559.20)	(227.45)			
Balance Per G/L 02/29/2020	932.6	39,168	85,983.76	2,781.68	92.2007		
ULSD Purchases	0.0	0	0.00	0.00	#DIV/0!		
Estimated Purchases	-	0	0.00	0.00			
Transfer in	xxxxxxxxxxxx	209	0.00	0.00	#DIV/0!		
Consumed	(109.2)	(4,585)	(10,173.57)	(319.60)	93.1930	2.9276	96.1207
Balance @ 03/31/2020	828.4	34,792	75,810.19	2,462.09	91.5161		
Inven From Offsite/Transfers	0.0	0	0.00	0.00			
Est'd Inventory Addition	0.0	0	0.00	0.00			
Fuel Balance @ Avg Price	828.4	34,792	75,810.19	2,462.09	91.5161		
Reverse Fuel Balance	xxxxxxxxxxxx	xxxxxxxxxxxx	(75,810.19)	xxxxxxxxxxxx			
Fuel Balance @ Avg Price	xxxxxxxxxxxx	xxxxxxxxxxxx	76,270.42	xxxxxxxxxxxx			
Total @ 04/01/2020 Avg Price	828.4	34,792	76,270.42	2,462.09	92.0717		

Weighted Avg Cost/BBL by Location

91.5161 2.9722

Weighted Avg Cost/BBL @ Avg Cost

92.0717 2.9722

HAWAII ELECTRIC LIGHT CO., INC.  
Estimated Weighted Average  
March 2020

KANOELEHUA DIESEL

ULSD	BBL	GALLONS	COST EXCLUDE LT	LAND TRANSP		
Balance at 02/29/2020	690.5	28,999.0	68,409.9	986.0		
Less: Est'd Inventory Addition	0.0	0	0.00	0.00		
Purchases: Estimate	0.0	0	0.00	0.00		
Actual	0.0	0	0.00	0.00		
Transfers out: Estimate		x	x	x		
Actual		x	x	x		
Transfers in: Estimate		0	0.00	0.00		
Actual		0	0.00	0.00		
Consumed: Estimate	67.8	2,847	967.04	26.58		
Actual	(48.0)	(2,017)	(3,894.69)	(156.48)		
Balance Per G/L 02/29/2020	710.2	29,829	65,482.26	856.12		
ULSD Purchases	0	0	0.00	0.00	#DIV/0!	
Estimated Purchases	0	-	-	-		
Transfer in	0	0	0.00	0.00		
Consumed	(38.5)	(1,617)	(967.04)	(26.58)	93.19304989	1.4281
Balance @ 03/31/2020	671.7	28,212	64,515.22	829.54		
Inventory From Offsite/Transfers	0.0	0	0.00	0.00		
Est'd Inventory Addition	0.0	0	0.00	0.00		
Fuel Balance @ Avg Price	671.7	28,212	64,515.22	829.54		
Reverse Fuel Balance	x	x	(64,515.22)	x		
Fuel Balance @ Avg Price	x	x	61,845.86	x		
Total @ 04/01/2020 Avg Price	671.7	28,212	61,845.86	829.54		
Weighted Avg Cost/BBL by Location			96.0456	1.2350		
Weighted Avg Cost/BBL @ Avg Cost			92.0717	1.2350		

**HAWAII ELECTRIC LIGHT CO., INC.**  
Estimated Weighted Average  
March 2020

DISPERSED GENERATION

	BBL	GALLONS	COST	COST/BBL
Balance at 02/29/2020	101.6	4,267	9,281.08	
Less: Est'd Inven Addition	0.0	XXXXXXXXXXXXXXXXXXXX		
Purchases: Estimate	0.0	0	0.00	
Actual	43.7	1,835	4,047.09	
Consumed: Estimate	10.8	453	1,001.46	
Actual	(10.9)	(459)	(947.36)	
	XXXXXXXXXX	XXXXXXXXXX	XXXXXXXXXX	
	XXXXXXXXXX	XXXXXXXXXX	XXXXXXXXXX	
	XXXXXXXXXX	XXXXXXXXXX	XXXXXXXXXX	
	XXXXXXXXXX	XXXXXXXXXX	XXXXXXXXXX	
Balance Per G/L 02/29/2020	145.14	6,096	13,382.27	92.2007
Purchases	0.0	0	0.00	0.0000
Transfer out	XXXXXXXXXX	XXXXXXXXXX	XXXXXXXXXX	
Transfer in	XXXXXXXXXX	XXXXXXXXXX	XXXXXXXXXX	
Consumed	(7.9)	(331)	(734.45)	93.1930
Balance @ 03/31/2020	137.3	5,765	12,647.82	92.1437
Est'd Inventory Addition	0.0	0	0.00	
Fuel Balance @ 03/31/2020	137.3	5,765	12,647.82	
Reverse Fuel Balance	XXXXXXXXXX	XXXXXXXXXX	(12,647.82)	xxxx
Fuel Balance @ Avg Price	XXXXXXXXXX	XXXXXXXXXX	12,637.93	xxxx
Total @ 04/01/2020 Avg Price	137.3	5,765	12,637.93	92.0717

**HAWAII ELECTRIC LIGHT COMPANY, INC.**  
**CONTRACT PRICES EFFECTIVE March 1, 2020**

TYPE OF OIL BURNED

<b>INDUSTRIAL *</b>	<u>Hill Industrial</u>		<u>Puna Industrial</u>	
	<u>¢/MBTU</u>	<u>\$/BBL</u>	<u>¢/MBTU</u>	<u>\$/BBL</u>
Tax <sup>1</sup>	59.88	3.7721	59.88	3.7721
Ocean Transportation	53.55	3.3737	53.55	3.3737
Storage	35.24	2.2199	35.24	2.2199
Wharfage	6.35	0.4000	6.35	0.4000
Fees <sup>2</sup>	1.43	0.0900	1.43	0.0900
	<u>Hilo Diesel</u>		<u>Waimea Diesel</u>	
<b>DIESEL *</b>	<u>¢/MBTU</u>	<u>\$/BBL</u>	<u>¢/MBTU</u>	<u>\$/BBL</u>
Tax <sup>1</sup>	82.14	4.8131	82.07	4.8089
Ocean Transportation	57.57	3.3737	57.57	3.3737
Storage	29.31	1.7173	29.31	1.7173
Wharfage	6.83	0.4000	6.83	0.4000
Fees <sup>2</sup>	1.54	0.0900	1.54	0.0900
	<u>Kona Diesel</u>		<u>CT3 Diesel</u>	
	<u>¢/MBTU</u>	<u>\$/BBL</u>	<u>¢/MBTU</u>	<u>\$/BBL</u>
Tax <sup>1</sup>	82.07	4.8089	82.07	4.8089
Ocean Transportation	57.57	3.3737	57.57	3.3737
Storage	29.31	1.7173	29.31	1.7173
Wharfage	6.83	0.4000	6.83	0.4000
Fees <sup>2</sup>	1.54	0.0900	1.54	0.0900
	<u>ULSD</u>			
<b>ULSD **</b>	<u>¢/MBTU</u>	<u>\$/BBL</u>		
Tax <sup>1</sup>	89.21	5.1123		
Ocean Transportation	0.00	0.0000		
Storage	0.00	0.0000		
Wharfage	0.00	0.0000		
Fees <sup>2</sup>	1.57	0.0900		

<sup>1</sup> Tax includes HGET, Hawaii Use Tax, Liquid Fuel Tax, LUST Tax and Environmental Response Tax.

Federal Oil Spill Recovery Fee reinstated as of January 2020.

HGET rate changed to 4.7120% in 2020.

<sup>2</sup> With the change in supplier to PAR some fees have been taken off the pricing sheet.

inventory, contract prices for the current month are being provided.

Contract prices are considered accurate pending actual delivery of fuel.

\* Land Transportation Costs are shown in Attachment 3, Sheet 1.

\*\* ULSD includes Waimea, Kanoelehua, and Keahole.

Reference: Decision and Order No. 16134, Docket No. 96-0040.

**Hawaii Electric Light Company, Inc.**  
PURCHASED POWER PRICES FOR April 1, 2020

		<u>April 1, 2020</u> <u>(¢/kWh)</u>	<u>Floor Rates</u> <u>(¢/kWh)</u>
PGV (25 MW)	- on peak	14.022	6.560
PGV (22 MW)	- off peak	12.678	5.430
WAILUKU HYDRO	- on peak	14.022	7.240
	off peak	12.678	5.970
Other: (<100 KW)	Sch Q Rate	13.110	
		<u>April 1, 2020</u> <u>(¢/kWh)</u>	<u>Floor Rates</u> <u>(¢/kWh)</u>
HEP		11.430	
PGV Addtl 5 MW	- on peak	13.250	0.0000
	- off peak	13.250	0.0000
PGV Addtl 8 MW	- on peak	10.100	0.0000
	- off peak	6.740	0.0000



**Hawaii Electric Light Company, Inc.**  
**Energy Cost Reconciliation Adjustment**  
April 1, 2020

<u>Line No.</u>	<u>Description</u>	<u>Amount</u>
1	Amount to be (returned) or collected	(\$141,300)
2	Monthly Amount ( $\frac{1}{3}$ x Line 1)	(\$47,100)
3	Revenue Tax Divisor	0.91115
4	Total (Line 2 / Line 3)	(\$51,693)
5	Estimated MWh Sales (April 1, 2020)	83,210 mwh
6	Adjustment (Line 4 / Line 5)	(0.062) ¢/kwh

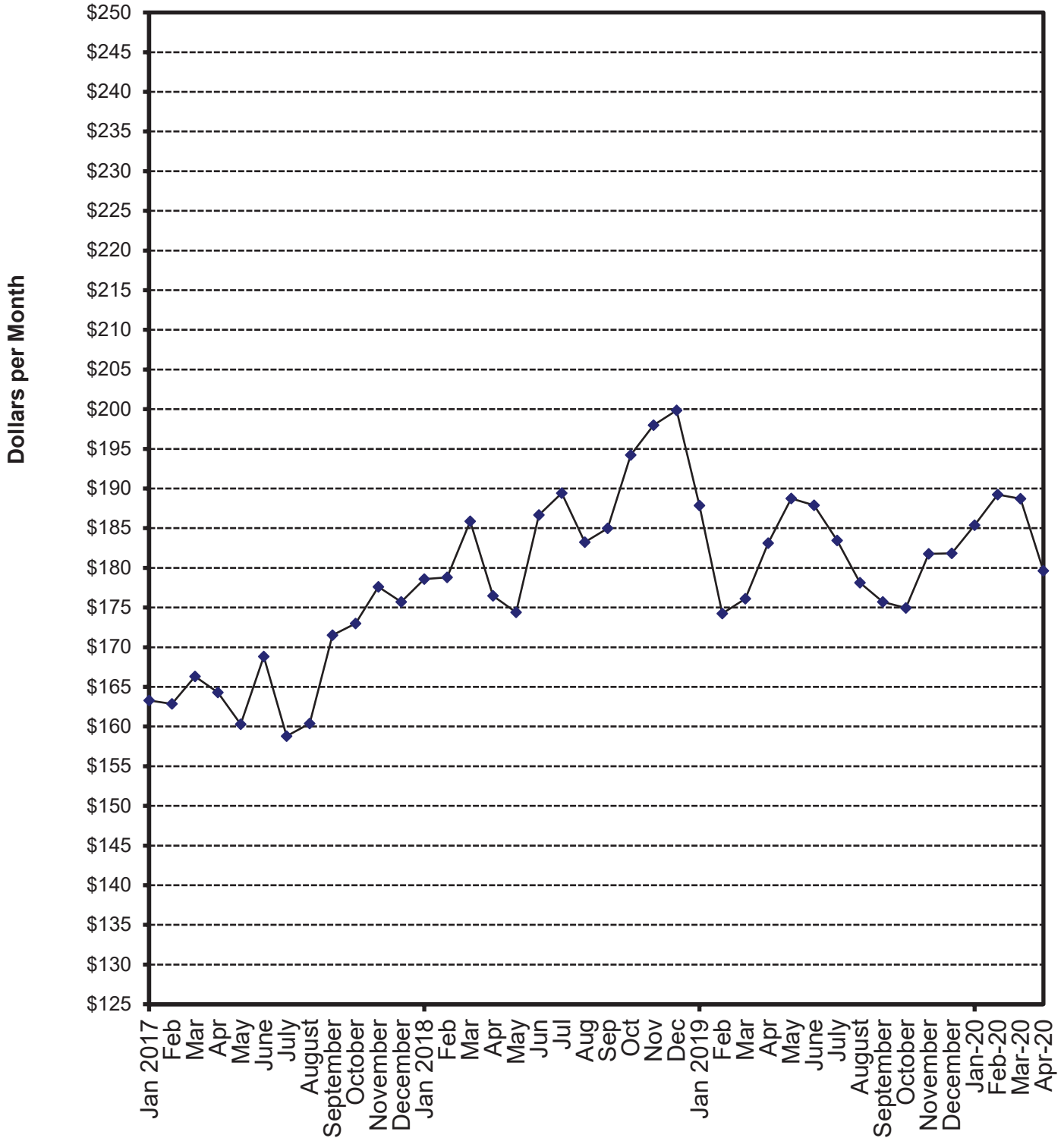
**HAWAII ELECTRIC LIGHT COMPANY, INC.**  
2020 Cumulative Reconciliation Balance

<u>Month</u>	(1) <u>YTD FOA Reconciliation</u>	<u>Qtr</u>	(2) <u>FOA Rec Adjust Variance</u>	(3) <u>FOA Rec Less Variance</u>	(4) <u>Try to Collect</u>	(5) <u>Actual Collect</u>	(6) <u>Month-end Cumulative Balance</u>
January 19					(305,667)	(300,243)	32,773
February	2,598,900	[4]	(8,054)	2,606,954	(866,300)	(800,636)	1,839,091
March					(866,300)	(825,091)	1,014,000
April					(866,300)	(829,484)	184,516
May	1,745,900	(1)	112,297	1,633,603	(581,967)	(565,304)	1,252,815
June					(581,967)	(585,631)	667,184
July					(581,967)	(586,240)	80,944
August	3,027,900	[2]	49,815	2,978,085	(1,009,300)	(1,025,775)	2,033,254
September					(1,009,300)	(1,026,151)	1,007,103
October					(1,009,300)	(1,007,209)	(106)
November	1,927,900	[3]	(37,599)	1,965,499	(642,633)	(651,308)	1,314,085
December 19					(642,633)	(646,001)	668,084
January 20					(642,633)	(673,144)	(5,060)
February	141,300	[4]	(9,952)	151,252	(47,100)	(45,511)	100,681
March					(47,100)		
April					(47,100)		

NOTES:

- Col(1): Quarterly FOA reconciliation amounts. (Refer to Attachment 6)  
A positive number is an over-collection. A negative number is an under-collection.
- Col(2): FOA reconciliation adjustment variance accumulated during the last three months, starting with the fourth prior month; the difference between the estimated recorded sales used to derive the \$/kwh adjustment and the actual recorded sales.  
(Col(5)-Col(4))
- Col(3): FOA reconciliation generated in the current quarter. The YTD FOA reconciliation difference minus the adjustment variance. Col(1)-Col(2)
- Col(4): Amount that the FOA reconciliation adjustment is trying to collect. (Col(1) \* 1/3)
- Col(5): Actual collected amount. (recorded sales \* \$/kwh adjustment/1.09751)
- Col(6): Cumulative balance of the FOA reconciliation (Previous balance + Col(3) + Col(5))

## Hawaii Electric Light Company, Inc. Residential Bill at 500 KWH/Month Consumption



**HAWAII ELECTRIC LIGHT COMPANY, INC.  
FUEL OIL ADJUSTMENT FACTOR DATA**

<u>EFFECTIVE DATE</u>	<u>FUEL FACTOR</u> <u>CENTS / KWH</u>		
	<u>RESIDENTIAL &amp; COMMERCIAL</u>	<u>RESIDENTIAL BILL (\$)</u> <u>@ 500 KWH</u>	<u>@ 600 KWH</u>
January 1, 2017	-2.842	163.27	195.58
February 1, 2017	-2.956	162.87	195.09
March 1, 2017	-2.274	166.31	199.24
April 1, 2017	-2.425	164.31	196.83
May 1, 2017	-3.035	160.30	192.02
June 1, 2017	-1.343	168.82	202.25
July 1, 2017	-3.220	158.79	190.22
August 1, 2017	-3.643	160.39	192.15
September 1, 2017	-2.447	171.52	205.50
October 1, 2017	-2.131	172.97	207.23
November 1, 2017	-0.885	177.60	212.80
December 1, 2017	-1.405	175.02	209.69
January 1, 2018	-0.723	178.59	213.95
February 1, 2018	-0.579	178.81	214.22
March 1, 2018	0.816	185.87	222.68
April 1, 2018	-0.912	176.46	211.39
May 1, 2018	-0.452	174.38	208.90
June 1, 2018	2.301	186.65	223.63
July 1, 2018	2.831	189.43	226.97
August 1, 2018	1.665	183.25	219.55
September 1, 2018	2.027	184.98	221.62
October 1, 2018	8.359	194.21	232.50
November 1, 2018	8.913	197.99	237.04
December 1, 2018	9.292	199.86	239.29
January 1, 2019	6.867	187.86	224.86
February 1, 2019	14.631	174.25	208.53
March 1, 2019	14.976	176.1	210.75
April 1, 2019	16.469	183.12	219.17
May 1, 2019	17.396	188.74	225.93
June 1, 2019	17.318	187.89	224.90
July 1, 2019	16.450	183.46	219.63
August 1, 2019	15.331	178.14	213.25
September 1, 2019	14.845	175.70	210.32
October 1, 2019	14.692	174.93	209.40
November 1, 2019	16.302	181.76	217.59
December 1, 2019	16.288	181.82	217.67
January 1, 2020	16.768	185.37	221.88
February 1, 2020	17.547	189.22	226.49
March 1, 2020	17.424	188.72	225.90
April 1, 2020	15.644	179.61	214.96

**HAWAII ELECTRIC LIGHT COMPANY, INC.  
RESIDENTIAL SURCHARGE DATA**

EFFECTIVE DATE	DESCRIPTION OF SURCHARGE	RATE
1/1/2018 - 1/31/18	PURCHASED POWER ADJUSTMENT CLAUSE	2.4105 CENTS/KWH
1/1/18-6/30/18	GREEN INFRASTRUCTURE FEE	1.3400 DOLLARS/MONTH
2/1/18-2/28/18	PURCHASED POWER ADJUSTMENT CLAUSE	2.3101 CENTS/KWH
3/1/18 - 3/31/18	PURCHASED POWER ADJUSTMENT CLAUSE	2.3258 CENTS/KWH
04/1/18-04/30/18	PURCHASED POWER ADJUSTMENT CLAUSE	2.3184 CENTS/KWH
04/1/18-04/30/18	SOLARSAVER ADJUSTMENT	-0.1464 CENTS/KWH
05/1/18-05/31/18	PURCHASED POWER ADJUSTMENT CLAUSE	2.3395 CENTS/KWH
05/1/18-05/31/18	SOLARSAVER ADJUSTMENT	0.0000 CENTS/KWH
5/1/2018	INTERIM RATE INCREASE 2016	2.5000 PERCENT ON BASE
06/01/18-06/30/18	PURCHASED POWER ADJUSTMENT CLAUSE	1.6729 CENTS/KWH
6/1/2018	RBA RATE ADJUSTMENT	1.0006 CENTS/KWH
07/01/18-07/31/18	PURCHASED POWER ADJUSTMENT CLAUSE	1.6811 CENTS/KWH
7/1/2018- 12/31/18	GREEN INFRASTRUCTURE FEE	1.2100 DOLLARS/MONTH
7/1/2018	RESIDENTIAL PBF SURCHARGE ADJUSTMENT	0.4658 CENTS/KWH
08/01/18-08/31/18	PURCHASED POWER ADJUSTMENT CLAUSE	1.6110 CENTS/KWH
09/01/18-09/30/18	PURCHASED POWER ADJUSTMENT CLAUSE	1.5950 CENTS/KWH
10/01/18-10/31/18	PURCHASED POWER ADJUSTMENT CLAUSE	1.8602 CENTS/KWH
10/1/2018	INTERIM RATE INCREASE 2016	0.0000 PERCENT ON BASE
10/1/2018	FINAL RATE INCREASE (TY 2016) 0.53% EFFECTIVE 10/01/18, DOCKET NO. 2015-0170	
11/1/2018-11/30/18	PURCHASED POWER ADJUSTMENT CLAUSE	2.0617 CENTS/KWH
12/1/2018-12/31/18	PURCHASED POWER ADJUSTMENT CLAUSE	2.0577 CENTS/KWH
1/1/2019-1/31/19	PURCHASED POWER ADJUSTMENT CLAUSE	2.0548 CENTS/KWH
1/1/2019- 06/30/19	GREEN INFRASTRUCTURE FEE	1.3500 DOLLARS/MONTH
2/1/2019-2/28/19	PURCHASED POWER ADJUSTMENT CLAUSE	1.8113 CENTS/KWH
3/1/2019-3/31/19	PURCHASED POWER ADJUSTMENT CLAUSE	1.8372 CENTS/KWH
04/1/2019-4/30/19	PURCHASED POWER ADJUSTMENT CLAUSE	1.8247 CENTS/KWH
04/1/19-04/30/19	SOLARSAVER ADJUSTMENT	-0.0768 CENTS/KWH
05/01/2019-5/31/19	PURCHASED POWER ADJUSTMENT CLAUSE	1.9460 CENTS/KWH
05/01/2019- 03/31/2020	SOLARSAVER ADJUSTMENT	0.0000 CENTS/KWH
06/01/2019-6/30/19	PURCHASED POWER ADJUSTMENT CLAUSE	1.9474 CENTS/KWH
6/1/2019-12/31/2019	RBA RATE ADJUSTMENT	0.9069 CENTS/KWH
7/01/2019-7/31/19	PURCHASED POWER ADJUSTMENT CLAUSE	1.9539 CENTS/KWH
7/1/2019-12/31/2019	GREEN INFRASTRUCTURE FEE	1.1700 DOLLARS/MONTH
7/1/2019-12/31/2019	RESIDENTIAL PBF SURCHARGE ADJUSTMENT	0.4775 CENTS/KWH
8/1/2019-8/31/2019	PURCHASED POWER ADJUSTMENT CLAUSE	2.0075 CENTS/KWH
9/1/2019-9/30/2019	PURCHASED POWER ADJUSTMENT CLAUSE	2.0060 CENTS/KWH
10/1/2019-10/31/2019	PURCHASED POWER ADJUSTMENT CLAUSE	2.0069 CENTS/KWH
11/1/2019-11/30/2019	PURCHASED POWER ADJUSTMENT CLAUSE	1.7616 CENTS/KWH
12/1/2019-12/31/2019	PURCHASED POWER ADJUSTMENT CLAUSE	1.7884 CENTS/KWH
1/1/2020-1/31/2020	PURCHASED POWER ADJUSTMENT CLAUSE	1.7730 CENTS/KWH
<b>1/1/2020</b>	<b>GREEN INFRASTRUCTURE FEE</b>	<b>1.2500 DOLLARS/MONTH</b>
<b>1/1/2020</b>	<b>RBA RATE ADJUSTMENT</b>	<b>0.1852 CENTS/KWH</b>
<b>1/1/2020</b>	<b>INTERIM RATE ADJUSTMENT 2019</b>	<b>4.0900 PERCENT ON BASE</b>
<b>1/1/2020</b>	<b>RESIDENTIAL PBF SURCHARGE ADJUSTMENT</b>	<b>0.7437 CENTS/KWH</b>
2/1/2020- 2/29/2020	PURCHASED POWER ADJUSTMENT CLAUSE	1.7631 CENTS/KWH
3/1/2020- 3/31/2020	PURCHASED POWER ADJUSTMENT CLAUSE	1.7883 CENTS/KWH
<b>4/1/2020- 4/30/2020</b>	<b>PURCHASED POWER ADJUSTMENT CLAUSE</b>	<b>1.7717 CENTS/KWH</b>
<b>4/1/2020</b>	<b>SOLARSAVER ADJUSTMENT</b>	<b>-0.0267 CENTS/KWH</b>

\*\*Base charges include customer charge, demand charge, energy charge, power factor adjustment, voltage discount, and minimum charge.

## Calculations of the Average Residential Customer Bill

	Rate		Charge (\$) at 500 Kwh			
	3/01/20	4/01/20	3/01/20	4/01/20	Difference	
<b>Base Rates</b>	effective date:	2/1/2019	2/1/2019			
Base Fuel Energy Charge	¢/kwh	-	-	\$0.00	\$0.00	\$0.00
Non-Fuel Energy Charge	¢/kwh			\$71.85	\$71.85	\$0.00
First 300 kWh per month	¢/kwh	13.0289	13.0289	\$39.09	\$39.09	\$0.00
Next 700 kWh per month	¢/kwh	16.3807	16.3807	\$32.76	\$32.76	\$0.00
Customer Charge	\$	11.50	11.50	\$11.50	\$11.50	\$0.00
<b>Total Base Charges</b>				\$83.35	\$83.35	\$0.00
<b>Interim Rate Adjustment 2019 TY</b>	% on base	4.0900%	4.0900%	\$3.41	\$3.41	\$0.00
<b>RBA Rate Adjustment</b>	¢/kwh	0.1852	0.1852	\$0.93	\$0.93	\$0.00
<b>Purchased Power Adj. Clause</b>	¢/kwh	1.7883	1.7717	\$8.94	\$8.86	-\$0.08
<b>PBF Surcharge</b>	¢/kwh	0.7437	0.7437	\$3.72	\$3.72	\$0.00
<b>DSM Adjustment</b>	¢/kwh	0.0000	0.0000	\$0.00	\$0.00	\$0.00
<b>SolarSaver Adjustment</b>	¢/kwh	0.0000	(0.0267)	\$0.00	-\$0.13	-\$0.13
<b>Energy Cost Recovery</b>	¢/kwh	17.4240	15.6440	\$87.12	\$78.22	-\$8.90
<b>Green Infrastructure Fee</b>	\$	1.2500	1.2500	\$1.25	\$1.25	\$0.00
<b>Avg Residential Bill at 500 kwh</b>				\$188.72	\$179.61	
				Increase (Decrease -)		-\$9.11
				% Change		-4.83%

	Rate		Charge (\$) at 600 Kwh			
	3/01/20	4/01/20	3/01/20	4/01/20	Difference	
<b>Base Rates</b>	effective date:	2/1/2019	2/1/2019			
Base Fuel/Energy Charge	¢/kwh	-	-	\$0.00	\$0.00	\$0.00
Non-Fuel Energy Charge	¢/kwh			\$88.23	\$88.23	\$0.00
First 300 kWh per month	¢/kwh	13.0289	13.0289	\$39.09	\$39.09	\$0.00
Next 700 kWh per month	¢/kwh	16.3807	16.3807	\$49.14	\$49.14	\$0.00
Customer Charge	\$	11.50	11.50	\$11.50	\$11.50	\$0.00
<b>Total Base Charges</b>				\$99.73	\$99.73	\$0.00
<b>Interim Rate Adjustment 2019 TY</b>	% on base	4.0900%	4.0900%	\$4.08	\$4.08	\$0.00
<b>RBA Rate Adjustment</b>	¢/kwh	0.1852	0.1852	\$1.11	\$1.11	\$0.00
<b>Purchased Power Adj. Clause</b>	¢/kwh	1.7883	1.7717	\$10.73	\$10.63	-\$0.10
<b>PBF Surcharge</b>	¢/kwh	0.7437	0.7437	\$4.46	\$4.46	\$0.00
<b>DSM Adjustment</b>	¢/kwh	0.0000	0.0000	\$0.00	\$0.00	\$0.00
<b>SolarSaver Adjustment</b>	¢/kwh	0.0000	(0.0267)	\$0.00	-\$0.16	-\$0.16
<b>Energy Cost Recovery</b>	¢/kwh	17.4240	15.6440	\$104.54	\$93.86	-\$10.68
<b>Green Infrastructure Fee</b>	\$	1.2500	1.2500	\$1.25	\$1.25	\$0.00
<b>Avg Residential Bill at 600 kwh</b>				\$225.90	\$214.96	
				Increase (Decrease -)		-\$10.94
				% Change		-4.84%

---

**From:** puc@hawaii.gov  
**Sent:** Friday, March 27, 2020 1:25 PM  
**To:** Oya, Tyler  
**Subject:** Hawaii PUC eFiling Confirmation of Filing

[This email is coming from an EXTERNAL source. Please use caution when opening attachments or links in suspicious email.]

Your eFile document has been filed with the Hawaii Public Utilities commission on 2020 Mar 27 PM 13:21. The mere fact of filing shall not waive any failure to comply with Hawaii Administrative Rules Chapter 6-61, Rules of Practice and Procedure Before the Public Utilities Commission, or any other application requirements. Your confirmation number is TYLE20132146650. If you have received this email in error please notify the Hawaii Public Utilities Commission by phone at 808 586-2020 or email at hawaii.puc@hawaii.gov.