



April 28, 2020

The Honorable Chair and Members
of the Hawai'i Public Utilities Commission
Kekuanao'a Building, First Floor
465 South King Street
Honolulu, Hawai'i 96813

Dear Commissioners:

Subject: Hawai'i Electric Light Energy Cost Recovery Factor for May 2020

Hawai'i Electric Light Company, Inc.'s ("Hawai'i Electric Light") Energy Cost Recovery factor for May 2020 is 11.215 cents per kilowatt-hour ("kWh"), a decrease of 4.43 cents per kWh from last month. A residential customer consuming 500 kWh of electricity will be paying \$157.94, a decrease of \$21.67 compared to rates effective April 1, 2020. The decrease in the residential bill is due to the decrease in the Energy Cost Recovery Factor (-\$22.14), partially offset by the increase in the Purchased Power Adjustment Clause (+\$0.34), and termination of the SolarSaver credit (+\$0.13).

Hawai'i Electric Light's fuel composite cost of generation decreased 302.31 cents per million BTU to 971.62 cents per million BTU. The composite cost of distributed generation remains at 0 cents per kWh. The composite cost of purchased energy decreased 1.99 cents per kWh to 10.234 cents per kWh.

The attached sheets set forth the energy cost recovery factor in cents per kWh for each rate schedule that is applicable for pro rata use beginning May 1, 2020.

Sincerely,

/s/ Sharon M. Suzuki

Sharon M. Suzuki

President

Maui County and Hawai'i Island Utilities

Attachments

cc: Division of Consumer Advocacy

HAWAII ELECTRIC LIGHT COMPANY, INC.

ENERGY COST RECOVERY FACTOR

	<u>EFFECTIVE DATES</u>		
	<u>4/01/20</u>	<u>5/01/20</u>	<u>Change</u>
<u>Composite Cost</u>			
Generation, ¢/mmbtu	1,273.93	971.62	(302.31)
Dispersed Generation Energy, ¢/kWh	0.000	0.000	0.00
Purchased Energy, ¢/kWh	12.228	10.234	(1.99)
<u>Residential Schedule "R"</u>			
Energy Cost Recovery - ¢/kWh	15.644	11.215	(4.43)
<u>Others - "G,J,P,F"</u>			
Energy Cost Recovery - ¢/kWh	15.644	11.215	(4.43)
Residential Customer with:			
500 KWH Consumption - \$/Bill	\$179.61	\$157.94	(\$21.67)
600 KWH Consumption - \$/Bill	\$214.96	\$188.96	(\$26.00)

HAWAII ELECTRIC LIGHT COMPANY, INC.
ENERGY COST RECOVERY (ECR) FILING

ENERGY COST RECOVERY (ECR) FILING - May 1, 2020 (Page 1 of 2)

Line

1 Effective Date May 1, 2020
2 Supercedes Factors of April 1, 2020

GENERATION COMPONENT

<u>CENTRAL STATION WITH WIND/HYDRO COMPONENT</u>			
FUEL PRICES, ¢/mmbtu			
3			
4	Hill Industrial		824.86
5	Puna Industrial		840.87
6	Keahole Diesel		1,067.95
6a	Keahole ULSD		1,646.05
7	Waimea ULSD Diesel		1,631.00
8	Hilo Diesel		1,034.80
8a	Hilo (Kanoelehua) ULSD Diesel ¹		1,599.53
9	Puna Diesel		1,037.18
10	Wind		0.00
11	Hydro		0.00
BTU MIX, %			
12			
13	Hill Industrial		27.784
14	Puna Industrial		11.325
15	Keahole Diesel		51.614
15a	Keahole ULSD		0.179
16	Waimea ULSD Diesel		0.000
17	Hilo Diesel		1.319
17a	Hilo (Kanoelehua) ULSD Diesel ¹		0.000
18	Puna Diesel		7.656
19	Wind		0.000
20	Hydro		0.123
			100.000
21	COMPOSITE COST OF GENERATION, CENTRAL STATION + WIND/HYDRO ¢/mmbtu		971.62
22	% Input to System kWh Mix		52.748
EFFICIENCY FACTOR, mmbtu/kWh			
	(A)	(B)	(C)
			(D)
			Percent of
			Centrl Stn +
			Wind/Hydro
			Weighted
	Fuel Type	Eff Factor	Eff Factor
		mmbtu/kwh	
23	Industrial	0.014389	39.109
24	Diesel	0.010580	60.768
25	Other	0.011999	0.1230
			0.000015
			100.0000
(Lines 23, 24, 25): Col(B) x Col(C) = Col(D)			
26	Weighted Efficiency Factor, mmbtu/kWh [Lines 23(D) + 24(D) + 25(D)]		0.0120710
27	WEIGHTED COMPOSITE CENTRAL STATION + WIND/HYDRO GENERATION COST, ¢/kWh (Lines (21 x 22 x 26))		6.18651
28	BASE CENTRAL STATION + WIND/HYDRO GENERATION COST, ¢/mmbtu		0.00
29	Base % Input to Sys kWh Mix		0.00
30	Efficiency Factor, mmbtu/kwh		0.000000
31	WEIGHTED BASE CENTRAL STATION + WIND/HYDRO GENERATION COST ¢/kWh (Lines (28 x 29 x 30))		0.00000
32	COST LESS BASE (Line 27 - 31)		6.18651
33	Revenue Tax Req Multiplier		1.0975
34	CENTRAL STATION + WIND/HYDRO GENERATION FACTOR, ¢/kWh (Line (32 x 33))		6.78969

<u>DG ENERGY COMPONENT</u>		
35	COMPOSITE COST OF DG ENERGY, ¢/kWh	0.000
36	% Input to System kWh Mix	0.000
37	WEIGHTED COMPOSITE DG ENERGY COST, ¢/kWh (Lines 35 x 36)	0.00000
38	BASE DG ENERGY COMPOSITE COST	0.000
39	Base % Input to System kWh Mix	0.00
40	WEIGHTED BASE DG ENERGY COST, ¢/kWh (Line 38 x 39)	0.00000
41	Cost Less Base (Line 37 - 40)	0.00000
42	Loss Factor	1.072
43	Revenue Tax Req Multiplier	1.0975
44	DG FACTOR, ¢/kWh (Line 41 x 42 x 43)	0.00000

SUMMARY OF TOTAL GENERATION FACTOR, ¢/kWh		
45	Cntrl Stn+Wind/Hydro (line 34)	6.78969
46	DG (line 44)	0.00000
47	TOTAL GENERATION FACTOR, ¢/kWh (lines 45 + 46)	6.78969

¹ Hilo ULSD same location as Kanoelehua ULSD

HAWAII ELECTRIC LIGHT COMPANY, INC.
ENERGY COST RECOVERY (ECR) FILING

ENERGY COST RECOVERY (ECR) FILING - May 1, 2020 (Page 2 of 2)

Line	<u>PURCHASED ENERGY COMPONENT</u>				
	PURCHASED ENERGY PRICE, ¢/kWh -- Fossil				
48	HEP		9.106		
	PURCHASED ENERGY PRICE, ¢/kWh -- Renewable				
49	PGV	On Peak	11.033		
50	PGV	Off Peak	9.779		
51	PGV - Add'l 5 MW	On Peak	13.250		
52	PGV - Add'l 5 MW	Off Peak	13.250		
53	PGV - Add'l 8 MW	On Peak	10.100		
54	PGV - Add'l 8 MW	Off Peak	6.740		
55	Wailuku Hydro	On Peak	11.033		
56	Wailuku Hydro	Off Peak	9.779		
57	Hawi Renewable Dev.	On Peak	11.033		
58	Hawi Renewable Dev.	Off Peak	9.779		
59	Tawhiri (Pakini Nui)	On Peak	13.070		
60	Tawhiri (Pakini Nui)	Off Peak	12.820		
61	HEP Biodiesel		9.106		
62	Small Hydro (>100 KW)	On Peak	11.033		
63	Small Hydro (>100 KW)	Off Peak	9.779		
64	Sch Q Hydro (<100 KW)		10.180		
65	FIT		23.800		
	PURCHASED ENERGY KWH MIX, %, Fossil				
66	HEP, Fossil		58.132		
	PURCHASED ENERGY KWH MIX, %, Renewable				
67	PGV	On Peak	0.000		
68	PGV	Off Peak	0.000		
69	PGV - Add'l	On Peak	0.000		
70	PGV - Add'l	Off Peak	0.000		
71	PGV - Add'l 8 MW	On Peak	0.000		
72	PGV - Add'l 8 MW	Off Peak	0.000		
73	Wailuku Hydro	On Peak	3.719		
74	Wailuku Hydro	Off Peak	2.646		
75	Hawi Renewable Dev.	On Peak	4.918		
76	Hawi Renewable Dev.	Off Peak	2.159		
77	Tawhiri (Pakini Nui)	On Peak	12.811		
78	Tawhiri (Pakini Nui)	Off Peak	7.786		
79	HEP Biodiesel		6.932		
80	Small Hydro (>100 KW)	On Peak	0.000		
81	Small Hydro (>100 KW)	Off Peak	0.000		
82	Sch Q Hydro (<100 KW)		0.000		
83	FIT		0.897		
			100.000		
83a	Comp. Cost Purchased Energy Fossil, ¢/kWh		9.1060		
83b	Comp. Cost Purchased Energy Renewable, ¢/kWh		11.7991		
84	COMPOSITE COST OF PURCHASED ENERGY, ¢/kWh		10.234		
85	% Input to System kWh Mix		47.252		
86	WEIGHTED COMPOSITE PURCHASED ENERGY COST, ¢/kWh (Lines (84 x 85))		4.83577		
87	BASE PURCHASED ENERGY COMPOSITE COST, ¢/kWh		0.000		
88	Base % Input to Sys kWh Mix		0.00		
89	WEIGHTED BASE PURCHASED ENERGY COST, ¢/kWh (Lines (87 x 88))		0.00000		
90	COST LESS BASE (Lines (86 - 89))		4.83577		
91	Loss Factor		1.072		
92	Revenue Tax *		1.0975		
93	PURCHASED ENERGY FACTOR, ¢/kWh (Lines (90 x 91 x 92))		5.68938		
	Derivation of Non-Adjustable Component:				
	93A	Ocean Cargo Insurance Exp, \$000		\$13.1	
		HELCO-603, page 1, line 4			
	93B	Revenue Tax Adjustment		1.097514	
	93C	Non-Adj Revenues, \$000		\$14.4	
	93D	2019 TY Sales, MWh		1,061,718	
		HELCO-301			
	93E	Non-Adj Revenues, ¢/kWh		0.00135	
	<u>Line</u>	<u>SYSTEM COMPOSITE</u>			
	94	GENERATION AND PURCHASED ENERGY FACTOR, ¢/kWh (Lines (47 + 93))	12.47907		
	95	Not Used	0.000		
	96	Non-Adjustable Component	0.00135		
	97	ECA Reconciliation Adjustment	(1.265)		
	98	ECA FACTOR, ¢/kWh (Lines (94 + 95+ 96 + 97))	11.215		

Hawaii Electric Light Company, Inc.
FUEL OIL INVENTORY PRICES FOR May 1, 2020

INDUSTRIAL FUEL COSTS:

	<u>HILO</u>	<u>PUNA</u>
Average Industrial Fuel Cost - \$/BBL	51.9659	51.9659
Land Transportation Cost - \$/BBL	--	1.0088
Industrial Costs For Filing - \$/BBL	51.9659	52.9747
Conversion Factors - mmbtu/BBL	6.30	6.30
Industrial Costs For Filing - ¢/mmbtu	824.86	840.87

DIESEL FUEL COSTS:

	<u>KEAHOLE</u>	<u>PUNA CT-3</u>	<u>HILO</u>
Average Diesel Fuel Cost - \$/BBL	59.4791	59.4791	59.4791
Land Transportation Cost - \$/BBL	3.1028	1.2999	1.1604
Diesel Costs For Filing - \$/BBL	62.5819	60.7790	60.6395
Conversion Factors - mmbtu/BBL	5.86	5.86	5.86
Diesel Costs For Filing - ¢/mmbtu	1,067.95	1,037.18	1,034.80

ULSD FUEL COSTS:

	<u>KEAHOLE</u>	<u>WAIMEA</u>	<u>HILO</u>	<u>DISPERSED GENERATION</u>
Average ULSD Fuel Cost - \$/BBL	90.6191	90.6191	90.6191	90.6191
Land Transportation Cost - \$/BBL	3.6997	2.8372	1.0340	-
ULSD Costs For Filing - \$/BBL	94.3188	93.4563	91.6531	90.6191
Conversion Factors - mmbtu/BBL	5.73	5.73	5.73	5.73
ULSD Costs For Filing - ¢/mmbtu	1,646.05	1,631.00	1,599.53	1,581.49

Dispersed Generation, cents per kWh

	<u>COMPOSITE COST OF DISP. GEN.</u>
BBIs Fuel:	0.0000
\$/BBI Inv Cost:	90.6191
Fuel \$ (Prod Sim Consumption x Unit Cost)	0.00
Net kWh (from Prod Sim)	0
cents/kWh:	#DIV/0!

HAWAII ELECTRIC LIGHT CO., INC.
Estimated Weighted Average
April 2020

	SHIPMAN INDUSTRIAL		HILL INDUSTRIAL		COST PER BARREL		
	BBL	COST	BBL	COST	EXCL LT	LT Total	
Balance at 03/31/2020	0	0.00	35,517	2,380,158.24			
Less: Est'd Inventory Addn			0	0.00			
Purchases: Estimate	xxxxxx	xxxxxxxxxxxxxxxxxxxx	xxxxxxxxxx	xxxxxxxxxxxxxxxxxxxx			
Actual	xxxxxx	xxxxxxxxxxxxxxxxxxxx	xxxxxxxxxx	xxxxxxxxxxxxxxxxxxxx			
Transfers out: Estimate	xxxxxx	xxxxxxxxxxxxxxxxxxxx	xxxxxxxxxx	xxxxxxxxxxxxxxxxxxxx			
Actual	xxxxxx	xxxxxxxxxxxxxxxxxxxx	xxxxxxxxxx	xxxxxxxxxxxxxxxxxxxx			
Transfers in: Estimate	0	0.00	(31,175)	(2,101,977.24)			
Actual	0	0.00	30,962	2,104,630.18			
Consumed: Estimate	0	0.00	31,698	2,134,833.20			
Actual	0	0.00	(29,894)	(2,013,335.34)			
Balance Per G/L 03/31/2020	0	0.00	37,108	2,504,309.04			
Purchases	xxxxxx	xxxxxxxxxxxxxxxxxxxx	xxxxxxxxxx	xxxxxxxxxxxxxxxxxxxx			
Transfer out	xxxxxx	xxxxxxxxxxxxxxxxxxxx	xxxxxxxxxx	xxxxxxxxxxxxxxxxxxxx			
Transfer in	0	0.00	31,662	1,698,049.95			
Consumed	0	0.00	(25,218)	(1,686,421.02)	106.5901	0.0000	106.5901
Balance @ 04/30/2020	0	0.00	43,552	2,515,937.97			
Inv From Offsite/Transfers	0	0.00	0	0.00			
Est'd Inventory Addition	0	0.00	0	0.00			
Fuel Balance @ 04/30/2020	0	0.00	43,552	2,515,937.97			
Reverse Fuel Balance	xxxxxx	0.00	xxxxxx	(2,515,937.97)			
Fuel Bal @ Avg Price	xxxxxx	0.00	xxxxxx	2,263,219.17			
Total @ 05/01/2020 Avg Price	0	0.00	43,552	2,263,219.17			

Weighted Avg Cost/BBL by Location #DIV/0! 57.7686

Weighted Avg Cost/BBL @ Avg Cost #DIV/0! 51.9659

HAWAII ELECTRIC LIGHT CO., INC.
Estimated Weighted Average
April 2020

PUNA INDUSTRIAL

	BBL	COST	LAND TRANSP	COST PER BARREL		TOTAL
				EXCLUDE LT	LT	
Balance at 03/31/2020	8,749	574,952.46	12,471.54			
Less: Est'd Inventory Addition	0	0.00	0.00			
Purchases: Estimate	XXXXXXXXXXXX	XXXXXXXXXXXXXXXX	XXXXXXXXXXXXXXXXXXXX			
Actual	XXXXXXXXXXXX	XXXXXXXXXXXXXXXX	XXXXXXXXXXXXXXXXXXXX			
Transfers out: Estimate	XXXXXXXXXXXX	XXXXXXXXXXXXXXXX	XXXXXXXXXXXXXXXXXXXX			
Actual	XXXXXXXXXXXX	XXXXXXXXXXXXXXXX	XXXXXXXXXXXXXXXXXXXX			
Transfers in: Estimate	(2,926)	(186,307.42)	(3,848.60)			
Actual	2,854	186,743.22	3,648.67			
Consumed: Estimate	3,103	208,984.40	4,816.66			
Actual	<u>(4,428)</u>	<u>(298,222.01)</u>	<u>(9,362.44)</u>			
Balance Per G/L 03/31/2020	<u>7,352</u>	<u>486,150.64</u>	<u>7,725.83</u>			
Purchases	XXXXXXXXXXXX	XXXXXXXXXXXXXXXX	XXXXXXXXXXXXXXXXXXXX			
Transfer out	XXXXXXXXXXXX	XXXXXXXXXXXXXXXX	XXXXXXXXXXXXXXXXXXXX			
Transfer in	6,510	326,697	8,562.67			
Consumed	(5,531)	<u>(369,878.45)</u>	(7,884.34)	66.8737	1.4255	68.2992
Balance @ 04/30/2020	<u>8,331</u>	<u>442,968.74</u>	<u>8,404.16</u>			
Inventory From Offsite/Transfers	0	0.00	0.00			
Est'd Inventory Addition	0	0.00	0.00			
Fuel Bal @ Avg Price	<u>8,331</u>	<u>442,968.74</u>	<u>8,404.16</u>		<u>1.0088</u>	
Reverse Fuel Balance	XXXXXXXXXXXX	(442,968.74)	XXXXXXXXXXXXXXXXXXXX			
Fuel Balance @ Avg Price	XXXXXXXXXXXX	432,927.97	XXXXXXXXXXXXXXXXXXXX			
Total @ 05/01/2020 Avg Price	<u>8,331</u>	<u>432,927.97</u>	<u>8,404.16</u>			
Weighted Avg Cost/BBL by Location		53.1711	1.0088			
Weighted Avg Cost/BBL @ Avg Cost		51.9659	1.0088			

HAWAII ELECTRIC LIGHT CO., INC.
Estimated Weighted Average
April 2020

KEAHOLE DIESEL

HS Diesel	BBL	GALLONS	COST EXCLUDE LT	LAND TRANSP	COST PER EXCLUD LT	BARREL LT	TOTAL
Balance at 03/31/2020	41,224.9	1,731,445.0	3,265,798.3	131,262.8			
Less: Est'd Inventory Addition	0.0	0.0	0.0	0.0			
Purchases: Estimate	(189.0)	(7,938.0)	(15,424.0)	0.0			
Actual	1,513.6	63,571.0	123,522.6	0.0			
Transfers out: Estimate		xxxxxxxxxxxxxxxx	xxxxxxxxxxxxxxxx	xxxxxxxxxxxxxxxx			
Actual		xxxxxxxxxxxxxxxx	xxxxxxxxxxxxxxxx	xxxxxxxxxxxxxxxx			
Transfers in: Estimate	(59,698.7)	(2,507,344.0)	(4,928,640.9)	(169,747.2)			
Actual	59,494.5	2,498,771.0	4,927,194.2	171,907.30			
Consumed: Estimate	52,021.2	2,184,892.0	4,739,576.1	153,957.97			
Actual	(52,449.6)	(2,202,883.0)	(4,763,900.6)	(134,308.9)	90.8282		
Balance Per G/L 03/31/2020	41,917.0	1,760,514	3,348,125.63	153,071.97	79.8751		
Purchases	xxxxxxxxxxxx	xxxxxxxxxxxxxxxx	xxxxxxxxxxxxxxxx	xxxxxxxxxxxxxxxx			
Transfer out	xxxxxxxxxxxx	xxxxxxxxxxxxxxxx	xxxxxxxxxxxxxxxx	xxxxxxxxxxxxxxxx			
Transfer in	62,599.8	2,629,192.0	3,796,387.8	177,996.3	60.6454		
Consumed	(47,211.0)	(1,982,861.0)	(3,793,419.9)	(150,322.94)	80.3504	3.1841	83.5344
Balance @ 04/30/2020	58,251.6	2,446,569	3,407,985.20	180,745.32	58.5045		
Inventory From Offsite/Transfers	0.0	0.0	0.0	0.00			
Est'd Inventory Addition	0.0	0	0.0	0.00			
Fuel Balance @ Avg Price	58,251.6	2,446,569	3,407,985.20	180,745.32	58.5045		
Reverse Fuel Balance	xxxxxxxxxxxx	xxxxxxxxxxxxxxxx	(3,407,985.2)	xxxxxxxxxxxxxxxx			
Fuel Balance @ Avg Price	xxxxxxxxxxxx	xxxxxxxxxxxxxxxx	3,464,753.9	xxxxxxxxxxxxxxxx			
Total @ 05/01/2020 Avg Price	58,251.6	2,446,569	3,464,753.93	180,745.32	59.4791		

Weighted Avg Cost/BBL by Location

58.5045

3.1028

Weighted Avg Cost/BBL @ Avg Cost

59.4791

3.1028

HAWAII ELECTRIC LIGHT CO., INC.
Estimated Weighted Average
April 2020

PUNA CT-3

HS Diesel	BBL	GALLONS	COST EXCLUD LT	LAND TRANSP	COST PER EXCL LT	BARREL LT	TOTAL
Balance at 03/31/2020	5,169.3	217,110.0	452,941.8	7,678.3			
Less: Est'd Inven Addition	0.0	0.0	0.0	0.0			
Purchases: Estimate		XXXXXXXXXXXXXXXXXX	XXXXXXXXXXXXXXXXXX	XXXXXXXXXXXXXXXXXX			
Actual		XXXXXXXXXXXXXXXXXX	XXXXXXXXXXXXXXXXXX	XXXXXXXXXXXXXXXXXX			
Transfers out: Estimate		XXXXXXXXXXXXXXXXXX	XXXXXXXXXXXXXXXXXX	XXXXXXXXXXXXXXXXXX			
Actual		XXXXXXXXXXXXXXXXXX	XXXXXXXXXXXXXXXXXX	XXXXXXXXXXXXXXXXXX			
Transfers in: Estimate	(1,843.8)	(77,440.0)	(147,009.9)	(2,044.4)			
Actual	2,529.7	106,246.0	226,397.0	3,142.7			
Consumed: Estimate	1,693.6	71,130.0	154,298.7	2,434.3			
Actual	(1,582.6)	(66,470.0)	(210,472.4)	(2,274.8)			
Balance Per G/L 03/31/2020	5,966.1	250,576	476,155.13	8,936.02			
Purchases		XXXXXXXXXXXXXXXXXX	XXXXXXXXXXXXXXXXXX	XXXXXXXXXXXXXXXXXX			
Transfer out		XXXXXXXXXXXXXXXXXX	XXXXXXXXXXXXXXXXXX	XXXXXXXXXXXXXXXXXX			
Transfer in	2,387.9	100,291.0	135,692.6	2,647.7	56.8255		
Consumed	(3,906.2)	(164,059)	(313,861.98)	(5,802.09)	80.3504	1.4854	81.8357
Balance @ 04/30/2020	4,447.8	186,808	297,985.70	5,781.62	66.9961		
Inven From Offsite/Transfers	0.0	0	0.00	0.00			
Est'd Inventory Addition	0.0	0	0.00	0.00			
Fuel Balance @ 04/30/2020	4,447.8	186,808	297,985.70	5,781.62	66.9961		
Reverse Fuel Balance		XXXXXXXXXXXXXXXXXX	(297,985.70)	XXXXXXXXXXXXXXXXXX			
Fuel Balance @ Avg Price		XXXXXXXXXXXXXXXXXX	264,551.60	XXXXXXXXXXXXXXXXXX			
Total @ 05/01/2020 Avg Price	4,447.8	186,808	264,551.60	5,781.62	59.4791		

Weighted Avg Cost/BBL by Location 66.9961 1.2999

Weighted Avg Cost/BBL @ Avg Cost 59.4791 1.2999

HAWAII ELECTRIC LIGHT CO., INC.
Estimated Weighted Average
April 2020

TOTAL HILO HS-DIESEL

HS Diesel	BBL	GALLONS	COST EXCLUDE LT	LAND TRANSP	COST PER EXCL LT	BARREL LT	TOTAL
Balance at 03/31/2020	1433.7	60,214	131,456	1,733			
Less: Est'd Inven Addition	0.0	0	0	0			
Purchases: Estimate		XXXXXXXXXXXX	XXXXXXXXXXXX	XXXXXXXXXXXX			
Actual		XXXXXXXXXXXX	XXXXXXXXXXXX	XXXXXXXXXXXX			
Transfers out: Estimate		XXXXXXXXXXXX	XXXXXXXXXXXX	XXXXXXXXXXXX			
Actual		XXXXXXXXXXXX	XXXXXXXXXXXX	XXXXXXXXXXXX			
Transfers in: Estimate	0.0	0.0	0.0	0.0			
Actual	376.2	15800.0	30178.4	369.7			
Consumed: Estimate	83.3	3498.0	7588.0	95.6			
Actual	-53.8	-2261.0	-22427.1	-61.8			
Balance Per G/L 03/31/2020	1839.3	77,251	146,795.63	2,136.49	79.8102		
Purchases		XXXXXXXXXXXX	XXXXXXXXXXXX	XXXXXXXXXXXX	XXXXXXXXXXXX		
Transfer out		XXXXXXXXXXXX	XXXXXXXXXXXX	XXXXXXXXXXXX	XXXXXXXXXXXX		
Transfer in	-2.1	-88.0	0.0	0.0	0.0000		
Consumed	-95.5	-4011.0	-7673.5	-115.4	80.3504	1.2088	81.5591
Balance @ 04/30/2020	1,741.7	73,152	139,122.17	2,021.05	79.8766		
Inven From Offsite/Transfers	0.0	0.0	0.0	0.0			
Est'd Inventory Addition	0.0	0.0	0.0	0.0			
Fuel Balance @ Avg Price	1,741.7	73,152	139,122.17	2,021.05	79.8766		
Reverse Fuel Balance		XXXXXXXXXXXX	XXXXXXXXXXXX -139,122.17	XXXXXXXXXXXX			
Fuel Balance @ Avg Price		XXXXXXXXXXXX	XXXXXXXXXXXX 103,595.56	XXXXXXXXXXXX			
Total @ 05/01/2020 Avg Price	1,741.7	73,152	103,595.56	2,021.05	59.4791		
Weighted Avg Cost/BBL by Location			79.8766	1.1604			
Weighted Avg Cost/BBL @ Avg Cost			59.4791	1.1604			

HAWAII ELECTRIC LIGHT CO., INC.
Estimated Weighted Average
April 2020

KEAHOLE ULSD

ULSD	BBL	GALLONS	COST EXCLUDE LT	LAND TRANSP	COST PER BARREL EXCLUD LT	LT	TOTAL
Balance at 03/31/2020	2,044.7	85,877	186,039.07	7,865.61			
Less: Est'd Inventory Addition	0.0						
Purchases: Estimate	(190.0)	(7,980)	(15,391.82)	(540.25)			
Actual	189.1	7,943	15,433.76	0.00			
Transfers out: Estimate		xxxxxxxxxxxx	xxxxxxxxxxxx	xxxxxxxxxxxx			
Actual		xxxxxxxxxxxx	xxxxxxxxxxxx	xxxxxxxxxxxx			
Transfers in: Estimate		(104)	0.00	(7.04)			
Actual		48	0.00	537.74			
Consumed: Estimate	129.2	5,427	12,041.87	416.51			
Actual	(152.8)	(6,418)	(14,240.79)	(623.86)	93.1931		
Balance Per G/L 03/31/2020	2,018.9	84,793	183,882.09	7,648.71	91.0812		
Purchases	0.0	0	0.00	0.00	0.0000		
Estimated Purchases	190.0	7,980	11,411.40	540.25			
Transfer in	2.2	91	0.00	6.16	0.00		
Consumed	(101.4)	(4,258)	(9,334.31)	(390.00)	92.0717	3.8468	95.9185
Balance @ 04/30/2020	2,109.7	88,606	185,959.17	7,805.12	88.1462		
Inventory From Offsite/Transfers	0.0	0	0.00	0.00			
Est'd Inventory Addition	0.0	0	0.00	0.00			
Fuel Balance @ Avg Price	2,109.7	88,606	185,959.17	7,805.12	88.1462		
Reverse Fuel Balance	xxxxxxxxxxxx	xxxxxxxxxxxx	(185,959.17)	xxxxxxxxxxxx			
Fuel Balance @ Avg Price	xxxxxxxxxxxx	xxxxxxxxxxxx	191,176.08	xxxxxxxxxxxx			
Total @ 05/01/2020 Avg Price	2,109.7	88,606	191,176.08	7,805.12	90.6191		
Weighted Avg Cost/BBL by Location			88.1462	3.6997			
Weighted Avg Cost/BBL @ Avg Cost			90.6191	3.6997			

HAWAII ELECTRIC LIGHT CO., INC.
Estimated Weighted Average
April 2020

WAIMEA DIESEL

ULSD	BBL	GALLONS	COST EXCLUDE LT	LAND TRANSP	COST PER BARREL	LT	TOTAL
Balance at 03/31/2020	828.4	34,792.0	75,810.2	2,462.09			
Less: Est'd Inven Addition	0.0	0.0	0.00	0.00			
Purchases: Estimate		0	0.00	0.00			
Actual		0.0	0.0	0.00			
Transfers out: Estimate		xxxxxxxxxxxx	xxxxxxxxxxxx	xxxxxxxxxxxx			
Actual		xxxxxxxxxxxx	xxxxxxxxxxxx	xxxxxxxxxxxx			
Transfers in: Estimate	(5.0)	(209)	0.00	0.00			
Actual	5.0	209	0.00	0.00			
Consumed: Estimate	109.2	4,585	10,173.57	319.60			
Actual	(87.1)	(3,658)	(8,116.67)	(254.98)			
Balance Per G/L 03/31/2020	850.5	35,719	77,867.09	2,526.70	91.5596		
ULSD Purchases	188.8	7,928	11,354.28	447.14	60.1513		
Estimated Purchases	-	0	0.00	0.00			
Transfer in	xxxxxxxxxxxx	20	0.00	0.00	#DIV/0!		
Consumed	(177.8)	(7,466)	(16,366.84)	(528.34)	92.0717	2.9722	95.0438
Balance @ 04/30/2020	861.9	36,201	72,854.53	2,445.51	84.5250		
Inven From Offsite/Transfers	0.0	0	0.00	0.00			
Est'd Inventory Addition	0.0	0	0.00	0.00			
Fuel Balance @ Avg Price	861.9	36,201	72,854.53	2,445.51	84.5250		
Reverse Fuel Balance	xxxxxxxxxxxx	xxxxxxxxxxxx	(72,854.53)	xxxxxxxxxxxx			
Fuel Balance @ Avg Price	xxxxxxxxxxxx	xxxxxxxxxxxx	78,107.18	xxxxxxxxxxxx			
Total @ 05/01/2020 Avg Price	861.9	36,201	78,107.18	2,445.51	90.6191		

Weighted Avg Cost/BBL by Location

84.5250 2.8372

Weighted Avg Cost/BBL @ Avg Cost

90.6191 2.8372

HAWAII ELECTRIC LIGHT CO., INC.
Estimated Weighted Average
April 2020

KANOELEHUA DIESEL

ULSD	BBL	GALLONS	COST EXCLUDE LT	LAND TRANSP		
Balance at 03/31/2020	671.7	28,212.0	64,515.2	829.5		
Less: Est'd Inventory Addition	0.0	0	0.00	0.00		
Purchases: Estimate	0.0	0	0.00	0.00		
Actual	0.0	0	0.00	0.00		
Transfers out: Estimate		x	x	x		
Actual		x	x	x		
Transfers in: Estimate		0	0.00	0.00		
Actual		0	0.00	0.00		
Consumed: Estimate	38.5	1,617	967.04	26.58		
Actual	(30.0)	(1,259)	(2,793.57)	(227.37)		
Balance Per G/L 03/31/2020	680.2	28,570	62,688.69	628.75		
ULSD Purchases	0	0	0.00	0.00	#DIV/0!	
Estimated Purchases	0	-	-	-		
Transfer in	0	0	0.00	0.00		
Consumed	(97.9)	(4,110)	(967.04)	(26.58)	92.07167603	1.2350
Balance @ 04/30/2020	582.4	24,460	61,721.65	602.17		
Inventory From Offsite/Transfers	0.0	0	0.00	0.00		
Est'd Inventory Addition	0.0	0	0.00	0.00		
Fuel Balance @ Avg Price	582.4	24,460	61,721.65	602.17		
Reverse Fuel Balance	x	x	(61,721.65)	x		
Fuel Balance @ Avg Price	x	x	52,774.83	x		
Total @ 05/01/2020 Avg Price	582.4	24,460	52,774.83	602.17		
Weighted Avg Cost/BBL by Location			105.9816	1.0340		
Weighted Avg Cost/BBL @ Avg Cost			90.6191	1.0340		

HAWAII ELECTRIC LIGHT CO., INC.
Estimated Weighted Average
April 2020

DISPERSED GENERATION

	BBL	GALLONS	COST	COST/BBL
Balance at 03/31/2020	137.3	5,765	12,647.82	
Less: Est'd Inven Addition	0.0	XXXXXXXXXXXXXXXXXXXX		
Purchases: Estimate	0.0	0	0.00	
Actual	0.0	0	0.00	
Consumed: Estimate	7.9	331	734.45	
Actual	(6.2)	(260)	760.22	
	XXXXXXXXXX	XXXXXXXXXXXX	XXXXXXXXXXXX	
	XXXXXXXXXX	XXXXXXXXXXXX	XXXXXXXXXXXX	
	XXXXXXXXXX	XXXXXXXXXXXX	XXXXXXXXXXXX	
	XXXXXXXXXX	XXXXXXXXXXXX	XXXXXXXXXXXX	
Balance Per G/L 03/31/2020	138.95	5,836	14,142.49	101.7794
Purchases	0.0	0	0.00	0.0000
Transfer out	XXXXXXXXXX	XXXXXXXXXXXX	XXXXXXXXXXXX	
Transfer in	XXXXXXXXXX	XXXXXXXXXXXX	XXXXXXXXXXXX	
Consumed	(19.3)	(810)	(1,775.67)	92.0717
Balance @ 04/30/2020	119.7	5,026	12,366.82	103.3439
Est'd Inventory Addition	0.0	0	0.00	
Fuel Balance @ 04/30/2020	119.7	5,026	12,366.82	
Reverse Fuel Balance	XXXXXXXXXXXX	XXXXXXXXXXXX	(12,366.82)	xxxx
Fuel Balance @ Avg Price	XXXXXXXXXXXX	XXXXXXXXXXXX	10,844.08	xxxx
Total @ 05/01/2020 Avg Price	119.7	5,026	10,844.08	90.6191

HAWAII ELECTRIC LIGHT COMPANY, INC.
CONTRACT PRICES EFFECTIVE April 1, 2020

TYPE OF OIL BURNED

INDUSTRIAL *	<u>Hill Industrial</u>		<u>Puna Industrial</u>	
	<u>¢/MBTU</u>	<u>\$/BBL</u>	<u>¢/MBTU</u>	<u>\$/BBL</u>
Tax ¹	50.80	3.1999	50.80	3.1999
Ocean Transportation	53.47	3.3684	53.47	3.3684
Storage	34.07	2.1466	34.07	2.1466
Wharfage	6.35	0.4000	6.35	0.4000
Fees ²	1.43	0.0900	1.43	0.0900
	<u>Hilo Diesel</u>		<u>Waimea Diesel</u>	
DIESEL *	<u>¢/MBTU</u>	<u>\$/BBL</u>	<u>¢/MBTU</u>	<u>\$/BBL</u>
Tax ¹	68.31	4.0025	68.31	4.0025
Ocean Transportation	57.48	3.3684	57.48	3.3684
Storage	28.41	1.6649	28.41	1.6649
Wharfage	6.83	0.4000	6.83	0.4000
Fees ²	1.54	0.0900	1.54	0.0900
	<u>Kona Diesel</u>		<u>CT3 Diesel</u>	
	<u>¢/MBTU</u>	<u>\$/BBL</u>	<u>¢/MBTU</u>	<u>\$/BBL</u>
Tax ¹	68.31	4.0025	68.31	4.0025
Ocean Transportation	57.48	3.3684	57.48	3.3684
Storage	28.41	1.6649	28.41	1.6649
Wharfage	6.83	0.4000	6.83	0.4000
Fees ²	1.54	0.0900	1.54	0.0900
	<u>ULSD</u>			
ULSD **	<u>¢/MBTU</u>	<u>\$/BBL</u>		
Tax ¹	75.14	4.3060		
Ocean Transportation	0.00	0.0000		
Storage	0.00	0.0000		
Wharfage	0.00	0.0000		
Fees ²	1.57	0.0900		

¹ Tax includes HGET, Hawaii Use Tax, Liquid Fuel Tax, LUST Tax and Environmental Response Tax.

Federal Oil Spill Recovery Fee reinstated as of January 2020.

HGET rate changed to 4.7120% in 2020.

² With the change in supplier to PAR some fees have been taken off the pricing sheet.

inventory, contract prices for the current month are being provided.

Contract prices are considered accurate pending actual delivery of fuel.

* Land Transportation Costs are shown in Attachment 3, Sheet 1.

** ULSD includes Waimea, Kanoelehua, and Keahole.

Reference: Decision and Order No. 16134, Docket No. 96-0040.

Hawaii Electric Light Company, Inc.
PURCHASED POWER PRICES FOR May 1, 2020

		<u>May 1, 2020</u> <u>(¢/kWh)</u>	<u>Floor Rates</u> <u>(¢/kWh)</u>
PGV (25 MW)	- on peak	11.033	6.560
PGV (22 MW)	- off peak	9.779	5.430
WAILUKU HYDRO	- on peak	11.033	7.240
	off peak	9.779	5.970
Other: (<100 KW)	Sch Q Rate	10.180	
		<u>May 1, 2020</u> <u>(¢/kWh)</u>	<u>Floor Rates</u> <u>(¢/kWh)</u>
HEP		9.106	
PGV Addtl 5 MW	- on peak	13.250	0.0000
	- off peak	13.250	0.0000
PGV Addtl 8 MW	- on peak	10.100	0.0000
	- off peak	6.740	0.0000

Hawaii Electric Light Company, Inc.
Energy Cost Reconciliation Adjustment
May 1, 2020

<u>Line No.</u>	<u>Description</u>	<u>Amount</u>
1	Amount to be (returned) or collected	(\$2,567,100)
2	Monthly Amount ($\frac{1}{3}$ x Line 1)	(\$855,700)
3	Revenue Tax Divisor	0.91115
4	Total (Line 2 / Line 3)	(\$939,143)
5	Estimated MWh Sales (May 1, 2020)	74,212 mwh
6	Adjustment (Line 4 / Line 5)	(1.265) ¢/kwh

HAWAII ELECTRIC LIGHT COMPANY, INC.
2020 FUEL OIL ADJUSTMENT RECONCILIATION SUMMARY
(Thousand \$)

<u>LINE</u>	<u>DESCRIPTION</u>	Info Only March 2020 YTD Total <u>No Deadband</u>	collectn by company*	Basis for Recon March 2020 YTD Total <u>Deadband</u>	Collection or Refund by <u>Company</u>
	ACTUAL COSTS:				
1	Generation	\$22,429.7		\$22,429.7	
2	Distributed Generation	\$2.0		\$2.0	
3	Purch Power	\$15,252.9		\$15,252.9	
4	TOTAL	<u>\$37,684.6</u>		<u>\$37,684.6</u>	
	FUEL FILING COST				
5	Generation	\$22,986.3		\$22,733.6	
6	Distributed Generation	\$2.0		\$2.0	
7	Purch Power	\$15,252.9		\$15,252.9	
8	TOTAL	<u>\$38,241.2</u>		<u>\$37,988.5</u>	
	BASE FUEL COST				
9	Generation	\$0.0		\$0.0	
10	Distributed Generation	\$0.0		\$0.0	
11	Purch Power	\$0.0		\$0.0	
12	TOTAL	<u>\$0.0</u>		<u>\$0.0</u>	
13	FUEL-BASE COST (Line 8-12)	\$38,241.2		\$37,988.5	
14	ACTUAL FOA LESS TAX	\$39,821.9		\$39,821.9	
15	Less: FOA reconciliation adj for prior year	-\$736.8		-\$736.8	
15A	Less: Non-Adjustable Component Revenues Less Tax	\$3.1		\$3.1	
16	ADJUSTED FOA LESS TAX	<u>\$40,555.6</u>		<u>\$40,555.6</u>	
17	FOA-(FUEL-BASE) (Line 16-13)	\$2,314.4	over	\$2,567.1	over
	ADJUSTMENTS:				
18	Current year FOA accrual reversal	\$0.0		\$0.0	
19	Other prior year FOA	\$0.0		\$0.0	
20	Other	\$0.0		\$0.0	
21	QUARTERLY FOA RECONCILIATION (Line 17+18+19+20)	<u>\$2,314.4</u>	over	<u>\$2,567.1</u>	over
22	FOA Reconciliation to be Returned or Collected			2,567.1	over

* Over means an over-collection by the Company.
Under means an under-collection by the Company.

**Hawai'i Electric Light Company
DEADBAND CALCULATION
For Period: January 1, 2020 to March 31, 2020**

	Notes	YTD
<u>Industrial</u>		
Industrial Efficiency Factor (per D&O), BTU/kWh*	f	14,389
Industrial Deadband Definition, +/- BTU/kWh	d	100
Industrial Portion of Recorded Sales, kWh	a	51,503,053
Industrial Consumption (Recorded), MMBTU	b	745,547
Industrial Efficiency Factor (Recorded), BTU/kWh	c=(b/a) x 1000	14,476
Lower limit of Industrial Deadband, BTU/kWh	e= f-d	14,289
Higher limit of Industrial Deadband, BTU/kWh	g=f+d	14,489
Industrial Efficiency Factor for cost-recovery, BTU/kWh	h=c, e, or g	14,476
<u>Diesel</u>		
Diesel Efficiency Factor (per D&O), BTU/kWh*	f	10,580
Diesel Deadband Definition, +/- BTU/kWh	d	200
Diesel Portion of Recorded Sales, MWh	a	93,647,649
Diesel Consumption (Recorded), MMBTU	b	952,355
Diesel Efficiency Factor (Recorded), BTU/kWh	c=(b/a) x 1000	10,170
Lower limit of Diesel Deadband, BTU/kWh	e= f-d	10,380
Higher limit of Diesel Deadband, BTU/kWh	g=f+d	10,780
Diesel Efficiency Factor for cost-recovery, BTU/kWh	h=c, e, or g	10,380
<u>Biodiesel</u>		
Biodiesel Efficiency Factor (per D&O), BTU/kWh*	f	0
Biodiesel Deadband Definition, +/- BTU/kWh	d	100
Biodiesel Portion of Recorded Sales, MWh	a	0
Biodiesel Consumption (Recorded), MMBTU	b	0
Biodiesel Efficiency Factor (Recorded), BTU/kWh	c=(b/a) x 1000	0
Lower limit of Biodiesel Deadband, BTU/kWh	e= f-d	-100
Higher limit of Biodiesel Deadband, BTU/kWh	g=f+d	100
Biodiesel Efficiency Factor for cost-recovery, BTU/kWh	h=c, e, or g	0
<u>Hydro</u>		
Hydro Efficiency Factor (per D&O), BTU/kWh*	f	11,999
Hydro Deadband Definition, +/- BTU/kWh	d	100
Hydro Portion of Recorded Sales, MWh	a	2,950,410
Hydro Consumption (Recorded), MMBTU	b	34,521
Hydro Efficiency Factor (Recorded), BTU/kWh	c=(b/a) x 1000	11,700
Lower limit of Hydro Deadband, BTU/kWh	e= f-d	11,899
Higher limit of Hydro Deadband, BTU/kWh	g=f+d	12,099
Hydro Efficiency Factor for cost-recovery, BTU/kWh	h=c, e, or g	11,899

* YTD Efficiency Factor (per D&O) is actual YTD & projected to the end of the year weighted by calendar days in the year.

HAWAII ELECTRIC LIGHT COMPANY, INC.
GENERATION FUEL FILING COST AND GENERATION BASE FUEL COST
WITHOUT and WITH DEADBAND
2020

	Without Deadband	With Deadband
	Jan 1 -Mar 31	As Filed
	<u>Jan 1 -Mar 31</u>	<u>Jan 1 -Mar 31</u>
<u>INDUSTRIAL FUEL FILING COST</u>		
Industrial Portion of Recorded Sales , kWh	51,503,053	51,503,053
Industrial Efficiency Factor (mmbtu/kwh)	0.014389	0.014476
Mmbtu adjusted for Sales Efficiency Factor	741,077	745,558
\$/mmbtu	<u>\$9.8349</u>	<u>\$9.8349</u>
TOTAL INDUSTRIAL \$000s TO BE RECOVERED	\$7,288.394	\$7,332.462
<u>DIESEL FUEL FILING COST</u>		
Diesel Portion of Recorded Sales, kWh	93,647,649	93,647,649
Diesel Efficiency Factor (mmbtu/kwh)	0.010580	0.010380
Mmbtu adjusted for Sales Efficiency Factor	990,792	972,063
\$/mmbtu	<u>\$15.8437</u>	<u>\$15.8437</u>
TOTAL DIESEL \$000s TO BE RECOVERED	\$15,697.859	\$15,401.113
<u>HYDRO FUEL FILING COST</u>		
Hydro Portion of Recorded Sales , kWh	2,950,410	2,950,410
Hydro Efficiency Factor (mmbtu/kwh)	0.011999	0.011899
Mmbtu adjusted for Sales Efficiency Factor	35,402	35,107
\$/mmbtu	<u>\$0.0000</u>	<u>\$0.0000</u>
TOTAL HYDRO \$000s TO BE RECOVERED	\$0.000	\$0.000
TOTAL GENERATION FUEL FILING COST, \$000s	\$22,986.3	\$22,733.6
<u>CALCULATION OF GENERATION BASE FUEL COST</u>		
TOTAL GENERATION BASE FUEL COST, \$000s	\$0.0	\$0.0
TOTAL GENERATION FUEL FILING COST, \$000s YTD	\$22,986.3	\$22,733.6
TOTAL GENERATION BASE FUEL COST YTD	\$0.0	\$0.0

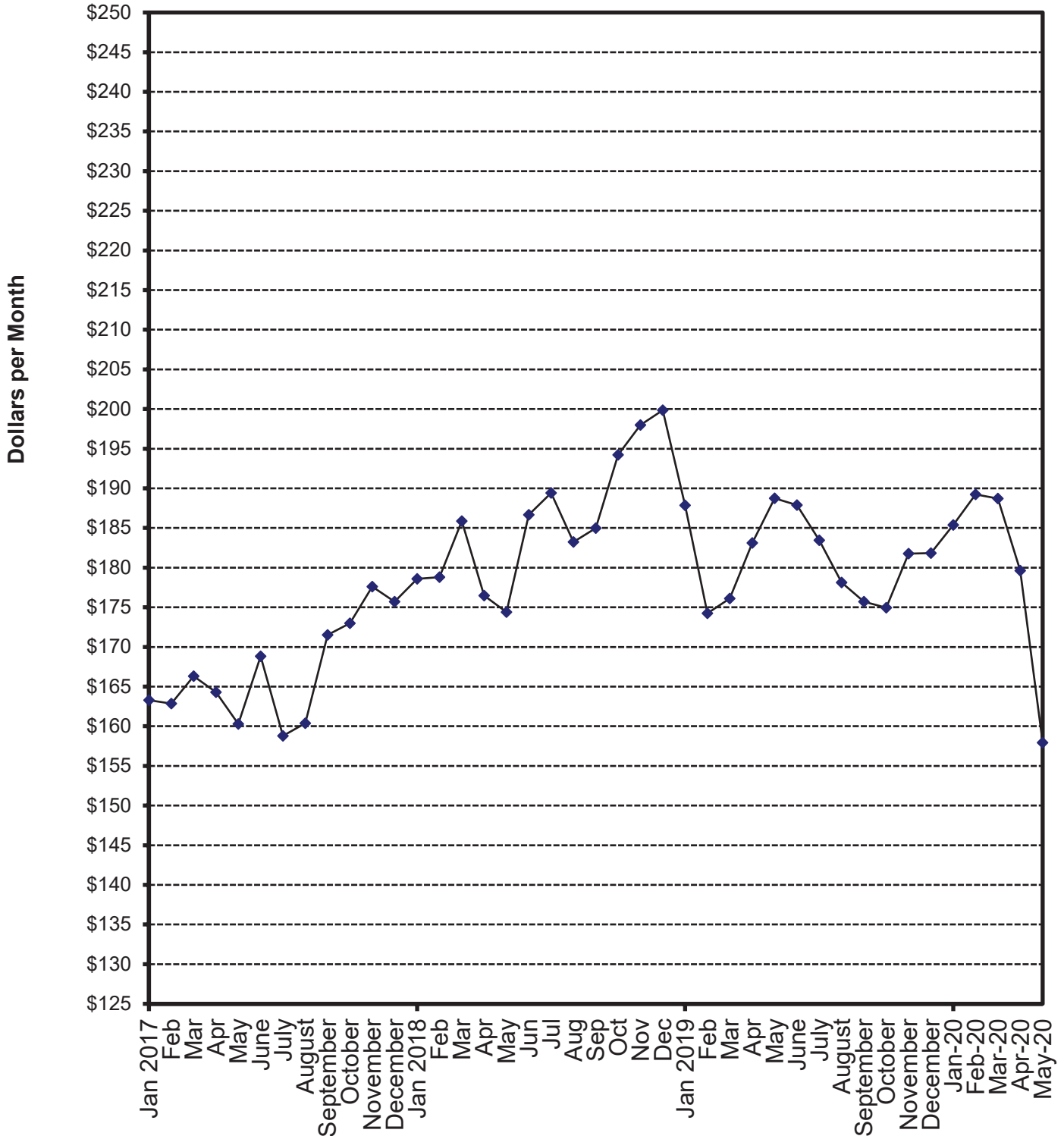
HAWAII ELECTRIC LIGHT COMPANY, INC.
2020 Cumulative Reconciliation Balance

<u>Month</u>	(1) <u>YTD FOA Reconciliation</u>	<u>Qtr</u>	(2) <u>FOA Rec Adjust Variance</u>	(3) <u>FOA Rec Less Variance</u>	(4) <u>Try to Collect</u>	(5) <u>Actual Collect</u>	(6) <u>Month-end Cumulative Balance</u>
January 19					(305,667)	(300,243)	32,773
February	2,598,900	[4]	(8,054)	2,606,954	(866,300)	(800,636)	1,839,091
March					(866,300)	(825,091)	1,014,000
April					(866,300)	(829,484)	184,516
May	1,745,900	(1)	112,297	1,633,603	(581,967)	(565,304)	1,252,815
June					(581,967)	(585,631)	667,184
July					(581,967)	(586,240)	80,944
August	3,027,900	[2]	49,815	2,978,085	(1,009,300)	(1,025,775)	2,033,254
September					(1,009,300)	(1,026,151)	1,007,103
October					(1,009,300)	(1,007,209)	(106)
November	1,927,900	[3]	(37,599)	1,965,499	(642,633)	(651,308)	1,314,085
December 19					(642,633)	(646,001)	668,084
January 20					(642,633)	(673,144)	(5,060)
February	141,300	[4]	(9,952)	151,252	(47,100)	(45,511)	100,681
March					(47,100)	(46,650)	54,031
April					(47,100)		
May	2,567,100	(1)	(28,472)	2,595,572	(855,700)		

NOTES:

- Col(1): Quarterly FOA reconciliation amounts. (Refer to Attachment 6)
A positive number is an over-collection. A negative number is an under-collection.
- Col(2): FOA reconciliation adjustment variance accumulated during the last three months, starting with the fourth prior month; the difference between the estimated recorded sales used to derive the \$/kwh adjustment and the actual recorded sales.
(Col(5)-Col(4))
- Col(3): FOA reconciliation generated in the current quarter. The YTD FOA reconciliation difference minus the adjustment variance. Col(1)-Col(2)
- Col(4): Amount that the FOA reconciliation adjustment is trying to collect. (Col(1) * 1/3)
- Col(5): Actual collected amount. (recorded sales * \$/kwh adjustment/1.09751)
- Col(6): Cumulative balance of the FOA reconciliation (Previous balance + Col(3) + Col(5))

Hawaii Electric Light Company, Inc. Residential Bill at 500 KWH/Month Consumption



**HAWAII ELECTRIC LIGHT COMPANY, INC.
FUEL OIL ADJUSTMENT FACTOR DATA**

<u>EFFECTIVE DATE</u>	<u>FUEL FACTOR</u> <u>CENTS / KWH</u>		
	<u>RESIDENTIAL &</u> <u>COMMERCIAL</u>	<u>RESIDENTIAL BILL (\$)</u> <u>@ 500 KWH</u>	<u>@ 600 KWH</u>
January 1, 2017	-2.842	163.27	195.58
February 1, 2017	-2.956	162.87	195.09
March 1, 2017	-2.274	166.31	199.24
April 1, 2017	-2.425	164.31	196.83
May 1, 2017	-3.035	160.30	192.02
June 1, 2017	-1.343	168.82	202.25
July 1, 2017	-3.220	158.79	190.22
August 1, 2017	-3.643	160.39	192.15
September 1, 2017	-2.447	171.52	205.50
October 1, 2017	-2.131	172.97	207.23
November 1, 2017	-0.885	177.60	212.80
December 1, 2017	-1.405	175.02	209.69
January 1, 2018	-0.723	178.59	213.95
February 1, 2018	-0.579	178.81	214.22
March 1, 2018	0.816	185.87	222.68
April 1, 2018	-0.912	176.46	211.39
May 1, 2018	-0.452	174.38	208.90
June 1, 2018	2.301	186.65	223.63
July 1, 2018	2.831	189.43	226.97
August 1, 2018	1.665	183.25	219.55
September 1, 2018	2.027	184.98	221.62
October 1, 2018	8.359	194.21	232.50
November 1, 2018	8.913	197.99	237.04
December 1, 2018	9.292	199.86	239.29
January 1, 2019	6.867	187.86	224.86
February 1, 2019	14.631	174.25	208.53
March 1, 2019	14.976	176.1	210.75
April 1, 2019	16.469	183.12	219.17
May 1, 2019	17.396	188.74	225.93
June 1, 2019	17.318	187.89	224.90
July 1, 2019	16.450	183.46	219.63
August 1, 2019	15.331	178.14	213.25
September 1, 2019	14.845	175.70	210.32
October 1, 2019	14.692	174.93	209.40
November 1, 2019	16.302	181.76	217.59
December 1, 2019	16.288	181.82	217.67
January 1, 2020	16.768	185.37	221.88
February 1, 2020	17.547	189.22	226.49
March 1, 2020	17.424	188.72	225.90
April 1, 2020	15.644	179.61	214.96
May 1, 2020	11.215	157.94	188.96

**HAWAII ELECTRIC LIGHT COMPANY, INC.
RESIDENTIAL SURCHARGE DATA**

EFFECTIVE DATE	DESCRIPTION OF SURCHARGE	RATE
1/1/2018 - 1/31/18	PURCHASED POWER ADJUSTMENT CLAUSE	2.4105 CENTS/KWH
1/1/18-6/30/18	GREEN INFRASTRUCTURE FEE	1.3400 DOLLARS/MONTH
2/1/18-2/28/18	PURCHASED POWER ADJUSTMENT CLAUSE	2.3101 CENTS/KWH
3/1/18 - 3/31/18	PURCHASED POWER ADJUSTMENT CLAUSE	2.3258 CENTS/KWH
04/1/18-04/30/18	PURCHASED POWER ADJUSTMENT CLAUSE	2.3184 CENTS/KWH
04/1/18-04/30/18	SOLARSAVER ADJUSTMENT	-0.1464 CENTS/KWH
05/1/18-05/31/18	PURCHASED POWER ADJUSTMENT CLAUSE	2.3395 CENTS/KWH
05/1/18-05/31/18	SOLARSAVER ADJUSTMENT	0.0000 CENTS/KWH
5/1/2018	INTERIM RATE INCREASE 2016	2.5000 PERCENT ON BASE
06/01/18-06/30/18	PURCHASED POWER ADJUSTMENT CLAUSE	1.6729 CENTS/KWH
6/1/2018	RBA RATE ADJUSTMENT	1.0006 CENTS/KWH
07/01/18-07/31/18	PURCHASED POWER ADJUSTMENT CLAUSE	1.6811 CENTS/KWH
7/1/2018- 12/31/18	GREEN INFRASTRUCTURE FEE	1.2100 DOLLARS/MONTH
7/1/2018	RESIDENTIAL PBF SURCHARGE ADJUSTMENT	0.4658 CENTS/KWH
08/01/18-08/31/18	PURCHASED POWER ADJUSTMENT CLAUSE	1.6110 CENTS/KWH
09/01/18-09/30/18	PURCHASED POWER ADJUSTMENT CLAUSE	1.5950 CENTS/KWH
10/01/18-10/31/18	PURCHASED POWER ADJUSTMENT CLAUSE	1.8602 CENTS/KWH
10/1/2018	INTERIM RATE INCREASE 2016	0.0000 PERCENT ON BASE
10/1/2018	FINAL RATE INCREASE (TY 2016) 0.53% EFFECTIVE 10/01/18, DOCKET NO. 2015-0170	
11/1/2018-11/30/18	PURCHASED POWER ADJUSTMENT CLAUSE	2.0617 CENTS/KWH
12/1/2018-12/31/18	PURCHASED POWER ADJUSTMENT CLAUSE	2.0577 CENTS/KWH
1/1/2019-1/31/19	PURCHASED POWER ADJUSTMENT CLAUSE	2.0548 CENTS/KWH
1/1/2019- 06/30/19	GREEN INFRASTRUCTURE FEE	1.3500 DOLLARS/MONTH
2/1/2019-2/28/19	PURCHASED POWER ADJUSTMENT CLAUSE	1.8113 CENTS/KWH
3/1/2019-3/31/19	PURCHASED POWER ADJUSTMENT CLAUSE	1.8372 CENTS/KWH
04/1/2019-4/30/19	PURCHASED POWER ADJUSTMENT CLAUSE	1.8247 CENTS/KWH
04/1/19-04/30/19	SOLARSAVER ADJUSTMENT	-0.0768 CENTS/KWH
05/01/2019-5/31/19	PURCHASED POWER ADJUSTMENT CLAUSE	1.9460 CENTS/KWH
05/01/2019- 03/31/2020	SOLARSAVER ADJUSTMENT	0.0000 CENTS/KWH
06/01/2019-6/30/19	PURCHASED POWER ADJUSTMENT CLAUSE	1.9474 CENTS/KWH
6/1/2019-12/31/2019	RBA RATE ADJUSTMENT	0.9069 CENTS/KWH
7/01/2019-7/31/19	PURCHASED POWER ADJUSTMENT CLAUSE	1.9539 CENTS/KWH
7/1/2019-12/31/2019	GREEN INFRASTRUCTURE FEE	1.1700 DOLLARS/MONTH
7/1/2019-12/31/2019	RESIDENTIAL PBF SURCHARGE ADJUSTMENT	0.4775 CENTS/KWH
8/1/2019-8/31/2019	PURCHASED POWER ADJUSTMENT CLAUSE	2.0075 CENTS/KWH
9/1/2019-9/30/2019	PURCHASED POWER ADJUSTMENT CLAUSE	2.0060 CENTS/KWH
10/1/2019-10/31/2019	PURCHASED POWER ADJUSTMENT CLAUSE	2.0069 CENTS/KWH
11/1/2019-11/30/2019	PURCHASED POWER ADJUSTMENT CLAUSE	1.7616 CENTS/KWH
12/1/2019-12/31/2019	PURCHASED POWER ADJUSTMENT CLAUSE	1.7884 CENTS/KWH
1/1/2020-1/31/2020	PURCHASED POWER ADJUSTMENT CLAUSE	1.7730 CENTS/KWH
1/1/2020	GREEN INFRASTRUCTURE FEE	1.2500 DOLLARS/MONTH
1/1/2020	RBA RATE ADJUSTMENT	0.1852 CENTS/KWH
1/1/2020	INTERIM RATE ADJUSTMENT 2019	4.0900 PERCENT ON BASE
1/1/2020	RESIDENTIAL PBF SURCHARGE ADJUSTMENT	0.7437 CENTS/KWH
2/1/2020- 2/29/2020	PURCHASED POWER ADJUSTMENT CLAUSE	1.7631 CENTS/KWH
3/1/2020- 3/31/2020	PURCHASED POWER ADJUSTMENT CLAUSE	1.7883 CENTS/KWH
4/1/2020- 4/30/2020	PURCHASED POWER ADJUSTMENT CLAUSE	1.7717 CENTS/KWH
4/1/2020- 4/30/2020	SOLARSAVER ADJUSTMENT	-0.0267 CENTS/KWH
05/01/2020-5/31/2020	PURCHASED POWER ADJUSTMENT CLAUSE	1.8396 CENTS/KWH
5/1/2020	SOLARSAVER ADJUSTMENT	0.0000 CENTS/KWH

**Base charges include customer charge, demand charge, energy charge, power factor adjustment, voltage discount, and minimum charge.

Calculations of the Average Residential Customer Bill

	Rate		Charge (\$) at 500 Kwh			
	4/01/20	5/01/20	4/01/20	5/01/20	Difference	
Base Rates	effective date:	2/1/2019	2/1/2019			
Base Fuel Energy Charge	¢/kwh	-	-	\$0.00	\$0.00	\$0.00
Non-Fuel Energy Charge	¢/kwh			\$71.85	\$71.85	\$0.00
First 300 kWh per month	¢/kwh	13.0289	13.0289	\$39.09	\$39.09	\$0.00
Next 700 kWh per month	¢/kwh	16.3807	16.3807	\$32.76	\$32.76	\$0.00
Customer Charge	\$	11.50	11.50	\$11.50	\$11.50	\$0.00
Total Base Charges				\$83.35	\$83.35	\$0.00
Interim Rate Adjustment 2019 TY	% on base	4.0900%	4.0900%	\$3.41	\$3.41	\$0.00
RBA Rate Adjustment	¢/kwh	0.1852	0.1852	\$0.93	\$0.93	\$0.00
Purchased Power Adj. Clause	¢/kwh	1.7717	1.8396	\$8.86	\$9.20	\$0.34
PBF Surcharge	¢/kwh	0.7437	0.7437	\$3.72	\$3.72	\$0.00
DSM Adjustment	¢/kwh	0.0000	0.0000	\$0.00	\$0.00	\$0.00
SolarSaver Adjustment	¢/kwh	(0.0267)	0.0000	-\$0.13	\$0.00	\$0.13
Energy Cost Recovery	¢/kwh	15.6440	11.2150	\$78.22	\$56.08	-\$22.14
Green Infrastructure Fee	\$	1.2500	1.2500	\$1.25	\$1.25	\$0.00
Avg Residential Bill at 500 kwh				\$179.61	\$157.94	

Increase (Decrease -)	-\$21.67
% Change	-12.07%

	Rate		Charge (\$) at 600 Kwh			
	4/01/20	5/01/20	4/01/20	5/01/20	Difference	
Base Rates	effective date:	2/1/2019	2/1/2019			
Base Fuel/Energy Charge	¢/kwh	-	-	\$0.00	\$0.00	\$0.00
Non-Fuel Energy Charge	¢/kwh			\$88.23	\$88.23	\$0.00
First 300 kWh per month	¢/kwh	13.0289	13.0289	\$39.09	\$39.09	\$0.00
Next 700 kWh per month	¢/kwh	16.3807	16.3807	\$49.14	\$49.14	\$0.00
Customer Charge	\$	11.50	11.50	\$11.50	\$11.50	\$0.00
Total Base Charges				\$99.73	\$99.73	\$0.00
Interim Rate Adjustment 2019 TY	% on base	4.0900%	4.0900%	\$4.08	\$4.08	\$0.00
RBA Rate Adjustment	¢/kwh	0.1852	0.1852	\$1.11	\$1.11	\$0.00
Purchased Power Adj. Clause	¢/kwh	1.7717	1.8396	\$10.63	\$11.04	\$0.41
PBF Surcharge	¢/kwh	0.7437	0.7437	\$4.46	\$4.46	\$0.00
DSM Adjustment	¢/kwh	0.0000	0.0000	\$0.00	\$0.00	\$0.00
SolarSaver Adjustment	¢/kwh	(0.0267)	0.0000	-\$0.16	\$0.00	\$0.16
Energy Cost Recovery	¢/kwh	15.6440	11.2150	\$93.86	\$67.29	-\$26.57
Green Infrastructure Fee	\$	1.2500	1.2500	\$1.25	\$1.25	\$0.00
Avg Residential Bill at 600 kwh				\$214.96	\$188.96	

Increase (Decrease -)	-\$26.00
% Change	-12.10%

From: puc@hawaii.gov
Sent: Tuesday, April 28, 2020 3:00 PM
To: Watanabe, Blaine
Subject: Hawaii PUC eFiling Confirmation of Filing

[This email is coming from an EXTERNAL source. Please use caution when opening attachments or links in suspicious email.]

Your eFile document has been filed with the Hawaii Public Utilities commission on 2020 Apr 28 PM 14:59. The mere fact of filing shall not waive any failure to comply with Hawaii Administrative Rules Chapter 6-61, Rules of Practice and Procedure Before the Public Utilities Commission, or any other application requirements. Your confirmation number is BLAI20145943153. If you have received this email in error please notify the Hawaii Public Utilities Commission by phone at 808 586-2020 or email at hawaii.puc@hawaii.gov.