



May 29, 2020

The Honorable Chair and Members  
of the Hawai'i Public Utilities Commission  
Kekuanao'a Building, First Floor  
465 South King Street  
Honolulu, Hawai'i 96813

Dear Commissioners:

Subject: Hawai'i Electric Light Energy Cost Adjustment Factor for June 2020  
Revised Attachments Reflecting RBA Rate Adjustment

Enclosed for filing are revised Attachments 1, 8, 9A, 9B, and 10 of Hawai'i Electric Light Company, Inc.'s ("Hawai'i Electric Light") energy cost adjustment filing, reflecting the impact of the Company's Revenue Balancing Account ("RBA") rate adjustment, as approved by the Commission in Order No. 37150 issued on May 28, 2020.

On May 27, 2020, Hawai'i Electric Light filed its energy cost adjustment factor for June 2020 and indicated that it would file the enclosed revised attachments after the Commission issued its decision on the Company's RBA rate adjustment proposal submitted in Transmittal No. 20-02 and incorporate the impact in the customer bill analysis. There is no change to the energy cost adjustment as filed on May 27, 2020.

A residential customer consuming 500 kWh of electricity will be paying \$151.51, a decrease of \$6.43 compared to the rates effective May 1, 2020. The decrease in the typical bill is due to the decrease in the energy cost adjustment factor (-\$3.20) and the decrease in the RBA rate adjustment (-\$3.24), partially offset by the increase in the Purchased Power Adjustment (+\$0.01).

For the Commission's convenience, Hawai'i Electric Light is refiled all of the attachments included in the May 27, 2020 filing. The revised attachments are notated with "Revised 5/29/2020" in the headers; the other attachments are unchanged.

Sincerely,

/s/ Sharon M. Suzuki

Sharon M. Suzuki

President

Maui County and Hawai'i Island Utilities

Attachments

cc: Division of Consumer Advocacy

**HAWAII ELECTRIC LIGHT COMPANY, INC.**

**ENERGY COST RECOVERY FACTOR**

	<u>EFFECTIVE DATES</u>		
	<u>5/01/20</u>	<u>6/01/20</u>	<u>Change</u>
<u>Composite Cost</u>			
Generation, ¢/mmbtu	971.62	839.57	(132.05)
Dispersed Generation Energy, ¢/kWh	0.000	16.087	16.09
Purchased Energy, ¢/kWh	10.234	10.432	0.20
<u>Residential Schedule "R"</u>			
Energy Cost Recovery - ¢/kWh	11.215	10.575	(0.64)
<u>Others - "G,J,P,F"</u>			
Energy Cost Recovery - ¢/kWh	11.215	10.575	(0.64)
Residential Customer with:			
500 KWH Consumption - \$/Bill	\$157.94	\$151.51	(\$6.43)
600 KWH Consumption - \$/Bill	\$188.96	\$181.25	(\$7.71)

HAWAII ELECTRIC LIGHT COMPANY, INC.  
ENERGY COST RECOVERY (ECR) FILING

ENERGY COST RECOVERY (ECR) FILING - June 1, 2020 (Page 1 of 2)

<u>Line</u>		
1	Effective Date	June 1, 2020
2	Supersedes Factors of	May 1, 2020

**GENERATION COMPONENT**

<b><u>CENTRAL STATION WITH WIND/HYDRO COMPONENT</u></b>						
FUEL PRICES, ¢/mmbtu						
3						
4	Hill Industrial		739.84			
5	Puna Industrial		760.94			
6	Keahole Diesel		867.71			
6a	Keahole ULSD		1,630.97			
7	Waimea ULSD Diesel		1,620.58			
8	Hilo Diesel		833.04			
8a	Hilo (Kanoelehua) ULSD Diesel <sup>1</sup>		1,586.73			
9	Puna Diesel		836.24			
10	Wind		0.00			
11	Hydro		0.00			
BTU MIX, %						
12						
13	Hill Industrial		36.710			
14	Puna Industrial		7.109			
15	Keahole Diesel		40.719			
15a	Keahole ULSD		1.443			
16	Waimea ULSD Diesel		1.903			
17	Hilo Diesel		1.030			
17a	Hilo (Kanoelehua) ULSD Diesel <sup>1</sup>		0.851			
18	Puna Diesel		10.057			
19	Wind		0.000			
20	Hydro		0.178			
			100.000			
21	COMPOSITE COST OF GENERATION, CENTRAL STATION + WIND/HYDRO ¢/mmbtu		839.57			
22	% Input to System kWh Mix		47.888			
EFFICIENCY FACTOR, mmbtu/kWh						
	(A)	(B)	(C)	(D)		
			Percent of			
			Centrl Stn +			
			Wind/Hydro			
	<u>Fuel Type</u>	<u>Eff Factor</u>	<u>Weighted</u>			
		<u>mmbtu/kwh</u>	<u>Eff Factor</u>			
23	Industrial	0.014389	43.819	0.006305		
24	Diesel	0.010580	56.003	0.005925		
25	Other	0.011999	0.1780	0.000021		
	(Lines 23, 24, 25): Col(B) x Col(C) = Col(D)		100.0000			
26	Weighted Efficiency Factor, mmbtu/kWh [Lines 23(D) + 24(D) + 25(D)]			0.0122510		
27	WEIGHTED COMPOSITE CENTRAL STATION + WIND/HYDRO GENERATION COST, ¢/kWh (Lines (21 x 22 x 26))			4.92555		
28	BASE CENTRAL STATION + WIND/HYDRO GENERATION COST, ¢/mmbtu			0.00		
29	Base % Input to Sys kWh Mix			0.00		
30	Efficiency Factor, mmbtu/kwh			0.000000		
31	WEIGHTED BASE CENTRAL STATION + WIND/HYDRO GENERATION COST ¢/kWh (Lines (28 x 29 x 30))			0.00000		
32	COST LESS BASE (Line 27 - 31)			4.92555		
33	Revenue Tax Req Multiplier			1.0975		
34	CENTRAL STATION + WIND/HYDRO GENERATION FACTOR, ¢/kWh (Line (32 x 33))			5.40579		
				<b><u>DG ENERGY COMPONENT</u></b>		
				35	COMPOSITE COST OF DG ENERGY, ¢/kWh	16.087
				36	% Input to System kWh Mix	0.572
				37	WEIGHTED COMPOSITE DG ENERGY COST, ¢/kWh (Lines 35 x 36)	0.09202
				38	BASE DG ENERGY COMPOSITE COST	0.000
				39	Base % Input to System kWh Mix	0.00
				40	WEIGHTED BASE DG ENERGY COST, ¢/kWh (Line 38 x 39)	0.00000
				41	Cost Less Base (Line 37 - 40)	0.09202
				42	Loss Factor	1.072
				43	Revenue Tax Req Multiplier	1.0975
				44	DG FACTOR, ¢/kWh (Line 41 x 42 x 43)	0.10826
				SUMMARY OF TOTAL GENERATION FACTOR, ¢/kWh		
				45	Cntrl Stn+Wind/Hydro (line 34)	5.40579
				46	DG (line 44)	0.10826
				47	TOTAL GENERATION FACTOR, ¢/kWh (lines 45 + 46)	5.51405

<sup>1</sup> Hilo ULSD same location as Kanoelehua ULSD

HAWAII ELECTRIC LIGHT COMPANY, INC.  
ENERGY COST RECOVERY (ECR) FILING

ENERGY COST RECOVERY (ECR) FILING - June 1, 2020 (Page 2 of 2)

<u>Line</u>		<b>PURCHASED ENERGY COMPONENT</b>			
PURCHASED ENERGY PRICE, ¢/kWh -- Fossil					
48	HEP		9.725		
PURCHASED ENERGY PRICE, ¢/kWh -- Renewable					
49	PGV	On Peak	9.760		
50	PGV	Off Peak	8.879		
51	PGV - Add'l 5 MW	On Peak	13.250		
52	PGV - Add'l 5 MW	Off Peak	13.250		
53	PGV - Add'l 8 MW	On Peak	10.100		
54	PGV - Add'l 8 MW	Off Peak	6.740		
55	Wailuku Hydro	On Peak	9.760		
56	Wailuku Hydro	Off Peak	8.879		
57	Hawi Renewable Dev.	On Peak	9.760		
58	Hawi Renewable Dev.	Off Peak	8.879		
59	Tawhiri (Pakini Nui)	On Peak	13.100		
60	Tawhiri (Pakini Nui)	Off Peak	12.810		
61	HEP Biodiesel		9.725		
62	Small Hydro (>100 KW)	On Peak	9.760		
63	Small Hydro (>100 KW)	Off Peak	8.879		
64	Sch Q Hydro (<100 KW)		9.060		
65	FIT		23.800		
PURCHASED ENERGY KWH MIX, %, Fossil					
66	HEP, Fossil		60.017		
PURCHASED ENERGY KWH MIX, %, Renewable					
67	PGV	On Peak	0.000		
68	PGV	Off Peak	0.000		
69	PGV - Add'l	On Peak	0.000		
70	PGV - Add'l	Off Peak	0.000		
71	PGV - Add'l 8 MW	On Peak	0.000		
72	PGV - Add'l 8 MW	Off Peak	0.000		
73	Wailuku Hydro	On Peak	2.144		
74	Wailuku Hydro	Off Peak	1.527		
75	Hawi Renewable Dev.	On Peak	4.862		
76	Hawi Renewable Dev.	Off Peak	2.195		
77	Tawhiri (Pakini Nui)	On Peak	11.723		
78	Tawhiri (Pakini Nui)	Off Peak	7.452		
79	HEP Biodiesel		9.292		
80	Small Hydro (>100 KW)	On Peak	0.000		
81	Small Hydro (>100 KW)	Off Peak	0.000		
82	Sch Q Hydro (<100 KW)		0.000		
83	FIT		0.788		
			100.000		
83a	Comp. Cost Purchased Energy Fossil, ¢/kWh		9.7250		
83b	Comp. Cost Purchased Energy Renewable, ¢/kWh		11.4943		
84	COMPOSITE COST OF PURCHASED ENERGY, ¢/kWh		10.432		
85	% Input to System kWh Mix		51.540		
86	WEIGHTED COMPOSITE PURCHASED ENERGY COST, ¢/kWh (Lines (84 x 85))		5.37665		
87	BASE PURCHASED ENERGY COMPOSITE COST, ¢/kWh		0.000		
88	Base % Input to Sys kWh Mix		0.00		
89	WEIGHTED BASE PURCHASED ENERGY COST, ¢/kWh (Lines (87 x 88))		0.00000		
90	COST LESS BASE (Lines (86 - 89))		5.37665		
91	Loss Factor		1.072		
92	Revenue Tax *		1.0975		
93	PURCHASED ENERGY FACTOR, ¢/kWh (Lines (90 x 91 x 92))		6.32574		
				Derivation of Non-Adjustable Component:	
		93A	Ocean Cargo Insurance Exp, \$000		\$13.1
			HELCO-603, page 1, line 4		
		93B	Revenue Tax Adjustment		1.097514
		93C	Non-Adj Revenues, \$000		\$14.4
		93D	2019 TY Sales, MWh		1,061,718
			HELCO-301		
		93E	Non-Adj Revenues, ¢/kWh		0.00135
		<u>Line</u>	<u>SYSTEM COMPOSITE</u>		
		94	GENERATION AND PURCHASED ENERGY FACTOR, ¢/kWh (Lines (47 + 93))		11.83979
		95	Not Used		0.000
		96	Non-Adjustable Component		0.00135
		97	ECA Reconciliation Adjustment		(1.266)
		98	ECA FACTOR, ¢/kWh (Lines (94 + 95+ 96 + 97))		10.575

**Hawaii Electric Light Company, Inc.**  
FUEL OIL INVENTORY PRICES FOR June 1, 2020

**INDUSTRIAL FUEL COSTS:**

	<u>HILO</u>	<u>PUNA</u>
Average Industrial Fuel Cost - \$/BBL	46.6099	46.6099
Land Transportation Cost - \$/BBL	--	1.3295
Industrial Costs For Filing - \$/BBL	46.6099	47.9394
Conversion Factors - mmbtu/BBL	6.30	6.30
Industrial Costs For Filing - ¢/mmbtu	739.84	760.94

**DIESEL FUEL COSTS:**

	KEAHOLE	PUNA CT-3	HILO
Average Diesel Fuel Cost - \$/BBL	47.6335	47.6335	47.6335
Land Transportation Cost - \$/BBL	3.2144	1.3700	1.1825
Diesel Costs For Filing - \$/BBL	50.8479	49.0034	48.8160
Conversion Factors - mmbtu/BBL	5.86	5.86	5.86
Diesel Costs For Filing - ¢/mmbtu	867.71	836.24	833.04

**ULSD FUEL COSTS:**

	KEAHOLE	WAIMEA	HILO	DISPERSED GENERATION
Average ULSD Fuel Cost - \$/BBL	89.9642	89.9642	89.9642	89.9642
Land Transportation Cost - \$/BBL	3.4906	2.8949	0.9554	-
ULSD Costs For Filing - \$/BBL	93.4548	92.8591	90.9196	89.9642
Conversion Factors - mmbtu/BBL	5.73	5.73	5.73	5.73
ULSD Costs For Filing - ¢/mmbtu	1,630.97	1,620.58	1,586.73	1,570.06

**Dispersed Generation, cents per kWh**

	COMPOSITE COST OF DISP. GEN.
BBIs Fuel:	923.5694
\$/BBI Inv Cost:	89.9642
Fuel \$ (Prod Sim Consumption x Unit Cost)	83,088.15
Net kWh (from Prod Sim)	516,500
cents/kWh:	16.087

HAWAII ELECTRIC LIGHT CO., INC.  
Estimated Weighted Average  
May 2020

	SHIPMAN INDUSTRIAL		HILL INDUSTRIAL		COST PER BARREL		
	BBL	COST	BBL	COST	EXCL LT	LT Total	
Balance at 04/30/2020	0	0.00	43,552	2,515,937.97			
Less: Est'd Inventory Addn			0	0.00			
Purchases: Estimate	xxxxxx	xxxxxxxxxxxxxxxxxxxx	xxxxxxxx	xxxxxxxxxxxxxxxxxxxx			
Actual	xxxxxx	xxxxxxxxxxxxxxxxxxxx	xxxxxxxx	xxxxxxxxxxxxxxxxxxxx			
Transfers out: Estimate	xxxxxx	xxxxxxxxxxxxxxxxxxxx	xxxxxxxx	xxxxxxxxxxxxxxxxxxxx			
Actual	xxxxxx	xxxxxxxxxxxxxxxxxxxx	xxxxxxxx	xxxxxxxxxxxxxxxxxxxx			
Transfers in: Estimate	0	0.00	(31,662)	(1,698,049.95)			
Actual	0	0.00	29,056	1,590,727.20			
Consumed: Estimate	0	0.00	25,218	1,686,421.02			
Actual	0	0.00	(27,128)	(1,814,149.79)			
Balance Per G/L 04/30/2020	0	0.00	39,036	2,280,886.45			
Purchases	xxxxxx	xxxxxxxxxxxxxxxxxxxx	xxxxxxxx	xxxxxxxxxxxxxxxxxxxx			
Transfer out	xxxxxx	xxxxxxxxxxxxxxxxxxxx	xxxxxxxx	xxxxxxxxxxxxxxxxxxxx			
Transfer in	0	0.00	26,709	1,159,453.16			
Consumed	0	0.00	(21,892)	(1,137,637.63)	106.5901	0.0000	106.5901
Balance @ 05/31/2020	0	0.00	43,853	2,302,701.98			
Inv From Offsite/Transfers	0	0.00	0	0.00			
Est'd Inventory Addition	0	0.00	0	0.00			
Fuel Balance @ 05/31/2020	0	0.00	43,853	2,302,701.98			
Reverse Fuel Balance	xxxxxx	0.00	xxxxxxx	(2,302,701.98)			
Fuel Bal @ Avg Price	xxxxxx	0.00	xxxxxxx	2,043,983.68			
Total @ 06/01/2020 Avg Price	0	0.00	43,853	2,043,983.68			

Weighted Avg Cost/BBL by Location #DIV/0! 52.5096

Weighted Avg Cost/BBL @ Avg Cost #DIV/0! 46.6099

**HAWAII ELECTRIC LIGHT CO., INC.**  
Estimated Weighted Average  
May 2020

PUNA INDUSTRIAL

	BBL	COST	LAND TRANSP	COST PER BARREL		TOTAL
				EXCLUDE LT	LT	
Balance at 04/30/2020	8,331	442,968.74	8,404.16			
Less: Est'd Inventory Addition	0	0.00	0.00			
Purchases: Estimate	XXXXXXXXXXXX	XXXXXXXXXXXX	XXXXXXXXXXXX			
Actual	XXXXXXXXXXXX	XXXXXXXXXXXX	XXXXXXXXXXXX			
Transfers out: Estimate	XXXXXXXXXXXX	XXXXXXXXXXXX	XXXXXXXXXXXX			
Actual	XXXXXXXXXXXX	XXXXXXXXXXXX	XXXXXXXXXXXX			
Transfers in: Estimate	(6,510)	(326,696.55)	(8,562.67)			
Actual	5,976	296,402.82	7,285.50			
Consumed: Estimate	5,531	369,878.45	7,884.34			
Actual	<u>(4,530)</u>	<u>(302,937.87)</u>	<u>(6,457.43)</u>			
Balance Per G/L 04/30/2020	<u>8,798</u>	<u>479,615.59</u>	<u>8,553.90</u>			
Purchases	XXXXXXXXXXXX	XXXXXXXXXXXX	XXXXXXXXXXXX			
Transfer out	XXXXXXXXXXXX	XXXXXXXXXXXX	XXXXXXXXXXXX			
Transfer in	8,431	367,874	11,089.38			
Consumed	(10,174)	<u>(528,701.13)</u>	(10,263.34)	51.9659	1.0088	52.9747
Balance @ 05/31/2020	<u>7,055</u>	<u>318,788.24</u>	<u>9,379.94</u>			
Inventory From Offsite/Transfers	0	0.00	0.00			
Est'd Inventory Addition	0	0.00	0.00			
Fuel Bal @ Avg Price	<u>7,055</u>	<u>318,788.24</u>	<u>9,379.94</u>		<u>1.3295</u>	
Reverse Fuel Balance	XXXXXXXXXXXX	(318,788.24)	XXXXXXXXXXXX			
Fuel Balance @ Avg Price	XXXXXXXXXXXX	328,832.80	XXXXXXXXXXXX			
Total @ 06/01/2020 Avg Price	<u>7,055</u>	<u>328,832.80</u>	<u>9,379.94</u>			
Weighted Avg Cost/BBL by Location		45.1861	1.3295			
Weighted Avg Cost/BBL @ Avg Cost		46.6099	1.3295			

**HAWAII ELECTRIC LIGHT CO., INC.**  
Estimated Weighted Average  
May 2020

KEAHOLE DIESEL

HS Diesel	BBL	GALLONS	COST EXCLUDE LT	LAND TRANSP	COST PER EXCLUD LT	BARREL LT	TOTAL
Balance at 04/30/2020	58,251.6	2,446,569.0	3,407,985.1	180,745.3			
Less: Est'd Inventory Addition	0.0	0.0	0.0	0.0			
Purchases: Estimate	(945.8)	(39,724.0)	(56,891.7)	0.0			
Actual	945.8	39,724.0	56,891.7	0.0			
Transfers out: Estimate		xxxxxxxxxxxxxxxx	xxxxxxxxxxxxxxxx	xxxxxxxxxxxxxxxx			
Actual		xxxxxxxxxxxxxxxx	xxxxxxxxxxxxxxxx	xxxxxxxxxxxxxxxx			
Transfers in: Estimate	(62,599.8)	(2,629,192.0)	(3,796,387.8)	(177,996.3)			
Actual	60,156.1	2,526,557.0	3,677,978.7	172,026.99			
Consumed: Estimate	47,211.0	1,982,861.0	3,793,419.9	150,322.94			
Actual	(49,139.5)	(2,063,857.0)	(3,886,878.2)	(140,189.3)	79.0989		
Balance Per G/L 04/30/2020	53,879.5	2,262,938	3,196,117.78	184,909.70	59.3198		
Purchases	xxxxxxxxxxxx	xxxxxxxxxxxxxxxx	xxxxxxxxxxxxxxxx	xxxxxxxxxxxxxxxx			
Transfer out	xxxxxxxxxxxx	xxxxxxxxxxxxxxxx	xxxxxxxxxxxxxxxx	xxxxxxxxxxxxxxxx			
Transfer in	48,656.0	2,043,553.0	2,339,314.9	138,348.5	48.0786		
Consumed	(56,756.1)	(2,383,756.0)	(3,375,800.1)	(176,104.88)	59.4791	3.1028	62.5819
Balance @ 05/31/2020	45,779.4	1,922,735	2,159,632.54	147,153.35	47.1748		
Inventory From Offsite/Transfers	0.0	0.0	0.0	0.00			
Est'd Inventory Addition	0.0	0	0.0	0.00			
Fuel Balance @ Avg Price	45,779.4	1,922,735	2,159,632.54	147,153.35	47.1748		
Reverse Fuel Balance	xxxxxxxxxxxx	xxxxxxxxxxxxxxxx	(2,159,632.5)	xxxxxxxxxxxxxxxx			
Fuel Balance @ Avg Price	xxxxxxxxxxxx	xxxxxxxxxxxxxxxx	2,180,631.0	xxxxxxxxxxxxxxxx			
Total @ 06/01/2020 Avg Price	45,779.4	1,922,735	2,180,631.02	147,153.35	47.6335		

Weighted Avg Cost/BBL by Location

47.1748

3.2144

Weighted Avg Cost/BBL @ Avg Cost

47.6335

3.2144



HAWAII ELECTRIC LIGHT CO., INC.  
Estimated Weighted Average  
May 2020

PUNA CT-3

HS Diesel	BBL	GALLONS	COST EXCLUD LT	LAND TRANSP	COST PER EXCL LT	BARREL LT	TOTAL
Balance at 04/30/2020	4,447.8	186,808.0	297,985.7	5,781.6			
Less: Est'd Inven Addition	0.0	0.0	0.0	0.0			
Purchases: Estimate		XXXXXXXXXXXXXXXXXX	XXXXXXXXXXXXXXXXXX	XXXXXXXXXXXXXXXXXX			
Actual		XXXXXXXXXXXXXXXXXX	XXXXXXXXXXXXXXXXXX	XXXXXXXXXXXXXXXXXX			
Transfers out: Estimate		XXXXXXXXXXXXXXXXXX	XXXXXXXXXXXXXXXXXX	XXXXXXXXXXXXXXXXXX			
Actual		XXXXXXXXXXXXXXXXXX	XXXXXXXXXXXXXXXXXX	XXXXXXXXXXXXXXXXXX			
Transfers in: Estimate	(2,387.9)	(100,291.0)	(135,692.6)	(2,647.7)			
Actual	2,276.3	95,603.0	143,691.1	2,715.2			
Consumed: Estimate	3,906.2	164,059.0	313,862.0	5,802.1			
Actual	(2,364.0)	(99,290.0)	(271,233.6)	(3,202.0)			
Balance Per G/L 04/30/2020	5,878.3	246,889	348,612.59	8,449.26			
Purchases		XXXXXXXXXXXXXXXXXX	XXXXXXXXXXXXXXXXXX	XXXXXXXXXXXXXXXXXX			
Transfer out		XXXXXXXXXXXXXXXXXX	XXXXXXXXXXXXXXXXXX	XXXXXXXXXXXXXXXXXX			
Transfer in	1,862.1	78,207.0	80,669.6	2,064.7	43.3225		
Consumed	(1,286.8)	(54,047)	(76,539.66)	(1,672.73)	59.4791	1.2999	60.7790
Balance @ 05/31/2020	6,453.5	271,049	352,742.51	8,841.20	54.6587		
Inven From Offsite/Transfers	0.0	0	0.00	0.00			
Est'd Inventory Addition	0.0	0	0.00	0.00			
Fuel Balance @ 05/31/2020	6,453.5	271,049	352,742.51	8,841.20	54.6587		
Reverse Fuel Balance		XXXXXXXXXXXXXXXXXX	(352,742.51)	XXXXXXXXXXXXXXXXXX			
Fuel Balance @ Avg Price		XXXXXXXXXXXXXXXXXX	307,404.74	XXXXXXXXXXXXXXXXXX			
Total @ 06/01/2020 Avg Price	6,453.5	271,049	307,404.74	8,841.20	47.6335		

Weighted Avg Cost/BBL by Location 54.6587 1.3700

Weighted Avg Cost/BBL @ Avg Cost 47.6335 1.3700

HAWAII ELECTRIC LIGHT CO., INC.  
Estimated Weighted Average  
May 2020

TOTAL HILO HS-DIESEL

HS Diesel	BBL	GALLONS	COST EXCLUDE LT	LAND TRANSP	COST PER EXCL LT	BARREL LT	TOTAL
Balance at 04/30/2020	1741.7	73,152	139,122	2,021			
Less: Est'd Inven Addition	0.0	0	0	0			
Purchases: Estimate		xxxxxxxxxxxx	xxxxxxxxxxxx	xxxxxxxxxxxx			
Actual		xxxxxxxxxxxx	xxxxxxxxxxxx	xxxxxxxxxxxx			
Transfers out: Estimate		xxxxxxxxxxxx	xxxxxxxxxxxx	xxxxxxxxxxxx			
Actual		xxxxxxxxxxxx	xxxxxxxxxxxx	xxxxxxxxxxxx			
Transfers in: Estimate	2.1	88.0	0.0	0.0			
Actual	-2.1	-88.0	0.0	0.0			
Consumed: Estimate	95.5	4011.0	7673.5	115.4			
Actual	-55.9	-2346.0	-41152.4	-31.0			
Balance Per G/L 04/30/2020	1781.4	74,817	105,643.22	2,105.47	59.3049		
Purchases		xxxxxxxxxxxx	xxxxxxxxxxxx	xxxxxxxxxxxx	xxxxxxxxxxxx		
Transfer out		xxxxxxxxxxxx	xxxxxxxxxxxx	xxxxxxxxxxxx	xxxxxxxxxxxx		
Transfer in	0.0	0.0	0.0	0.0	#DIV/0!		
Consumed	-44.6	-1874.0	-2653.9	-51.8	59.4791	1.1604	60.6395
Balance @ 05/31/2020	1,736.7	72,943	102,989.32	2,053.69	59.3004		
Inven From Offsite/Transfers	0.0	0.0	0.0	0.0			
Est'd Inventory Addition	0.0	0.0	0.0	0.0			
Fuel Balance @ Avg Price	1,736.7	72,943	102,989.32	2,053.69	59.3004		
Reverse Fuel Balance		xxxxxxxxxxxx	xxxxxxxxxxxx -102,989.32	xxxxxxxxxxxx			
Fuel Balance @ Avg Price		xxxxxxxxxxxx	xxxxxxxxxxxx 82,726.83	xxxxxxxxxxxx			
Total @ 06/01/2020 Avg Price	1,736.7	72,943	82,726.83	2,053.69	47.6335		

Weighted Avg Cost/BBL by Location

59.3004 1.1825

Weighted Avg Cost/BBL @ Avg Cost

47.6335 1.1825

**HAWAII ELECTRIC LIGHT CO., INC.**  
Estimated Weighted Average  
May 2020

KEAHOLE ULSD

ULSD	BBL	GALLONS	COST EXCLUDE LT	LAND TRANSP	COST PER BARREL EXCLUD LT	LT	TOTAL
Balance at 04/30/2020	2,109.7	88,606	185,959.17	7,805.12			
Less: Est'd Inventory Addition	0.0						
Purchases: Estimate	(190.0)	(7,980)	(11,411.40)	(540.25)			
Actual	188.7	7,925	11,350.00	0.00			
Transfers out: Estimate		xxxxxxxxxxxx	xxxxxxxxxxxx	xxxxxxxxxxxx			
Actual		xxxxxxxxxxxx	xxxxxxxxxxxx	xxxxxxxxxxxx			
Transfers in: Estimate		(91)	0.00	(6.16)			
Actual		(49)	0.00	536.52			
Consumed: Estimate	101.4	4,258	9,334.31	390.00			
Actual	(109.0)	(4,580)	(10,040.20)	(858.67)	92.0717		
Balance Per G/L 04/30/2020	2,097.4	88,089	185,191.89	7,326.56	88.2977		
Purchases	0.0	0	0.00	0.00	0.0000		
Estimated Purchases	0.0	0	0.00	0.00			
Transfer in	(2.1)	(90)	0.00	(6.09)	0.00		
Consumed	(32.6)	(1,370)	(2,955.91)	(120.68)	90.6191	3.6997	94.3188
Balance @ 05/31/2020	2,062.6	86,629	182,235.98	7,199.79	88.3528		
Inventory From Offsite/Transfers	0.0	0	0.00	0.00			
Est'd Inventory Addition	0.0	0	0.00	0.00			
Fuel Balance @ Avg Price	2,062.6	86,629	182,235.98	7,199.79	88.3528		
Reverse Fuel Balance	xxxxxxxxxxxx	xxxxxxxxxxxx	(182,235.98)	xxxxxxxxxxxx			
Fuel Balance @ Avg Price	xxxxxxxxxxxx	xxxxxxxxxxxx	185,559.67	xxxxxxxxxxxx			
Total @ 06/01/2020 Avg Price	2,062.6	86,629	185,559.67	7,199.79	89.9642		
Weighted Avg Cost/BBL by Location			88.3528	3.4906			
Weighted Avg Cost/BBL @ Avg Cost			89.9642	3.4906			

HAWAII ELECTRIC LIGHT CO., INC.  
Estimated Weighted Average  
May 2020

WAIMEA DIESEL

ULSD	BBL	GALLONS	COST EXCLUDE LT	LAND TRANSP	COST PER BARREL	LT	TOTAL
Balance at 04/30/2020	861.9	36,201.0	72,854.5	2,445.51			
Less: Est'd Inven Addition	0.0	0.0	0.00	0.00			
Purchases: Estimate		(7,928)	(11,354.28)	(447.14)			
Actual		7,928.0	11,354.3	0.00			
Transfers out: Estimate		xxxxxxxxxxxx	xxxxxxxxxxxx	xxxxxxxxxxxx			
Actual		xxxxxxxxxxxx	xxxxxxxxxxxx	xxxxxxxxxxxx			
Transfers in: Estimate	(0.5)	(20)	0.00	0.00			
Actual	1.0	40	0.00	447.14			
Consumed: Estimate	177.8	7,466	16,366.84	528.34			
Actual	(117.4)	(4,931)	(10,809.65)	(304.55)			
Balance Per G/L 04/30/2020	922.8	38,756	78,411.72	2,669.29	84.9750		
ULSD Purchases	0.0	0	0.00	0.00	#DIV/0!		
Estimated Purchases	-	0	0.00	0.00			
Transfer in	xxxxxxxxxxxx	9	0.00	0.00	#DIV/0!		
Consumed	(45.6)	(1,914)	(4,129.64)	(129.30)	90.6191	2.8372	93.4563
Balance @ 05/31/2020	877.4	36,851	74,282.08	2,540.00	84.6611		
Inven From Offsite/Transfers	0.0	0	0.00	0.00			
Est'd Inventory Addition	0.0	0	0.00	0.00			
Fuel Balance @ Avg Price	877.4	36,851	74,282.08	2,540.00	84.6611		
Reverse Fuel Balance	xxxxxxxxxxxx	xxxxxxxxxxxx	(74,282.08)	xxxxxxxxxxxx			
Fuel Balance @ Avg Price	xxxxxxxxxxxx	xxxxxxxxxxxx	78,934.99	xxxxxxxxxxxx			
Total @ 06/01/2020 Avg Price	877.4	36,851	78,934.99	2,540.00	89.9642		

Weighted Avg Cost/BBL by Location

84.6611 2.8949

Weighted Avg Cost/BBL @ Avg Cost

89.9642 2.8949

HAWAII ELECTRIC LIGHT CO., INC.  
Estimated Weighted Average  
May 2020

KANOELEHUA DIESEL

ULSD	BBL	GALLONS	COST EXCLUDE LT	LAND TRANSP		
Balance at 04/30/2020	582.4	24,460.0	61,721.7	602.2		
Less: Est'd Inventory Addition	0.0	0	0.00	0.00		
Purchases: Estimate	0.0	0	0.00	0.00		
Actual	0.0	0	0.00	0.00		
Transfers out: Estimate		x	x	x		
Actual		x	x	x		
Transfers in: Estimate		0	0.00	0.00		
Actual		0	0.00	0.00		
Consumed: Estimate	97.9	4,110	967.04	26.58		
Actual	(55.5)	(2,329)	(5,105.59)	(68.48)		
Balance Per G/L 04/30/2020	624.8	26,241	57,583.10	560.27		
ULSD Purchases	0	0	0.00	0.00	#DIV/0!	
Estimated Purchases	0	-	-	-		
Transfer in	0	0	0.00	0.00		
Consumed	(66.2)	(2,781)	(967.04)	(26.58)	90.61909219	1.0340
Balance @ 05/31/2020	558.6	23,460	56,616.06	533.69		
Inventory From Offsite/Transfers	0.0	0	0.00	0.00		
Est'd Inventory Addition	0.0	0	0.00	0.00		
Fuel Balance @ Avg Price	558.6	23,460	56,616.06	533.69		
Reverse Fuel Balance	x	x	(56,616.06)	x		
Fuel Balance @ Avg Price	x	x	50,251.42	x		
Total @ 06/01/2020 Avg Price	558.6	23,460	50,251.42	533.69		
Weighted Avg Cost/BBL by Location			101.3587	0.9554		
Weighted Avg Cost/BBL @ Avg Cost			89.9642	0.9554		

**HAWAII ELECTRIC LIGHT CO., INC.**  
Estimated Weighted Average  
May 2020

DISPERSED GENERATION

	BBL	GALLONS	COST	COST/BBL
Balance at 04/30/2020	119.7	5,026	12,366.82	
Less: Est'd Inven Addition	0.0	XXXXXXXXXX	XXXXXXXXXX	
Purchases: Estimate	0.0	0	0.00	
Actual	0.0	0	0.00	
Consumed: Estimate	19.3	810	1,775.67	
Actual	(12.5)	(527)	(1,155.28)	
	XXXXXXXXXX	XXXXXXXXXX	XXXXXXXXXX	
	XXXXXXXXXX	XXXXXXXXXX	XXXXXXXXXX	
	XXXXXXXXXX	XXXXXXXXXX	XXXXXXXXXX	
	XXXXXXXXXX	XXXXXXXXXX	XXXXXXXXXX	
Balance Per G/L 04/30/2020	126.40	5,309	12,987.21	102.7430
Purchases	0.0	0	0.00	0.0000
Transfer out	XXXXXXXXXX	XXXXXXXXXX	XXXXXXXXXX	
Transfer in	XXXXXXXXXX	XXXXXXXXXX	XXXXXXXXXX	
Consumed	(5.1)	(215)	(463.88)	90.6191
Balance @ 05/31/2020	121.3	5,094	12,523.33	103.2548
Est'd Inventory Addition	0.0	0	0.00	
Fuel Balance @ 05/31/2020	121.3	5,094	12,523.33	
Reverse Fuel Balance	XXXXXXXXXX	XXXXXXXXXX	(12,523.33)	xxxx
Fuel Balance @ Avg Price	XXXXXXXXXX	XXXXXXXXXX	10,911.37	xxxx
Total @ 06/01/2020 Avg Price	121.3	5,094	10,911.37	89.9642



**Hawaii Electric Light Company, Inc.**  
PURCHASED POWER PRICES FOR June 1, 2020

		<u>June 1, 2020</u> <u>(¢/kWh)</u>	<u>Floor Rates</u> <u>(¢/kWh)</u>
PGV (25 MW)	- on peak	9.760	6.560
PGV (22 MW)	- off peak	8.879	5.430
WAILUKU HYDRO	- on peak	9.760	7.240
	off peak	8.879	5.970
Other: (<100 KW)	Sch Q Rate	9.060	
		<u>June 1, 2020</u> <u>(¢/kWh)</u>	<u>Floor Rates</u> <u>(¢/kWh)</u>
HEP		9.725	
PGV Addtl 5 MW	- on peak	13.250	0.0000
	- off peak	13.250	0.0000
PGV Addtl 8 MW	- on peak	10.100	0.0000
	- off peak	6.740	0.0000



**Hawaii Electric Light Company, Inc.**  
**Energy Cost Reconciliation Adjustment**  
June 1, 2020

<u>Line No.</u>	<u>Description</u>	<u>Amount</u>
1	Amount to be (returned) or collected	(\$2,567,100)
2	Monthly Amount ( $\frac{1}{3}$ x Line 1)	(\$855,700)
3	Revenue Tax Divisor	0.91115
4	Total (Line 2 / Line 3)	(\$939,143)
5	Estimated MWh Sales (June 1, 2020)	74,186 mwh
6	Adjustment (Line 4 / Line 5)	(1.266) ¢/kwh

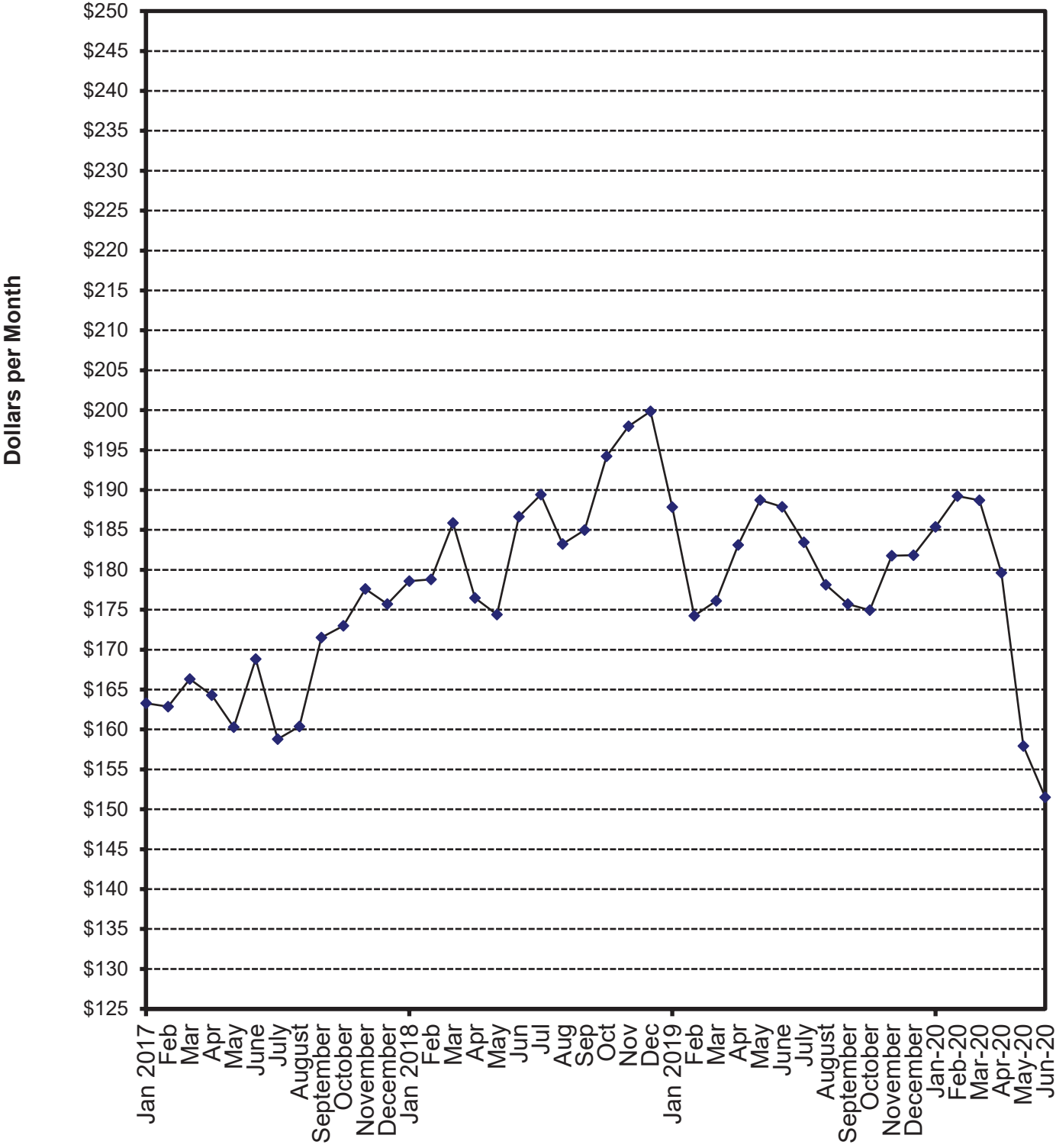
**HAWAII ELECTRIC LIGHT COMPANY, INC.**  
2020 Cumulative Reconciliation Balance

<u>Month</u>	(1) <u>YTD FOA Reconciliation</u>	<u>Qtr</u>	(2) <u>FOA Rec Adjust Variance</u>	(3) <u>FOA Rec Less Variance</u>	(4) <u>Try to Collect</u>	(5) <u>Actual Collect</u>	(6) <u>Month-end Cumulative Balance</u>
January 19					(305,667)	(300,243)	32,773
February	2,598,900	[4]	(8,054)	2,606,954	(866,300)	(800,636)	1,839,091
March					(866,300)	(825,091)	1,014,000
April					(866,300)	(829,484)	184,516
May	1,745,900	(1)	112,297	1,633,603	(581,967)	(565,304)	1,252,815
June					(581,967)	(585,631)	667,184
July					(581,967)	(586,240)	80,944
August	3,027,900	[2]	49,815	2,978,085	(1,009,300)	(1,025,775)	2,033,254
September					(1,009,300)	(1,026,151)	1,007,103
October					(1,009,300)	(1,007,209)	(106)
November	1,927,900	[3]	(37,599)	1,965,499	(642,633)	(651,308)	1,314,085
December 19					(642,633)	(646,001)	668,084
January 20					(642,633)	(673,144)	(5,060)
February	141,300	[4]	(9,952)	151,252	(47,100)	(45,511)	100,681
March					(47,100)	(46,650)	54,031
April					(47,100)	(40,115)	13,916
May	2,567,100	(1)	(28,472)	2,595,572	(855,700)		
June					(855,700)		

NOTES:

- Col(1): Quarterly FOA reconciliation amounts. (Refer to Attachment 6)  
A positive number is an over-collection. A negative number is an under-collection.
- Col(2): FOA reconciliation adjustment variance accumulated during the last three months, starting with the fourth prior month; the difference between the estimated recorded sales used to derive the \$/kwh adjustment and the actual recorded sales.  
(Col(5)-Col(4))
- Col(3): FOA reconciliation generated in the current quarter. The YTD FOA reconciliation difference minus the adjustment variance. Col(1)-Col(2)
- Col(4): Amount that the FOA reconciliation adjustment is trying to collect. (Col(1) \* 1/3)
- Col(5): Actual collected amount. (recorded sales \* \$/kwh adjustment/1.09751)
- Col(6): Cumulative balance of the FOA reconciliation (Previous balance + Col(3) + Col(5))

# Hawaii Electric Light Company, Inc. Residential Bill at 500 KWH/Month Consumption



**HAWAII ELECTRIC LIGHT COMPANY, INC.  
FUEL OIL ADJUSTMENT FACTOR DATA**

<u>EFFECTIVE DATE</u>	<u>FUEL FACTOR</u> <u>CENTS / KWH</u>		<u>RESIDENTIAL BILL (\$)</u>	
	<u>RESIDENTIAL &amp; COMMERCIAL</u>	<u>@ 500 KWH</u>	<u>@ 600 KWH</u>	
January 1, 2017	-2.842	163.27	195.58	
February 1, 2017	-2.956	162.87	195.09	
March 1, 2017	-2.274	166.31	199.24	
April 1, 2017	-2.425	164.31	196.83	
May 1, 2017	-3.035	160.30	192.02	
June 1, 2017	-1.343	168.82	202.25	
July 1, 2017	-3.220	158.79	190.22	
August 1, 2017	-3.643	160.39	192.15	
September 1, 2017	-2.447	171.52	205.50	
October 1, 2017	-2.131	172.97	207.23	
November 1, 2017	-0.885	177.60	212.80	
December 1, 2017	-1.405	175.02	209.69	
January 1, 2018	-0.723	178.59	213.95	
February 1, 2018	-0.579	178.81	214.22	
March 1, 2018	0.816	185.87	222.68	
April 1, 2018	-0.912	176.46	211.39	
May 1, 2018	-0.452	174.38	208.90	
June 1, 2018	2.301	186.65	223.63	
July 1, 2018	2.831	189.43	226.97	
August 1, 2018	1.665	183.25	219.55	
September 1, 2018	2.027	184.98	221.62	
October 1, 2018	8.359	194.21	232.50	
November 1, 2018	8.913	197.99	237.04	
December 1, 2018	9.292	199.86	239.29	
January 1, 2019	6.867	187.86	224.86	
February 1, 2019	14.631	174.25	208.53	
March 1, 2019	14.976	176.1	210.75	
April 1, 2019	16.469	183.12	219.17	
May 1, 2019	17.396	188.74	225.93	
June 1, 2019	17.318	187.89	224.90	
July 1, 2019	16.450	183.46	219.63	
August 1, 2019	15.331	178.14	213.25	
September 1, 2019	14.845	175.70	210.32	
October 1, 2019	14.692	174.93	209.40	
November 1, 2019	16.302	181.76	217.59	
December 1, 2019	16.288	181.82	217.67	
January 1, 2020	16.768	185.37	221.88	
February 1, 2020	17.547	189.22	226.49	
March 1, 2020	17.424	188.72	225.90	
April 1, 2020	15.644	179.61	214.96	
May 1, 2020	11.215	157.94	188.96	
June 1, 2020	10.575	151.51	181.25	

**HAWAII ELECTRIC LIGHT COMPANY, INC.  
RESIDENTIAL SURCHARGE DATA**

EFFECTIVE DATE	DESCRIPTION OF SURCHARGE	RATE
1/1/2018 - 1/31/18	PURCHASED POWER ADJUSTMENT CLAUSE	2.4105 CENTS/KWH
1/1/18-6/30/18	GREEN INFRASTRUCTURE FEE	1.3400 DOLLARS/MONTH
2/1/18-2/28/18	PURCHASED POWER ADJUSTMENT CLAUSE	2.3101 CENTS/KWH
3/1/18 - 3/31/18	PURCHASED POWER ADJUSTMENT CLAUSE	2.3258 CENTS/KWH
04/1/18-04/30/18	PURCHASED POWER ADJUSTMENT CLAUSE	2.3184 CENTS/KWH
04/1/18-04/30/18	SOLARSAVER ADJUSTMENT	-0.1464 CENTS/KWH
05/1/18-05/31/18	PURCHASED POWER ADJUSTMENT CLAUSE	2.3395 CENTS/KWH
05/1/18-05/31/18	SOLARSAVER ADJUSTMENT	0.0000 CENTS/KWH
5/1/2018	INTERIM RATE INCREASE 2016	2.5000 PERCENT ON BASE
06/01/18-06/30/18	PURCHASED POWER ADJUSTMENT CLAUSE	1.6729 CENTS/KWH
6/1/2018	RBA RATE ADJUSTMENT	1.0006 CENTS/KWH
07/01/18-07/31/18	PURCHASED POWER ADJUSTMENT CLAUSE	1.6811 CENTS/KWH
7/1/2018- 12/31/18	GREEN INFRASTRUCTURE FEE	1.2100 DOLLARS/MONTH
7/1/2018	RESIDENTIAL PBF SURCHARGE ADJUSTMENT	0.4658 CENTS/KWH
08/01/18-08/31/18	PURCHASED POWER ADJUSTMENT CLAUSE	1.6110 CENTS/KWH
09/01/18-09/30/18	PURCHASED POWER ADJUSTMENT CLAUSE	1.5950 CENTS/KWH
10/01/18-10/31/18	PURCHASED POWER ADJUSTMENT CLAUSE	1.8602 CENTS/KWH
10/1/2018	INTERIM RATE INCREASE 2016	0.0000 PERCENT ON BASE
10/1/2018	FINAL RATE INCREASE (TY 2016) 0.53% EFFECTIVE 10/01/18, DOCKET NO. 2015-0170	
11/1/2018-11/30/18	PURCHASED POWER ADJUSTMENT CLAUSE	2.0617 CENTS/KWH
12/1/2018-12/31/18	PURCHASED POWER ADJUSTMENT CLAUSE	2.0577 CENTS/KWH
1/1/2019-1/31/19	PURCHASED POWER ADJUSTMENT CLAUSE	2.0548 CENTS/KWH
1/1/2019- 06/30/19	GREEN INFRASTRUCTURE FEE	1.3500 DOLLARS/MONTH
2/1/2019-2/28/19	PURCHASED POWER ADJUSTMENT CLAUSE	1.8113 CENTS/KWH
3/1/2019-3/31/19	PURCHASED POWER ADJUSTMENT CLAUSE	1.8372 CENTS/KWH
04/1/2019-4/30/19	PURCHASED POWER ADJUSTMENT CLAUSE	1.8247 CENTS/KWH
04/1/19-04/30/19	SOLARSAVER ADJUSTMENT	-0.0768 CENTS/KWH
05/01/2019-5/31/19	PURCHASED POWER ADJUSTMENT CLAUSE	1.9460 CENTS/KWH
05/01/2019- 03/31/2020	SOLARSAVER ADJUSTMENT	0.0000 CENTS/KWH
06/01/2019-6/30/19	PURCHASED POWER ADJUSTMENT CLAUSE	1.9474 CENTS/KWH
6/1/2019-12/31/2019	RBA RATE ADJUSTMENT	0.9069 CENTS/KWH
7/01/2019-7/31/19	PURCHASED POWER ADJUSTMENT CLAUSE	1.9539 CENTS/KWH
7/1/2019-12/31/2019	GREEN INFRASTRUCTURE FEE	1.1700 DOLLARS/MONTH
7/1/2019-12/31/2019	RESIDENTIAL PBF SURCHARGE ADJUSTMENT	0.4775 CENTS/KWH
8/1/2019-8/31/2019	PURCHASED POWER ADJUSTMENT CLAUSE	2.0075 CENTS/KWH
9/1/2019-9/30/2019	PURCHASED POWER ADJUSTMENT CLAUSE	2.0060 CENTS/KWH
10/1/2019-10/31/2019	PURCHASED POWER ADJUSTMENT CLAUSE	2.0069 CENTS/KWH
11/1/2019-11/30/2019	PURCHASED POWER ADJUSTMENT CLAUSE	1.7616 CENTS/KWH
12/1/2019-12/31/2019	PURCHASED POWER ADJUSTMENT CLAUSE	1.7884 CENTS/KWH
1/1/2020-1/31/2020	PURCHASED POWER ADJUSTMENT CLAUSE	1.7730 CENTS/KWH
<b>1/1/2020</b>	<b>GREEN INFRASTRUCTURE FEE</b>	<b>1.2500 DOLLARS/MONTH</b>
1/1/2020- 05/31/2020	RBA RATE ADJUSTMENT	0.1852 CENTS/KWH
<b>1/1/2020</b>	<b>INTERIM RATE ADJUSTMENT 2019</b>	<b>4.0900 PERCENT ON BASE</b>
<b>1/1/2020</b>	<b>RESIDENTIAL PBF SURCHARGE ADJUSTMENT</b>	<b>0.7437 CENTS/KWH</b>
2/1/2020- 2/29/2020	PURCHASED POWER ADJUSTMENT CLAUSE	1.7631 CENTS/KWH
3/1/2020- 3/31/2020	PURCHASED POWER ADJUSTMENT CLAUSE	1.7883 CENTS/KWH
4/1/2020- 4/30/2020	PURCHASED POWER ADJUSTMENT CLAUSE	1.7717 CENTS/KWH
4/1/2020- 4/30/2020	SOLARSAVER ADJUSTMENT	-0.0267 CENTS/KWH
05/01/2020-5/31/2020	PURCHASED POWER ADJUSTMENT CLAUSE	1.8396 CENTS/KWH
<b>5/1/2020</b>	<b>SOLARSAVER ADJUSTMENT</b>	<b>0.0000 CENTS/KWH</b>
<b>06/01/2020-6/30/2020</b>	<b>PURCHASED POWER ADJUSTMENT CLAUSE</b>	<b>1.8413 CENTS/KWH</b>
<b>6/1/2020</b>	<b>RBA RATE ADJUSTMENT</b>	<b>-0.4623 CENTS/KWH</b>

\*\*Base charges include customer charge, demand charge, energy charge, power factor adjustment, voltage discount, and minimum charge.

Calculations of the Average Residential Customer Bill

	Rate		Charge (\$) at 500 Kwh			
	5/01/20	6/01/20	5/01/20	6/01/20	Difference	
<b>Base Rates</b>	effective date:	2/1/2019	2/1/2019			
Base Fuel Energy Charge	¢/kwh	-	-	\$0.00	\$0.00	\$0.00
Non-Fuel Energy Charge	¢/kwh			\$71.85	\$71.85	\$0.00
First 300 kWh per month	¢/kwh	13.0289	13.0289	\$39.09	\$39.09	\$0.00
Next 700 kWh per month	¢/kwh	16.3807	16.3807	\$32.76	\$32.76	\$0.00
Customer Charge	\$	11.50	11.50	\$11.50	\$11.50	\$0.00
<b>Total Base Charges</b>				\$83.35	\$83.35	\$0.00
<b>Interim Rate Adjustment 2019 TY</b>	% on base	4.0900%	4.0900%	\$3.41	\$3.41	\$0.00
<b>RBA Rate Adjustment</b>	¢/kwh	0.1852	(0.4623)	\$0.93	-\$2.31	-\$3.24
<b>Purchased Power Adj. Clause</b>	¢/kwh	1.8396	1.8413	\$9.20	\$9.21	\$0.01
<b>PBF Surcharge</b>	¢/kwh	0.7437	0.7437	\$3.72	\$3.72	\$0.00
<b>DSM Adjustment</b>	¢/kwh	0.0000	0.0000	\$0.00	\$0.00	\$0.00
<b>SolarSaver Adjustment</b>	¢/kwh	0.0000	0.0000	\$0.00	\$0.00	\$0.00
<b>Energy Cost Recovery</b>	¢/kwh	11.2150	10.5750	\$56.08	\$52.88	-\$3.20
<b>Green Infrastructure Fee</b>	\$	1.2500	1.2500	\$1.25	\$1.25	\$0.00
<b>Avg Residential Bill at 500 kwh</b>				\$157.94	\$151.51	

Increase (Decrease -)	-\$6.43
% Change	-4.07%

	Rate		Charge (\$) at 600 Kwh			
	5/01/20	6/01/20	5/01/20	6/01/20	Difference	
<b>Base Rates</b>	effective date:	2/1/2019	2/1/2019			
Base Fuel/Energy Charge	¢/kwh	-	-	\$0.00	\$0.00	\$0.00
Non-Fuel Energy Charge	¢/kwh			\$88.23	\$88.23	\$0.00
First 300 kWh per month	¢/kwh	13.0289	13.0289	\$39.09	\$39.09	\$0.00
Next 700 kWh per month	¢/kwh	16.3807	16.3807	\$49.14	\$49.14	\$0.00
Customer Charge	\$	11.50	11.50	\$11.50	\$11.50	\$0.00
<b>Total Base Charges</b>				\$99.73	\$99.73	\$0.00
<b>Interim Rate Adjustment 2019 TY</b>	% on base	4.0900%	4.0900%	\$4.08	\$4.08	\$0.00
<b>RBA Rate Adjustment</b>	¢/kwh	0.1852	(0.4623)	\$1.11	-\$2.77	-\$3.88
<b>Purchased Power Adj. Clause</b>	¢/kwh	1.8396	1.8413	\$11.04	\$11.05	\$0.01
<b>PBF Surcharge</b>	¢/kwh	0.7437	0.7437	\$4.46	\$4.46	\$0.00
<b>DSM Adjustment</b>	¢/kwh	0.0000	0.0000	\$0.00	\$0.00	\$0.00
<b>SolarSaver Adjustment</b>	¢/kwh	0.0000	0.0000	\$0.00	\$0.00	\$0.00
<b>Energy Cost Recovery</b>	¢/kwh	11.2150	10.5750	\$67.29	\$63.45	-\$3.84
<b>Green Infrastructure Fee</b>	\$	1.2500	1.2500	\$1.25	\$1.25	\$0.00
<b>Avg Residential Bill at 600 kwh</b>				\$188.96	\$181.25	

Increase (Decrease -)	-\$7.71
% Change	-4.08%

---

**From:** puc@hawaii.gov  
**Sent:** Friday, May 29, 2020 9:40 AM  
**To:** Watanabe, Blaine  
**Subject:** Hawaii PUC eFiling Confirmation of Filing

**[This email is coming from an EXTERNAL source. Please use caution when opening attachments or links in suspicious email.]**

Your eFile document has been filed with the Hawaii Public Utilities commission on 2020 May 29 AM 09:39. The mere fact of filing shall not waive any failure to comply with Hawaii Administrative Rules Chapter 6-61, Rules of Practice and Procedure Before the Public Utilities Commission, or any other application requirements. Your confirmation number is BLAI20093957256. If you have received this email in error please notify the Hawaii Public Utilities Commission by phone at 808 586-2020 or email at hawaii.puc@hawaii.gov.