



February 24, 2023

The Honorable Chair and Members
of the Hawai'i Public Utilities Commission
Kekuanao'a Building, First Floor
465 South King Street
Honolulu, Hawai'i 96813

Dear Commissioners:

Subject: Hawai'i Electric Light Energy Cost Recovery Factor for March 2023

Hawai'i Electric Light Company, Inc.'s ("Hawai'i Electric Light" or "Company") Energy Cost Recovery factor for March 2023 is 25.651 cents per kilowatt-hour ("kWh"), an increase of 0.733 cents per kWh from last month. A residential customer consuming 500 kWh of electricity will be paying \$235.76, an increase of \$3.95 compared to rates effective February 1, 2023. The increase in the residential bill is due to the increase in the Energy Cost Recovery Factor (+\$3.67) and increase in the Purchased Power Adjustment Clause rate (+\$0.28).

Hawai'i Electric Light's fuel composite cost of generation increased 65.73 cents per million BTU to 2,012.10 cents per million BTU. The composite cost of distributed generation decreased (-0.177) cents per kWh to 27.501 cents per kWh. The composite cost of purchased energy increased 0.358 cents per kWh to 18.170 cents per kWh.

The attached sheets set forth the energy cost recovery factor in cents per kWh for each rate schedule that is applicable for pro rata use beginning March 1, 2023.

Very truly yours,

/s/ Dean K. Matsuura

Dean K. Matsuura
Director, Regulatory Rate Proceedings

Attachments

cc: Division of Consumer Advocacy

HAWAII ELECTRIC LIGHT COMPANY, INC.

ENERGY COST RECOVERY FACTOREFFECTIVE DATES

	<u>2/01/23</u>	<u>3/01/23</u>	<u>Change</u>
--	----------------	----------------	---------------

Composite Cost

Generation, ¢/mmbtu	1,946.37	2,012.10	65.73
Dispersed Generation Energy, ¢/kWh	27.678	27.501	(0.177)
Purchased Energy, ¢/kWh	17.812	18.170	0.358

Residential Schedule "R"

Energy Cost Recovery - ¢/kWh	24.918	25.651	0.733
------------------------------	--------	--------	-------

Others - "G,J,P,F"

Energy Cost Recovery - ¢/kWh	24.918	25.651	0.733
------------------------------	--------	--------	-------

Residential Customer with:

500 KWH Consumption - \$/Bill	231.81	\$235.76	\$3.95
600 KWH Consumption - \$/Bill	277.63	\$282.37	\$4.74

HAWAII ELECTRIC LIGHT COMPANY, INC.
ENERGY COST RECOVERY (ECR) FILING

ENERGY COST RECOVERY (ECR) FILING - March 1, 2023 (Page 1 of 2)

<u>Line</u>		
1	Effective Date	March 1, 2023
2	Supercedes Factors of	February 1, 2023

GENERATION COMPONENT

CENTRAL STATION WITH WIND/HYDRO COMPONENT			
FUEL PRICES, ¢/mmbtu			
3			
4	Hill Industrial		1,552.84
5	Puna Industrial		1,577.40
6	Keahole Diesel		2,589.69
6a	Keahole ULSD		2,712.93
7	Waimea ULSD Diesel		2,696.44
8	Hilo Diesel		2,536.90
8a	Hilo (Kanoelehua) ULSD Diesel ¹		2,659.26
9	Puna Diesel		2,531.43
10	Wind		0.00
11	Hydro		0.00
BTU MIX, %			
12			
13	Hill Industrial		37.985
14	Puna Industrial		11.555
15	Keahole Diesel		40.826
15a	Keahole ULSD		0.292
16	Waimea ULSD Diesel		0.294
17	Hilo Diesel		0.273
17a	Hilo (Kanoelehua) ULSD Diesel ¹		0.364
18	Puna Diesel		5.937
19	Wind		0.000
20	Hydro		2.475
			100.0000
21	COMPOSITE COST OF GENERATION, CENTRAL STATION + WIND/HYDRO ¢/mmbtu		2,012.10
22	% Input to System kWh Mix		61.176
EFFICIENCY FACTOR, mmbtu/kWh			
	(A)	(B)	(C) (D)
			Percent of
			Centri Stn +
			Wind/Hydro
			Eff Factor
	<u>Fuel Type</u>	<u>mmbtu/kwh</u>	<u>Wind/Hydro</u>
23	Industrial	0.014683	49.539
24	Diesel	0.011226	47.986
25	Other	0.012514	2.475
			100.0000
(Lines 23, 24, 25): Col(B) x Col(C) = Col(D)			
26	Weighted Efficiency Factor, mmbtu/kWh [Lines 23(D) + 24(D) + 25(D)]		0.0129710
27	WEIGHTED COMPOSITE CENTRAL STATION + WIND/HYDRO GENERATION COST, ¢/kWh (Lines (21 x 22 x 26))		15.96629
28	BASE CENTRAL STATION + WIND/HYDRO GENERATION COST, ¢/mmbtu		0.00
29	Base % Input to Sys kWh Mix		0.00
30	Efficiency Factor, mmbtu/kwh		0.000000
31	WEIGHTED BASE CENTRAL STATION + WIND/HYDRO GENERATION COST ¢/kWh (Lines (28 x 29 x 30))		0.00000
32	COST LESS BASE (Line 27 - 31)		15.96629
33	Revenue Tax Req Multiplier		1.0975
34	CENTRAL STATION + WIND/HYDRO GENERATION FACTOR, ¢/kWh (Line (32 x 33))		17.52300

DG ENERGY COMPONENT		
35	COMPOSITE COST OF DG ENERGY, ¢/kWh	27.501
36	% Input to System kWh Mix	0.107
37	WEIGHTED COMPOSITE DG ENERGY COST, ¢/kWh (Lines 35 x 36)	0.02943
38	BASE DG ENERGY COMPOSITE COST	0.000
39	Base % Input to System kWh Mix	0.00
40	WEIGHTED BASE DG ENERGY COST, ¢/kWh (Line 38 x 39)	0.00000
41	Cost Less Base (Line 37 - 40)	0.02943
42	Loss Factor	1.062
43	Revenue Tax Req Multiplier	1.0975
44	DG FACTOR, ¢/kWh (Line 41 x 42 x 43)	0.03430

SUMMARY OF		
TOTAL GENERATION FACTOR, ¢/kWh		
45	Cntrl Stn+Wind/Hydro (line 34)	17.52300
46	DG (line 44)	0.03430
47	TOTAL GENERATION FACTOR, ¢/kWh (lines 45 + 46)	17.55730

¹ Hilo ULSD same location as Kanoelehua ULSD

Hawaii Electric Light Company, Inc.
FUEL OIL INVENTORY PRICES FOR March 1, 2023

INDUSTRIAL FUEL COSTS:

	<u>HILO</u>	<u>PUNA</u>
Average Industrial Fuel Cost - \$/BBL	97.8288	97.8288
Land Transportation Cost - \$/BBL	--	1.5473
Industrial Costs For Filing - \$/BBL	97.8288	99.3761
Conversion Factors - mmbtu/BBL	6.30	6.30
Industrial Costs For Filing - ¢/mmbtu	<u>1,552.84</u>	<u>1,577.40</u>

DIESEL FUEL COSTS:

	<u>KEAHOLE</u>	<u>PUNA CT-3</u>	<u>HILO</u>
Average Diesel Fuel Cost - \$/BBL	147.1077	147.1077	147.1077
Land Transportation Cost - \$/BBL	4.6483	1.2340	1.5546
Diesel Costs For Filing - \$/BBL	151.7560	148.3417	148.6623
Conversion Factors - mmbtu/BBL	5.86	5.86	5.86
Diesel Costs For Filing - ¢/mmbtu	<u>2,589.69</u>	<u>2,531.43</u>	<u>2,536.90</u>

ULSD FUEL COSTS:

	<u>KEAHOLE</u>	<u>WAIMEA</u>	<u>HILO</u>	<u>DISPERSED GENERATION</u>
Average ULSD Fuel Cost - \$/BBL	150.8460	150.8460	150.8460	150.8460
Land Transportation Cost - \$/BBL	4.6051	3.6598	1.5296	-
ULSD Costs For Filing - \$/BBL	155.4511	154.5058	152.3756	150.8460
Conversion Factors - mmbtu/BBL	5.73	5.73	5.73	5.73
ULSD Costs For Filing - ¢/mmbtu	<u>2,712.93</u>	<u>2,696.44</u>	<u>2,659.26</u>	<u>2,632.57</u>

Dispersed Generation, cents per kWh

	<u>COMPOSITE COST OF DISP. GEN.</u>
BBIs Fuel:	184.5882
\$/BBI Inv Cost:	150.8460
Fuel \$ (Prod Sim Consumption x Unit Cost)	27,844.40
Net kWh (from Prod Sim)	101,250
cents/kWh:	27.501

HAWAII ELECTRIC LIGHT CO., INC.
Estimated Weighted Average
March 2023

	SHIPMAN INDUSTRIAL		HILL INDUSTRIAL		COST PER BARREL		
	BBL	COST	BBL	COST	EXCL LT	LT Total	
Balance at 01/31/2023	0	0.00	42,839	4,013,430.07			
Less: Est'd Inventory Addn			1,887	165,040.30			
Purchases: Estimate	xxxxxx	xxxxxxxxxxxxxxxxxxxx	xxxxxxxxxx	xxxxxxxxxxxxxxxxxxxx			
Actual	xxxxxx	xxxxxxxxxxxxxxxxxxxx	xxxxxxxxxx	xxxxxxxxxxxxxxxxxxxx			
Transfers out: Estimate	xxxxxx	xxxxxxxxxxxxxxxxxxxx	xxxxxxxxxx	xxxxxxxxxxxxxxxxxxxx			
Actual	xxxxxx	xxxxxxxxxxxxxxxxxxxx	xxxxxxxxxx	xxxxxxxxxxxxxxxxxxxx			
Transfers in: Estimate	0	0.00	(47,689)	(4,357,219.21)			
Actual	0	0.00	37,316	3,416,147.80			
Consumed: Estimate	0	0.00	28,630	2,460,656.43			
Actual	0	0.00	(25,705)	(2,216,572.29)			
Balance Per G/L 01/31/2023	0	0.00	37,278	3,481,483.10			
Purchases	xxxxxx	xxxxxxxxxxxxxxxxxxxx	xxxxxxxxxx	xxxxxxxxxxxxxxxxxxxx			
Transfer out	xxxxxx	xxxxxxxxxxxxxxxxxxxx	xxxxxxxxxx	xxxxxxxxxxxxxxxxxxxx			
Transfer in	0	0.00	13,020	1,236,946.27			
Consumed	0	0.00	(20,206)	(1,875,427.97)	106.5901	0.0000	106.5901
Balance @ 02/28/2023	0	0.00	#####	2,843,001.40			
Inv From Offsite/Transfers	0	0.00	0	0.00			
Est'd Inventory Addition	0	0.00	0	0.00			
Fuel Balance @ 02/28/2023	0	0.00	30,092	2,843,001.40			
Reverse Fuel Balance	xxxxxx	0.00	xxxxxx	(2,843,001.40)			
Fuel Bal @ Avg Price	xxxxxx	0.00	xxxxxx	2,943,863.45			
Total @ 03/01/2023 Avg Price	0	0.00	30,092	2,943,863.45			

Weighted Avg Cost/BBL by Location #DIV/0! 94.4770
 Weighted Avg Cost/BBL @ Avg Cost #DIV/0! 97.8288

HAWAII ELECTRIC LIGHT CO., INC.
Estimated Weighted Average
March 2023

PUNA INDUSTRIAL

	BBL	COST	LAND TRANSP	COST PER BARREL		TOTAL
				EXCLUDE LT	LT	
Balance at 01/31/2023	9,822	874,321.60	15,197.79			
Less: Est'd Inventory Addition	0	0.00	0.00			
Purchases: Estimate	xxxxxxxxxxxx	xxxxxxxxxxxx	xxxxxxxxxxxx			
Actual	xxxxxxxxxxxx	xxxxxxxxxxxx	xxxxxxxxxxxx			
Transfers out: Estimate	xxxxxxxxxxxx	xxxxxxxxxxxx	xxxxxxxxxxxx			
Actual	xxxxxxxxxxxx	xxxxxxxxxxxx	xxxxxxxxxxxx			
Transfers in: Estimate	0	0.00	0.00			
Actual	0	0.00	0.00			
Consumed: Estimate	0	0.00	0.00			
Actual	0	42,978.87	0.00			
Balance Per G/L 01/31/2023	9,822	917,300.47	15,197.79			
Purchases	xxxxxxxxxxxx	xxxxxxxxxxxx	xxxxxxxxxxxx			
Transfer out	xxxxxxxxxxxx	xxxxxxxxxxxx	xxxxxxxxxxxx			
Transfer in	0	0	0.00			
Consumed	0	0.00	0.00	92.8154	1.5473	94.3627
Balance @ 02/28/2023	9,822	917,300.47	15,197.79			
Inventory From Offsite/Transfers	0	0.00	0.00			
Est'd Inventory Addition	0	0.00	0.00			
Fuel Bal @ Avg Price	9,822	917,300.47	15,197.79		1.5473	
Reverse Fuel Balance	xxxxxxxxxxxx	(917,300.47)	xxxxxxxxxxxx			
Fuel Balance @ Avg Price	xxxxxxxxxxxx	960,874.21	xxxxxxxxxxxx			
Total @ 03/01/2023 Avg Price	9,822	960,874.21	15,197.79			

Weighted Avg Cost/BBL by Location

93.3924

1.5473

Weighted Avg Cost/BBL @ Avg Cost

97.8288

1.5473

HAWAII ELECTRIC LIGHT CO., INC.
Estimated Weighted Average
March 2023

KEAHOLE DIESEL

HS Diesel	BBL	GALLONS	COST EXCLUDE LT	LAND TRANSP	COST PER EXCLUD LT	BARREL LT	TOTAL
Balance at 01/31/2023	60,462.7	2,539,434.0	8,868,184.2	264,774.4			
Less: Est'd Inventory Addition	0.0	0.0	0.0	0.0			
Purchases: Estimate	0.0	0.0	0.0	0.0			
Actual	0.0	0.0	0.0	0.0			
Transfers out: Estimate		xxxxxxxxxxxxxxx	xxxxxxxxxxxxxxx	xxxxxxxxxxxxxxx			
Actual		xxxxxxxxxxxxxxx	xxxxxxxxxxxxxxx	xxxxxxxxxxxxxxx			
Transfers in: Estimate	(36,337.0)	(1,526,153.0)	(5,260,991.6)	(162,557.1)			
Actual	33,915.9	1,424,468.0	4,780,699.5	150,240.85			
Consumed: Estimate	29,975.7	1,258,978.0	4,436,181.1	108,764.13			
Actual	(30,319.6)	(1,273,422.0)	(4,632,211.6)	(98,561.2)	152.7796		
Balance Per G/L 01/31/2023	57,697.7	2,423,305	8,191,861.64	262,661.04	141.9789		
Purchases	xxxxxxxxxxx	xxxxxxxxxxxxxxx	xxxxxxxxxxxxxxx	xxxxxxxxxxxxxxx			
Transfer out	xxxxxxxxxxx	xxxxxxxxxxxxxxx	xxxxxxxxxxxxxxx	xxxxxxxxxxxxxxx			
Transfer in	27,100.5	1,138,223.0	4,008,133.3	121,237.0	147.8986		
Consumed	(38,152.0)	(1,602,382.0)	(5,465,870.0)	(167,071.21)	143.2658	4.3791	147.6449
Balance @ 02/28/2023	46,646.3	1,959,146	6,734,125.01	216826.83516	144.3656		
Inventory From Offsite/Transfers	0.0	0.0	0.0	0.00			
Est'd Inventory Addition	0.0	0	0.0	0.00			
Fuel Balance @ Avg Price	46,646.3	1,959,146	6,734,125.01	216,826.84	144.3656		
Reverse Fuel Balance	xxxxxxxxxxx	xxxxxxxxxxxxxxx	(6,734,125.0)	xxxxxxxxxxxxxxx			
Fuel Balance @ Avg Price	xxxxxxxxxxx	xxxxxxxxxxxxxxx	6,862,033.5	xxxxxxxxxxxxxxx			
Total @ 03/01/2023 Avg Price	46,646.3	1,959,146	6,862,033.51	216,826.84	147.1077		

Weighted Avg Cost/BBL by Location 144.3656 4.6483

Weighted Avg Cost/BBL @ Avg Cost 147.1077 4.6483

HAWAII ELECTRIC LIGHT CO., INC.
Estimated Weighted Average
March 2023

PUNA CT-3

HS Diesel	BBL	GALLONS	COST EXCLUD LT	LAND TRANSP	COST PER EXCL LT	BARREL LT	TOTAL
Balance at 01/31/2023	4,519.2	189,806.0	631,064.5	8,560.6			
Less: Est'd Inven Addition	0.0	0.0	0.0	0.0			
Purchases: Estimate		XXXXXXXXXXXXXXXXXX	XXXXXXXXXXXXXXXXXX	XXXXXXXXXXXXXXXXXX			
Actual		XXXXXXXXXXXXXXXXXX	XXXXXXXXXXXXXXXXXX	XXXXXXXXXXXXXXXXXX			
Transfers out: Estimate		XXXXXXXXXXXXXXXXXX	XXXXXXXXXXXXXXXXXX	XXXXXXXXXXXXXXXXXX			
Actual		XXXXXXXXXXXXXXXXXX	XXXXXXXXXXXXXXXXXX	XXXXXXXXXXXXXXXXXX			
Transfers in: Estimate	(6,671.8)	(280,214.0)	(946,716.6)	(11,613.5)			
Actual	9,772.3	410,435.0	1,305,390.4	16,751.2			
Consumed: Estimate	6,439.6	270,463.0	953,013.4	9,133.3			
Actual	(9,942.0)	(417,564.0)	(1,358,183.9)	(15,664.5)			
Balance Per G/L 01/31/2023	4,117.3	172,926	584,567.72	7,166.96			
Purchases		XXXXXXXXXXXXXXXXXX	XXXXXXXXXXXXXXXXXX	XXXXXXXXXXXXXXXXXX			
Transfer out		XXXXXXXXXXXXXXXXXX	XXXXXXXXXXXXXXXXXX	XXXXXXXXXXXXXXXXXX			
Transfer in	16,150.0	678,302.0	2,535,373.8	28,112.4	156.9886		
Consumed	(15,552.6)	(653,209)	(2,228,155.0)	(29,461.28)	143.2658	1.8943	145.1601
Balance @ 02/28/2023	4,714.7	198,019	#####	5,818.07	189.1487		
Inven From Offsite/Transfers	0.0	0	0.00	0.00			
Est'd Inventory Addition	0.0	0	0.00	0.00			
Fuel Balance @ 02/28/2023	4,714.7	198,019	891,786.49	5,818.07	189.1487		
Reverse Fuel Balance		XXXXXXXXXXXXXXXXXX	(891,786.49)	XXXXXXXXXXXXXXXXXX			
Fuel Balance @ Avg Price		XXXXXXXXXXXXXXXXXX	693,574.15	XXXXXXXXXXXXXXXXXX			
Total @ 03/01/2023 Avg Price	4,714.7	198,019	693,574.15	5,818.07	147.1077		

Weighted Avg Cost/BBL by Location 189.1487 1.2340

Weighted Avg Cost/BBL @ Avg Cost 147.1077 1.2340

HAWAII ELECTRIC LIGHT CO., INC.
Estimated Weighted Average
March 2023

TOTAL HILO HS-DIESEL

HS Diesel	BBL	GALLONS	COST EXCLUDE LT	LAND TRANSP	COST PER BARREL EXCL LT	LT	TOTAL
Balance at 01/31/2023	1423.3	59,778	206,818	2,125			
Less: Est'd Inven Addition	0.0	0	0	0			
Purchases: Estimate		XXXXXXXXXXXX	XXXXXXXXXXXX	XXXXXXXXXXXX			
Actual		XXXXXXXXXXXX	XXXXXXXXXXXX	XXXXXXXXXXXX			
Transfers out: Estimate		XXXXXXXXXXXX	XXXXXXXXXXXX	XXXXXXXXXXXX			
Actual		XXXXXXXXXXXX	XXXXXXXXXXXX	XXXXXXXXXXXX			
Transfers in: Estimate	-945.2	-39699.0	-135331.5	-1452.4			
Actual	567.1	23819.0	76823.0	870.2			
Consumed: Estimate	604.8	25400.0	89500.4	762.2			
Actual	-393.0	-16508.0	-59356.3	-415.3			
Balance Per G/L 01/31/2023	1256.9	52,790	178,453.96	1,889.42	141.9789		
Purchases		XXXXXXXXXXXX	XXXXXXXXXXXX	XXXXXXXXXXXX			
Transfer out		XXXXXXXXXXXX	XXXXXXXXXXXX	XXXXXXXXXXXX			
Transfer in	1318.7	55385.0	208262.2	2026.3	0.0000		
Consumed	-1429.5	-60040.0	-204801.9	-2134.0	143.2658	1.4928	144.7586
Balance @ 02/28/2023	1,146.1	48,135	181,914.30	1781.72664	158.7286		
Inven From Offsite/Transfers	0.0	0.0	0.0	0.0			
Est'd Inventory Addition	0.0	0.0	0.0	0.0			
Fuel Balance @ Avg Price	1,146.1	48,135	181,914.30	1,781.73	158.7286		
Reverse Fuel Balance		XXXXXXXXXXXX	XXXXXXXXXXXX	-181,914.30	XXXXXXXXXXXX		
Fuel Balance @ Avg Price		XXXXXXXXXXXX	XXXXXXXXXXXX	168,595.90	XXXXXXXXXXXX		
Total @ 03/01/2023 Avg Price	1,146.1	48,135	168,595.90	1,781.73	147.1077		

Weighted Avg Cost/BBL by Location

158.7286 1.5546

Weighted Avg Cost/BBL @ Avg Cost

147.1077 1.5546

HAWAII ELECTRIC LIGHT CO., INC.
Estimated Weighted Average
March 2023

KEAHOLE ULSD

ULSD	BBL	GALLONS	COST EXCLUDE LT	LAND TRANSP	COST PER BARREL EXCLUD LT	LT	TOTAL
Balance at 01/31/2023	2,252.1	94,589	343,798.68	9,106.15			
Less: Est'd Inventory Addition	0.0						
Purchases: Estimate	(378.6)	(15,902)	(53,117.90)	(1,693.79)			
Actual	377.4	15,850	52,944.20	0.00			
Transfers out: Estimate		xxxxxxxxxxxx	xxxxxxxxxxxxxxx	xxxxxxxxxxxxxxx			
Actual		xxxxxxxxxxxx	xxxxxxxxxxxxxxx	xxxxxxxxxxxxxxx			
Transfers in: Estimate		76	0.00	8.10			
Actual		(251)	0.00	1,688.25			
Consumed: Estimate	325.5	13,669	50,030.02	1,161.94			
Actual	(278.7)	(11,705)	(45,161.14)	170.09	162.0477		
Balance Per G/L 01/31/2023	2,293.5	96,326	348,493.86	10,440.74	151.9501		
Purchases	189.4	7,953	27,441.74	847.11	0.0000		
Estimated Purchases	0.0	0	0.00	0.00			
Transfer in	(3.6)	(153)	0.00	(16.30)	0.00		
Consumed	(258.9)	(10,874)	(39,307.10)	(1,046.86)	151.8207	4.0434	155.8641
Balance @ 02/28/2023	2,220.3	93,252	336,628.50	#####	151.6149		
Inventory From Offsite/Transfers	0.0	0	0.00	0.00			
Est'd Inventory Addition	0.0	0	0.00	0.00			
Fuel Balance @ Avg Price	2,220.3	93,252	336,628.50	10,224.70	151.6149		
Reverse Fuel Balance	xxxxxxxxxxxx	xxxxxxxxxxxx	(336,628.50)	xxxxxxxxxxxx			
Fuel Balance @ Avg Price	xxxxxxxxxxxx	xxxxxxxxxxxx	334,921.18	xxxxxxxxxxxx			
Total @ 03/01/2023 Avg Price	2,220.3	93,252	334,921.18	10,224.70	150.8460		

Weighted Avg Cost/BBL by Location

151.6149 4.6051

Weighted Avg Cost/BBL @ Avg Cost

150.8460 4.6051

HAWAII ELECTRIC LIGHT CO., INC.
Estimated Weighted Average
March 2023

WAIMEA DIESEL

ULSD	BBL	GALLONS	COST EXCLUDE LT	LAND TRANSP	COST PER BARREL	LT	TOTAL
Balance at 01/31/2023	746.3	31,344.0	109,797.6	2,721.10			
Less: Est'd Inven Addition	0.0	0.0	0.00	0.00			
Purchases: Estimate		(7,918)	(26,448.71)	(702.25)			
Actual		7,918.0	26,448.7	0.00			
Transfers out: Estimate		xxxxxxxxxxxx	xxxxxxxxxxxx	xxxxxxxxxxxx			
Actual		xxxxxxxxxxxx	xxxxxxxxxxxx	xxxxxxxxxxxx			
Transfers in: Estimate	(6.0)	(252)	0.00	0.00			
Actual	7.9	330	0.00	702.25			
Consumed: Estimate	218.3	9,170	33,563.19	657.89			
Actual	(179.6)	(7,544)	(23,797.82)	(527.93)			
Balance Per G/L 01/31/2023	786.9	33,048	119,563.00	2,851.06	151.9501		
ULSD Purchases	189.1	7,944	27,410.66	704.56	144.9204		
Estimated Purchases	190.0	7,980	27,534.88	707.75			
Transfer in	xxxxxxxxxxxx	4	0.00	0.00	#DIV/0!		
Consumed	(317.8)	(13,348)	(48,250.06)	(1,158.80)	151.8207	3.6462	155.4669
Balance @ 02/28/2023	848.3	35,628	126,258.47	3104.57006	148.8396		
Inven From Offsite/Transfers	0.0	0	0.00	0.00			
Est'd Inventory Addition	0.0	0	0.00	0.00			
Fuel Balance @ Avg Price	848.3	35,628	126,258.47	3,104.57	148.8396		
Reverse Fuel Balance	xxxxxxxxxxxx	xxxxxxxxxxxx	(126,258.47)	xxxxxxxxxxxx			
Fuel Balance @ Avg Price	xxxxxxxxxxxx	xxxxxxxxxxxx	127,960.49	xxxxxxxxxxxx			
Total @ 03/01/2023 Avg Price	848.3	35,628	127,960.49	3,104.57	150.8460		

Weighted Avg Cost/BBL by Location

148.8396 3.6598

Weighted Avg Cost/BBL @ Avg Cost

150.8460 3.6598

HAWAII ELECTRIC LIGHT CO., INC.
Estimated Weighted Average
March 2023

KANOELEHUA DIESEL

ULSD	BBL	GALLONS	COST EXCLUDE LT	LAND TRANSP
Balance at 01/31/2023	1,202.8	50,516.0	183,861.1	1856.0
Less: Est'd Inventory Addition	0.0	0	0.00	0.00
Purchases: Estimate	0.0	0	0.00	0.00
Actual	0.0	0	0.00	0.00
Transfers out: Estimate		x	x	x
Actual		x	x	x
Transfers in: Estimate		0	0.00	0.00
Actual		0	0.00	0.00
Consumed: Estimate	151.7	6,371	23,318.55	197.26
Actual	(126.9)	(5,328)	(20,646.46)	(174.66)
Balance Per G/L 01/31/2023	1,227.6	51,559	186,533.18	1,878.55
ULSD Purchases	189	7,950	27,431.39	290.86
Estimated Purchases	0	-	-	-
Transfer in	0	0	0.00	0.00
Consumed	(156.5)	(6,575)	(23,767.17)	(241.57)
Balance @ 02/28/2023	1,260.3	52,934	190,197.40	1,927.84
Inventory From Offsite/Transfers	0.0	0	0.00	0.00
Est'd Inventory Addition	0.0	0	0.00	0.00
Fuel Balance @ Avg Price	1,260.3	52,934	190,197.40	1,927.84
Reverse Fuel Balance	x	x	(190,197.40)	x
Fuel Balance @ Avg Price	x	x	190,116.22	x
Total @ 03/01/2023 Avg Price	1,260.3	52,934	190,116.22	1,927.84

Weighted Avg Cost/BBL by Location

150.9104 1.5296

Weighted Avg Cost/BBL @ Avg Cost

150.8460 1.5296

HAWAII ELECTRIC LIGHT CO., INC.
Estimated Weighted Average
March 2023

DISPERSED GENERATION

	BBL	GALLONS	COST	COST/BBL
Balance at 01/31/2023	117.3	4,925	18,169.27	
Less: Est'd Inven Addition	0.0	XXXXXXXXXX	XXXXXXXXXX	
Purchases: Estimate	0.0	0	0.00	
Actual	0.0	0	0.00	
Consumed: Estimate	2.3	98	358.69	
Actual	(3.6)	(151)	(901.75)	
	XXXXXXXXXX	XXXXXXXXXX	XXXXXXXXXX	
	XXXXXXXXXX	XXXXXXXXXX	XXXXXXXXXX	
	XXXXXXXXXX	XXXXXXXXXX	XXXXXXXXXX	
	XXXXXXXXXX	XXXXXXXXXX	XXXXXXXXXX	
Balance Per G/L 01/31/2023	116.00	4,872	17,626.21	151.9501
Purchases	0.0	0	0.00	0.0000
Transfer out	XXXXXXXXXX	XXXXXXXXXX	XXXXXXXXXX	
Transfer in	XXXXXXXXXX	XXXXXXXXXX	XXXXXXXXXX	
Consumed	(16.8)	(705)	(2,548.42)	151.8207
Balance @ 02/28/2023	132.5	5,567	19,907.79	150.1935
Est'd Inventory Addition	0.0	0	0.00	
Fuel Balance @ 02/28/2023	132.5	5,567	19,907.79	
Reverse Fuel Balance	XXXXXXXXXX	XXXXXXXXXX	(19,907.79)	xxxx
Fuel Balance @ Avg Price	XXXXXXXXXX	XXXXXXXXXX	19,994.28	xxxx
Total @ 03/01/2023 Avg Price	132.5	5,567	19,994.28	150.8460

Hawaii Electric Light Company, Inc.
PURCHASED POWER PRICES FOR March 1, 2023

		<u>March 1, 2023</u> <u>(¢/kWh)</u>	<u>Floor Rates</u> <u>(¢/kWh)</u>
PGV (25 MW)	- on peak	20.577	6.560
PGV (22 MW)	- off peak	20.909	5.430
WAILUKU HYDRO	- on peak	20.577	7.240
	off peak	20.909	5.970
Other: (<100 KW)	Sch Q Rate	20.290	

		<u>March 1, 2023</u> <u>(¢/kWh)</u>	<u>Floor Rates</u> <u>(¢/kWh)</u>
HEP		21.733	
PGV Addtl 5 MW	- on peak	13.850	0.0000
	- off peak	13.850	0.0000
PGV Addtl 8 MW	- on peak	7.040	0.0000
	- off peak	7.040	0.0000

Hawaii Electric Light Company, Inc.
Energy Cost Reconciliation Adjustment
March 1, 2023

<u>Line No.</u>	<u>Description</u>	<u>Amount</u>
1	Amount to be (returned) or collected	(\$219,500)
2	Monthly Amount ($\frac{1}{3}$ x Line 1)	(\$73,167)
3	Revenue Tax Divisor	0.91115
	Total (Line 2 / Line 3)	(\$80,301)
5	Estimated MWh Sales (March 1, 2023)	87,917 mwh
6	Adjustment (Line 4 / Line 5)	(0.091) ¢/kwh

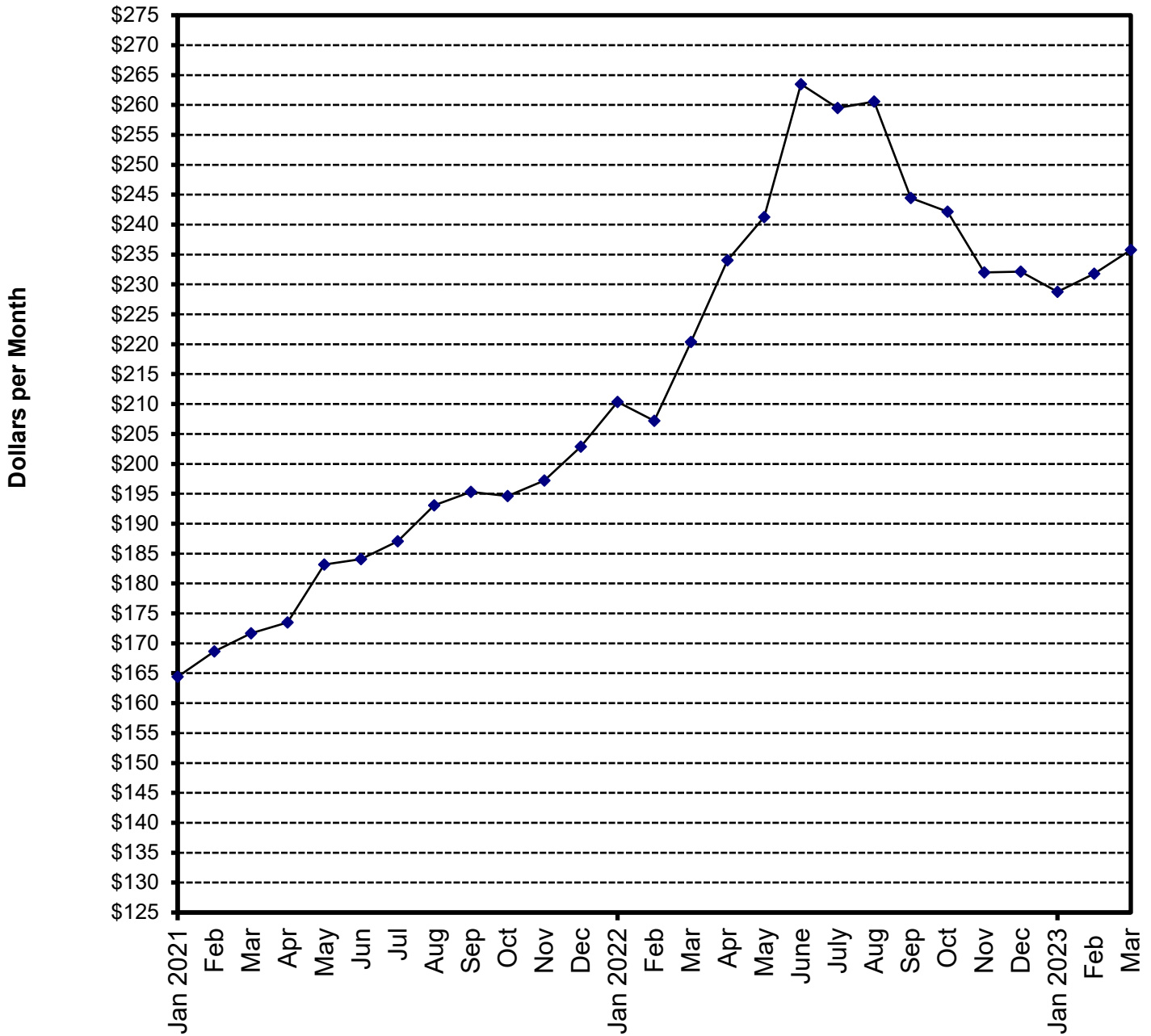
HAWAII ELECTRIC LIGHT COMPANY, INC.
2023 Cumulative Reconciliation Balance

Month	(1) YTD FOA Reconciliation	Qtr	(2) FOA Rec Adjust Variance	(3) FOA Rec Less Variance	(4) Try to Collect	(5) Actual Collect	(6) Month-end Cumulative Balance
January 21					(261,333)	(275,071)	12,258
February 21	374,300	[4]	(9,409)	383,709	(124,767)	(125,584)	270,383
March					(124,767)	(134,386)	135,997
April					(124,767)	(131,121)	4,876
May	(707,400)	(1)	(24,174)	(683,226)	235,800	261,182	(417,168)
June					235,800	262,654	(154,514)
July					235,800	253,310	98,796
August	(80,900)	[2]	45,882	(126,782)	26,967	29,218	1,232
September					26,967	28,336	29,568
October					26,967	27,747	57,315
November	(794,600)	[3]	21,130	(815,730)	264,867	280,992	(477,423)
December					264,867	292,531	(184,892)
January 22					264,867	270,827	85,935
February 22	(849,900)	[4]	44,569	(894,469)	283,300	291,654	(516,880)
March					283,300	304,924	(211,956)
April					283,300	310,129	98,173
May	(2,364,200)	[1]	35,938	(2,400,138)	788,067	865,010	(1,436,955)
June					788,067	818,932	(618,023)
July					788,067	790,896	172,873
August	(1,068,900)	[2]	134,637	(1,203,537)	356,300	361,221	(669,443)
September					356,300	365,659	(303,784)
October					356,300	370,642	66,858
November	492,400	[3]	17,109	475,291	(164,133)	(159,923)	382,226
December					(164,133)	(166,766)	215,460
January 23					(164,133)	(156,998)	58,462
February	219,500	[4]	15,919	203,581	(73,167)		
March					(73,167)		

NOTES:

- Col(1): Quarterly FOA reconciliation amounts. (Refer to Attachment 6)
A positive number is an over-collection. A negative number is an under-collection.
- Col(2): FOA reconciliation adjustment variance accumulated during the last three months, starting with the fourth prior month; the difference between the estimated recorded sales used to derive the \$/kwh adjustment and the actual recorded sales.
(Col(5)-Col(4))
- Col(3): FOA reconciliation generated in the current quarter. The YTD FOA reconciliation difference minus the adjustment variance. Col(1)-Col(2)
- Col(4): Amount that the FOA reconciliation adjustment is trying to collect. (Col(1) * 1/3)
- Col(5): Actual collected amount. (recorded sales * \$/kwh adjustment/1.09751)
- Col(6): Cumulative balance of the FOA reconciliation (Previous balance + Col(3) + Col(5))

Hawaii Electric Light Company, Inc. Residential Bill at 500 KWH/Month Consumption



**HAWAII ELECTRIC LIGHT COMPANY, INC.
FUEL OIL ADJUSTMENT FACTOR DATA**

<u>EFFECTIVE DATE</u>	<u>FUEL FACTOR</u>		
	<u>CENTS / KWH</u>	<u>RESIDENTIAL BILL (\$)</u>	
	<u>RESIDENTIAL & COMMERCIAL</u>	<u>@ 500 KWH</u>	<u>@ 600 KWH</u>
January 1, 2019	6.867	187.86	224.86
February 1, 2019	14.631	174.25	208.53
March 1, 2019	14.976	176.1	210.75
April 1, 2019	16.469	183.12	219.17
May 1, 2019	17.396	188.74	225.93
June 1, 2019	17.318	187.89	224.90
July 1, 2019	16.450	183.46	219.63
August 1, 2019	15.331	178.14	213.25
September 1, 2019	14.845	175.70	210.32
October 1, 2019	14.692	174.93	209.40
November 1, 2019	16.302	181.76	217.59
December 1, 2019	16.288	181.82	217.67
January 1, 2020	16.768	185.37	221.88
February 1, 2020	17.547	189.22	226.49
March 1, 2020	17.424	188.72	225.90
April 1, 2020	15.644	179.61	214.96
May 1, 2020	11.215	157.94	188.96
June 1, 2020	10.575	151.51	181.25
July 1, 2020	11.359	154.68	185.07
August 1, 2020	14.389	170.16	203.65
September 1, 2020	14.569	171.01	204.67
October 1, 2020	14.274	169.56	202.93
November 1, 2020	13.426	163.74	195.96
December 1, 2020	13.032	161.87	193.70
January 1, 2021	13.543	164.41	196.74
February 1, 2021	14.523	168.63	201.81
March 1, 2021	15.091	171.67	205.45
April 1, 2021	15.486	173.51	207.68
May 1, 2021	16.982	183.19	219.28
June 1, 2021	16.726	184.08	220.35
July 1, 2021	17.040	187.04	223.92
August 1, 2021	18.134	193.08	231.16
September 1, 2021	18.588	195.30	233.83
October 1, 2021	18.447	194.63	233.01
November 1, 2021	19.470	197.22	236.14
December 1, 2021	20.549	202.87	242.91
January 1, 2022	20.942	210.36	251.90
February 1, 2022	20.361	207.20	248.09
March 1, 2022	22.943	220.40	263.93
April 1, 2022	25.717	234.05	280.30
May 1, 2022	27.068	241.26	288.97
June 1, 2022	31.165	263.48	315.62
July 1, 2022	30.355	259.50	310.86
August 1, 2022	30.507	260.56	312.13
September 1, 2022	27.322	244.46	292.81
October 1, 2022	26.850	242.17	290.06
November 1, 2022	24.879	231.99	277.85
December 1, 2022	24.880	232.14	278.03
January 1, 2023	24.245	228.78	273.99
February 1, 2023	24.918	231.81	277.63
March 1, 2023	25.651	235.76	282.37

**HAWAII ELECTRIC LIGHT COMPANY, INC.
RESIDENTIAL SURCHARGE DATA**

EFFECTIVE DATE	DESCRIPTION OF SURCHARGE	RATE
1/1/2020-10/31/2020	INTERIM RATE ADJUSTMENT 2019	4.0900 PERCENT ON BASE
1/1/2020-6/30/2020	RESIDENTIAL PBF SURCHARGE ADJUSTMENT	0.7437 CENTS/KWH
2/1/2020- 2/29/2020	PURCHASED POWER ADJUSTMENT CLAUSE	1.7631 CENTS/KWH
3/1/2020- 3/31/2020	PURCHASED POWER ADJUSTMENT CLAUSE	1.7883 CENTS/KWH
4/1/2020- 4/30/2020	PURCHASED POWER ADJUSTMENT CLAUSE	1.7717 CENTS/KWH
4/1/2020- 4/30/2020	SOLARSAVER ADJUSTMENT	-0.0267 CENTS/KWH
05/01/2020-5/31/2020	PURCHASED POWER ADJUSTMENT CLAUSE	1.8396 CENTS/KWH
5/1/2020 -3/31/2021	SOLARSAVER ADJUSTMENT	0.0000 CENTS/KWH
06/01/2020-6/30/2020	PURCHASED POWER ADJUSTMENT CLAUSE	1.8413 CENTS/KWH
6/1/2020-5/31/2021	RBA RATE ADJUSTMENT	-0.4623 CENTS/KWH
07/01/2020-7/31/2020	PURCHASED POWER ADJUSTMENT CLAUSE	1.8592 CENTS/KWH
7/1/2020- 6/30/2021	RESIDENTIAL PBF SURCHARGE ADJUSTMENT	0.5882 CENTS/KWH
7/1/2020	GREEN INFRASTRUCTURE FEE	1.19 DOLLARS/MONTH
8/1/2020-8/31/2020	PURCHASED POWER ADJUSTMENT CLAUSE	1.9261 CENTS/KWH
9/1/2020-9/30/2020	PURCHASED POWER ADJUSTMENT CLAUSE	1.9161 CENTS/KWH
10/1/2020-10/31/2020	PURCHASED POWER ADJUSTMENT CLAUSE	1.9222 CENTS/KWH
11/1/2020-11/30/2020	PURCHASED POWER ADJUSTMENT CLAUSE	1.9106 CENTS/KWH
11/1/2020	Final Rates (TY2019), Docket No. 2018-0368, Order No. 37395	
12/1/2020-12/31/2020	PURCHASED POWER ADJUSTMENT CLAUSE	1.9291 CENTS/KWH
1/1/2021-1/31/2021	PURCHASED POWER ADJUSTMENT CLAUSE	1.9133 CENTS/KWH
1/1/2021-6/30/2021	GREEN INFRASTRUCTURE FEE	1.25 DOLLARS/MONTH
2/1/2021-2/28/2021	PURCHASED POWER ADJUSTMENT CLAUSE	1.7782 CENTS/KWH
3/1/2021-3/31/2021	PURCHASED POWER ADJUSTMENT CLAUSE	1.8172 CENTS/KWH
4/1/2021-4/30/2021	PURCHASED POWER ADJUSTMENT CLAUSE	1.7966 CENTS/KWH
4/1/2021-4/30/2021	SOLARSAVER ADJUSTMENT	-0.0033 CENTS/KWH
5/1/2021-5/31/2021	PURCHASED POWER ADJUSTMENT CLAUSE	2.2319 CENTS/KWH
5/1/2021-3/31/2022	SOLARSAVER ADJUSTMENT	0.0000 CENTS/KWH
6/1/2021-6/30/2021	PURCHASED POWER ADJUSTMENT CLAUSE	2.2333 CENTS/KWH
6/1/2021-12/31/2021	RBA RATE ADJUSTMENT	-0.0299 CENTS/KWH
7/1/2021-12/31/2021	GREEN INFRASTRUCTURE FEE	1.19 DOLLARS/MONTH
7/1/2021-7/31/2021	PURCHASED POWER ADJUSTMENT CLAUSE	2.4649 CENTS/KWH
7/1/2021-06/30/2022	RESIDENTIAL PBF SURCHARGE ADJUSTMENT	0.6478 CENTS/KWH
8/1/2021-8/31/2021	PURCHASED POWER ADJUSTMENT CLAUSE	2.4876 CENTS/KWH
8/1/2021-10/31/2021	RESIDENTIAL DSM ADJUSTMENT	0.0893 CENTS/KWH
9/1/2021-9/30/2021	PURCHASED POWER ADJUSTMENT CLAUSE	2.4776 CENTS/KWH
10/1/2021-10/31/2021	PURCHASED POWER ADJUSTMENT CLAUSE	2.4838 CENTS/KWH
11/1/2021-11/30/2021	PURCHASED POWER ADJUSTMENT CLAUSE	2.0761 CENTS/KWH
11/1/2021	RESIDENTIAL DSM ADJUSTMENT	-0.0051 CENTS/KWH
12/1/2021-12/31/2021	PURCHASED POWER ADJUSTMENT CLAUSE	2.1263 CENTS/KWH
1/1/2022-06/30/2022	GREEN INFRASTRUCTURE FEE	1.25 DOLLARS/MONTH
1/1/2022-5/31/2022	RBA RATE ADJUSTMENT	1.0380 CENTS/KWH
1/1/2022-1/31/2022	PURCHASED POWER ADJUSTMENT CLAUSE	2.1529 CENTS/KWH
2/1/2022-2/28/2022	PURCHASED POWER ADJUSTMENT CLAUSE	2.0987 CENTS/KWH
2/1/2022- 4/30/2022	RESIDENTIAL DSM ADJUSTMENT	-0.0043 CENTS/KWH
3/1/2022-3/31/2022	PURCHASED POWER ADJUSTMENT CLAUSE	2.1564 CENTS/KWH
4/1/2022-4/30/2022	PURCHASED POWER ADJUSTMENT CLAUSE	2.1141 CENTS/KWH
4/1/2022-4/30/2022	SOLARSAVER ADJUSTMENT	-0.0011 CENTS/KWH
5/1/2022-5/31/2022	PURCHASED POWER ADJUSTMENT CLAUSE	2.2917 CENTS/KWH
5/1/2022	SOLARSAVER ADJUSTMENT	0.0000 CENTS/KWH
5/1/2022-7/31/2022	RESIDENTIAL DSM ADJUSTMENT	-0.0912 CENTS/KWH
6/1/2022-6/30/2022	PURCHASED POWER ADJUSTMENT CLAUSE	2.3052 CENTS/KWH
6/1/2022-12/31/2022	RBA RATE ADJUSTMENT	1.3708 CENTS/KWH
7/1/2022-7/31/2022	PURCHASED POWER ADJUSTMENT CLAUSE	2.3333 CENTS/KWH
7/1/2022-12/31/2022	GREEN INFRASTRUCTURE FEE	1.18 DOLLARS/MONTH
7/1/2022	RESIDENTIAL PBF SURCHARGE ADJUSTMENT	0.6488 CENTS/KWH
8/1/2022-8/31/2022	PURCHASED POWER ADJUSTMENT CLAUSE	2.2981 CENTS/KWH
8/1/2022-10/31/2022	RESIDENTIAL DSM ADJUSTMENT	0.0035 CENTS/KWH
9/1/2022-9/30/2022	PURCHASED POWER ADJUSTMENT CLAUSE	2.2638 CENTS/KWH
10/1/2022-10/31/2022	PURCHASED POWER ADJUSTMENT CLAUSE	2.2771 CENTS/KWH
11/1/2022-11/30/2022	PURCHASED POWER ADJUSTMENT CLAUSE	2.2180 CENTS/KWH
11/1/2022	RESIDENTIAL DSM ADJUSTMENT	-0.0017 CENTS/KWH
12/1/2022-12/31/2022	PURCHASED POWER ADJUSTMENT CLAUSE	2.2472 CENTS/KWH
1/1/2023-1/31/2023	PURCHASED POWER ADJUSTMENT CLAUSE	2.2701 CENTS/KWH
1/1/2023-06/30/2023	GREEN INFRASTRUCTURE FEE	1.23 DOLLARS/MONTH
1/1/2023	RBA RATE ADJUSTMENT	1.3006 CENTS/KWH
2/1/2023-2/28/2023	PURCHASED POWER ADJUSTMENT CLAUSE	2.2018 CENTS/KWH
2/1/2023	RESIDENTIAL DSM ADJUSTMENT	0.0008 CENTS/KWH
3/1/2023-3/31/2023	PURCHASED POWER ADJUSTMENT CLAUSE	2.2576 CENTS/KWH

**Base charges include customer charge, demand charge, energy charge, power factor adjustment, voltage discount, and minimum charge.

Calculations of the Average Residential Customer Bill

	Rate		Charge (\$) at 500 Kwh			
	2/01/23	3/01/23	2/01/23	3/01/23	Difference	
Base Rates	effective date:	11/01/2020	11/01/2020			
Base Fuel Energy Charge	¢/kwh	-	-	\$0.00	\$0.00	\$0.00
Non-Fuel Energy Charge	¢/kwh			\$73.74	\$73.74	\$0.00
First 300 kWh per month	¢/kwh	13.4059	13.4059	\$40.22	\$40.22	\$0.00
Next 700 kWh per month	¢/kwh	16.7577	16.7577	\$33.52	\$33.52	\$0.00
Customer Charge	\$	11.50	11.50	\$11.50	\$11.50	\$0.00
Total Base Charges				\$85.24	\$85.24	\$0.00
Interim Rate Adjustment 2019 TY	% on base	0.0000%	0.0000%	\$0.00	\$0.00	\$0.00
RBA Rate Adjustment	¢/kwh	1.3006	1.3006	\$6.50	\$6.50	\$0.00
Purchased Power Adj. Clause	¢/kwh	2.2018	2.2576	\$11.01	\$11.29	\$0.28
PBF Surcharge	¢/kwh	0.6488	0.6488	\$3.24	\$3.24	\$0.00
DSM Adjustment	¢/kwh	0.0008	0.0008	\$0.00	\$0.00	\$0.00
SolarSaver Adjustment	¢/kwh	0.0000	0.0000	\$0.00	\$0.00	\$0.00
Energy Cost Recovery	¢/kwh	24.9180	25.6510	\$124.59	\$128.26	\$3.67
Green Infrastructure Fee	\$	1.23	1.23	\$1.23	\$1.23	\$0.00
Avg Residential Bill at 500 kwh				\$231.81	\$235.76	

Increase (Decrease -)	\$3.95
% Change	1.70%

	Rate		Charge (\$) at 600 Kwh			
	2/01/23	3/01/23	2/01/23	3/01/23	Difference	
Base Rates	effective date:	11/01/2020	11/01/2020			
Base Fuel/Energy Charge	¢/kwh	-	-	\$0.00	\$0.00	\$0.00
Non-Fuel Energy Charge	¢/kwh			\$90.49	\$90.49	\$0.00
First 300 kWh per month	¢/kwh	13.4059	13.4059	\$40.22	\$40.22	\$0.00
Next 700 kWh per month	¢/kwh	16.7577	16.7577	\$50.27	\$50.27	\$0.00
Customer Charge	\$	11.50	11.50	\$11.50	\$11.50	\$0.00
Total Base Charges				\$101.99	\$101.99	\$0.00
Interim Rate Adjustment 2019 TY	% on base	0.0000%	0.0000%	\$0.00	\$0.00	\$0.00
RBA Rate Adjustment	¢/kwh	1.3006	1.3006	\$7.80	\$7.80	\$0.00
Purchased Power Adj. Clause	¢/kwh	2.2018	2.2576	\$13.21	\$13.55	\$0.34
PBF Surcharge	¢/kwh	0.6488	0.6488	\$3.89	\$3.89	\$0.00
DSM Adjustment	¢/kwh	0.0008	0.0008	\$0.00	\$0.00	\$0.00
SolarSaver Adjustment	¢/kwh	0.0000	0.0000	\$0.00	\$0.00	\$0.00
Energy Cost Recovery	¢/kwh	24.9180	25.6510	\$149.51	\$153.91	\$4.40
Green Infrastructure Fee	\$	1.23	1.23	\$1.23	\$1.23	\$0.00
Avg Residential Bill at 600 kwh				\$277.63	\$282.37	

Increase (Decrease -)	\$4.74
% Change	1.71%

From: puc@hawaii.gov
To: [Mounthongdy, Christine](#)
Subject: Hawaii PUC eFiling Confirmation of Filing
Date: Friday, February 24, 2023 9:30:17 AM

[This email is coming from an EXTERNAL source. Please use caution when opening attachments or links in suspicious email.]

Your eFile document has been filed with the Hawaii Public Utilities commission on 2023 Feb 24 AM 09:28. The mere fact of filing shall not waive any failure to comply with Hawaii Administrative Rules Chapter 6-61, Rules of Practice and Procedure Before the Public Utilities Commission, or any other application requirements. Your confirmation number is CHRI23092815799. If you have received this email in error please notify the Hawaii Public Utilities Commission by phone at 808 586-2020 or email at hawaii.puc@hawaii.gov.