



**Hawaiian
Electric**

CBRE Order 37592 Stakeholder Working Group

Docket No. 2015-0389

February 11, 2021



Agenda

- ◆ Welcome & Introductions
 - CBRE Order 37592 Overview
 - Ground Rules
- ◆ Overview of Interconnection Topics
 - Scope and Schedule
 - Proposed Topics for Filing Recommendations
 - Feedback from Parties
- ◆ Next Steps



Ground Rules

- ◆ Chatham House Rule will apply – no personal or organizational attribution will be made to any comments/feedback provided during the meeting by any participant nor in written documentation.
- ◆ Working group meetings, and other information exchanges are intended solely to provide an open forum or means for the expression of various points of view in compliance with antitrust laws.
- ◆ Under no circumstances shall engagement activities be used as a means for competing companies to reach any understanding, expressed or implied, which tends to restrict competition, or in any way, to impair the ability of participating organizations to exercise independent business judgment regarding matters affecting competition or regulatory positions.
- ◆ Proprietary information shall not be disclosed by any participant during any industry engagement meeting or information exchange. In addition, no information of a secret or proprietary nature shall be made available to industry engagement participants.
- ◆ All proprietary information which may nonetheless be publicly disclosed by any participant during any industry engagement meeting or information exchange shall be deemed to have been disclosed on a non-confidential basis, without any restrictions on use by anyone, except that no valid copyright or patent right shall be deemed to have been waived by such disclosure.



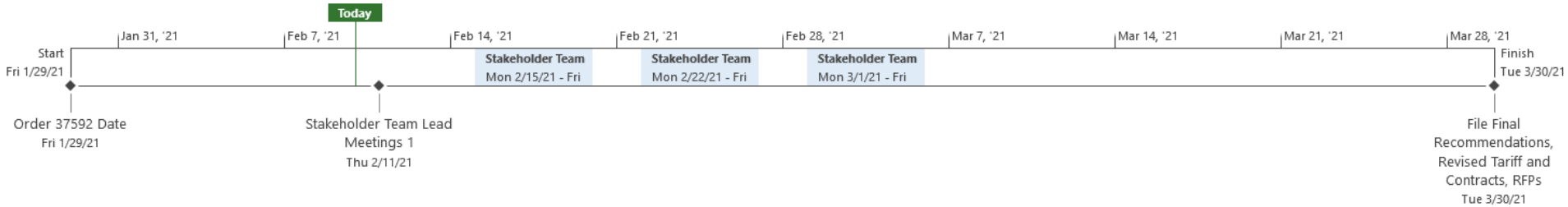
Order 37592

◆ PUC

- Parties, Participants and Independent Observer
 - How to make Hawaiian Electric's CBRE interconnection process more
 - Transparent
 - Predictable
 - Including costs, timelines and engineering decisions
 - Best practices used in other jurisdictions



60-day Filing Schedule





**Hawaiian
Electric**

Overview of Interconnection Topics



Problem Statement

- ◆ “...Hawaiian Electric’s interconnection processes and policies are increasing development costs and extending project timelines.”
- ◆ Developers do not have certainty in the interconnection process to make informed decisions on their bid pricing.



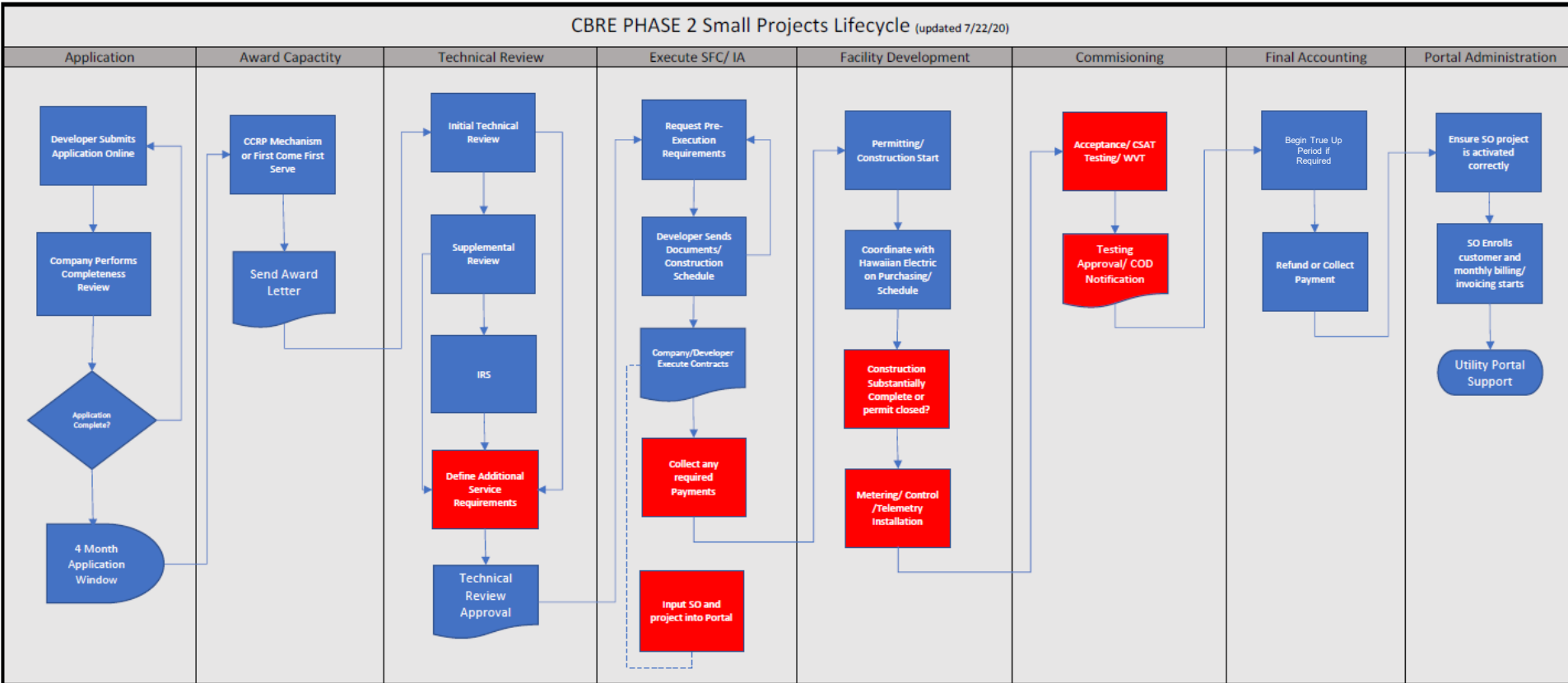
Solution

- ◆ “The Commission believes that the most prudent way to address this pressing issue is for Hawaiian Electric to work with Parties and Participants in this docket to develop recommendations for how to improve current interconnection processes for CBRE projects.”

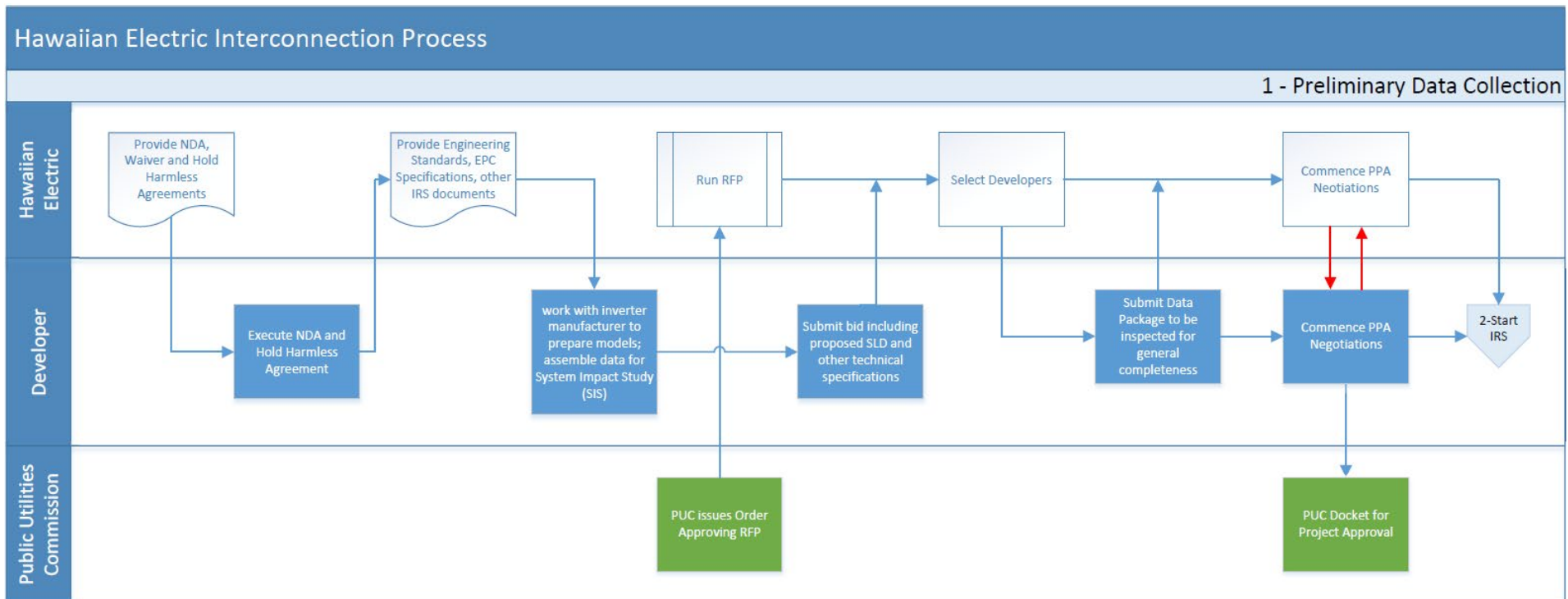


Interconnection Process for Small Projects

CBRE PHASE 2 Small Projects Lifecycle (updated 7/22/20)



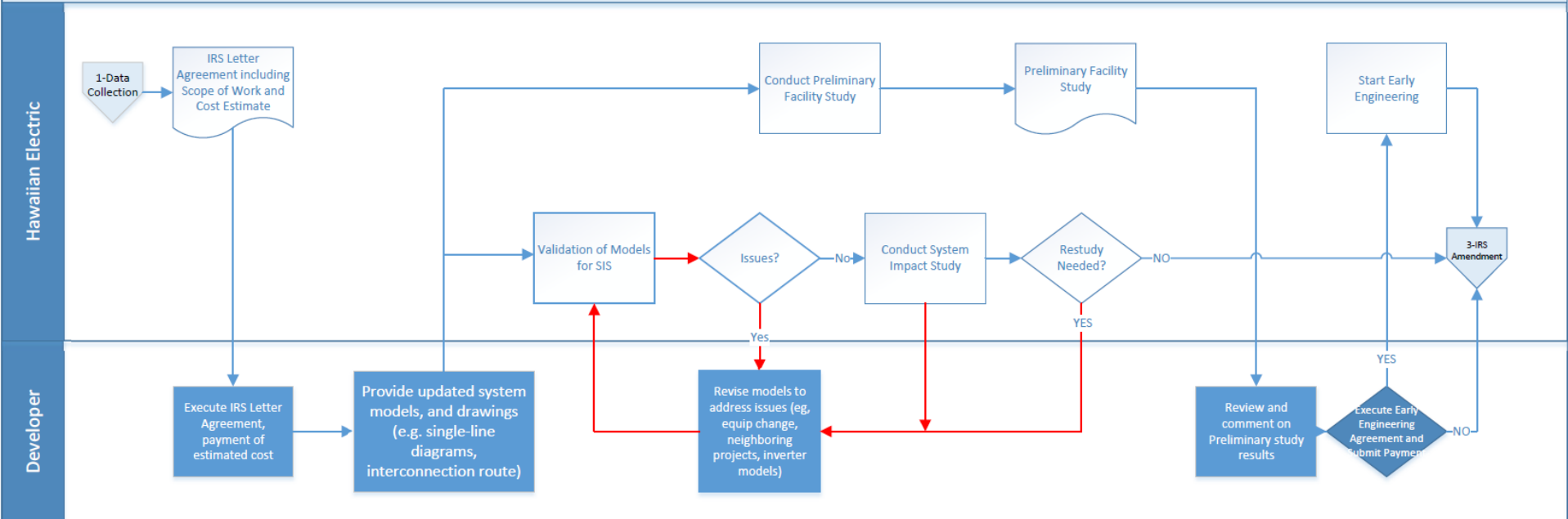
Interconnection Process for RFPs



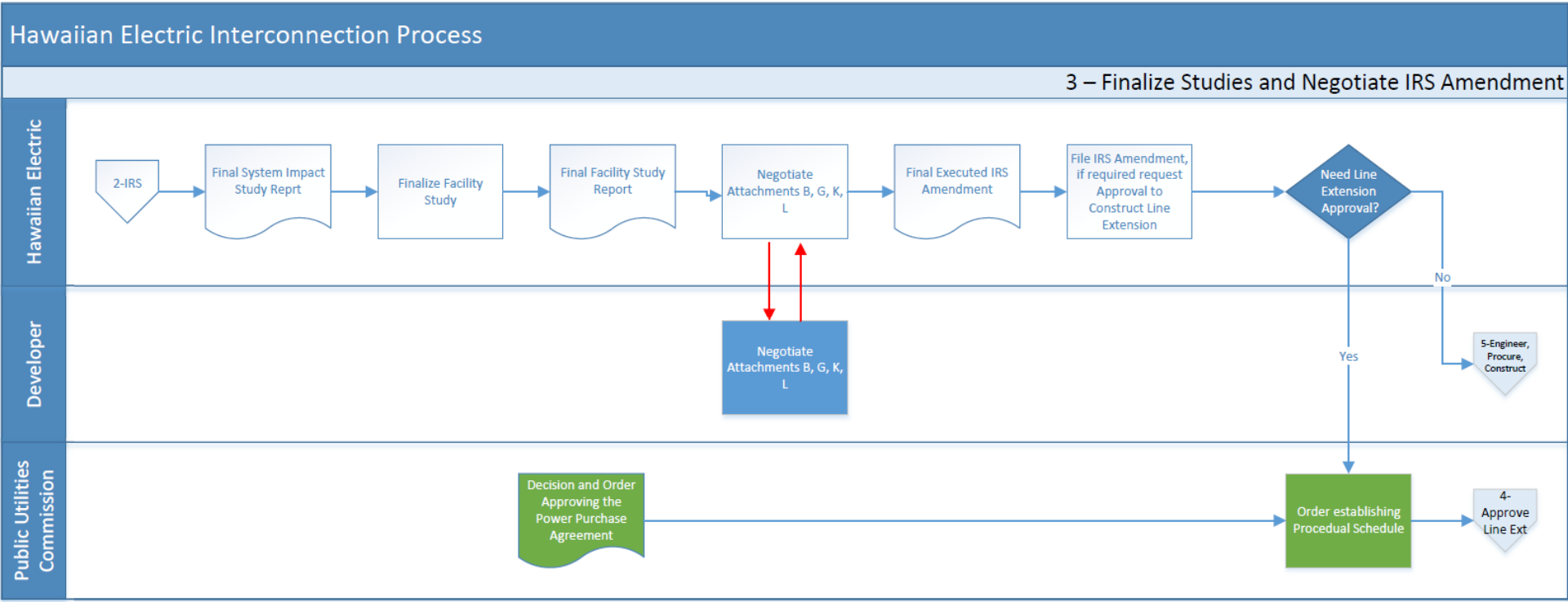
Interconnection Process for RFPs

Hawaiian Electric Interconnection Process

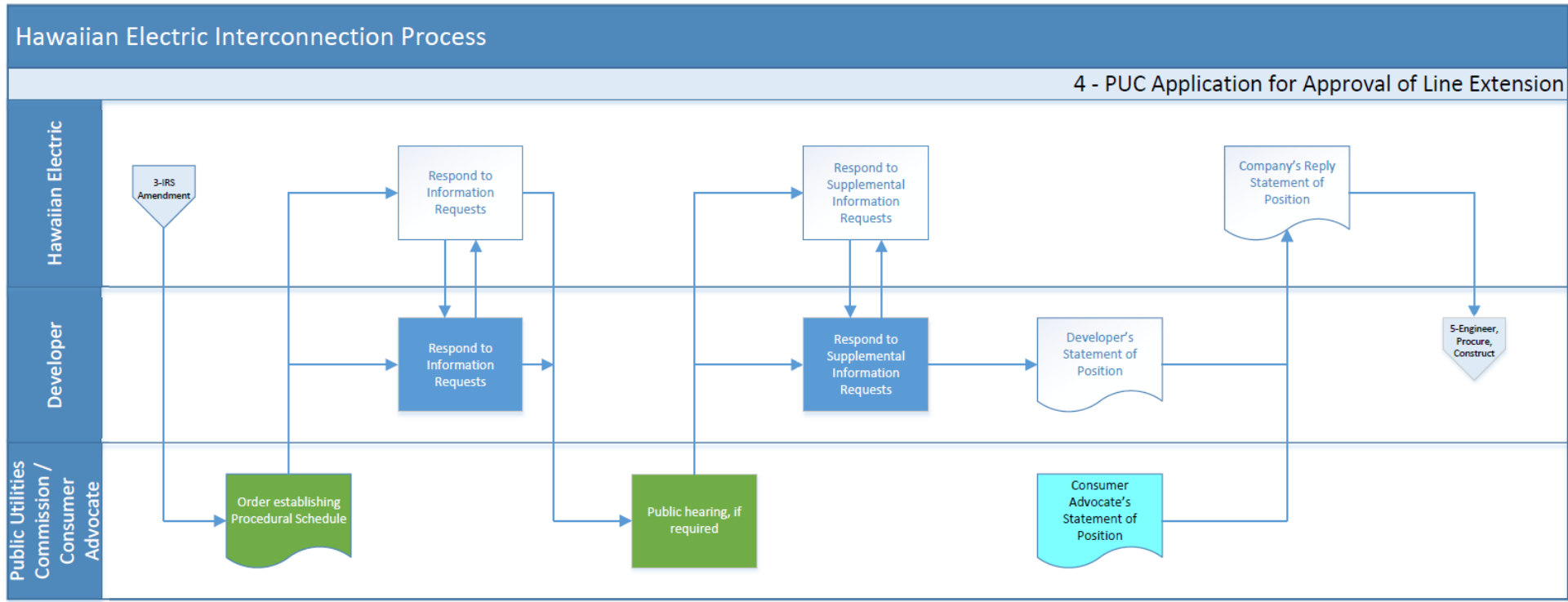
2 – Commence Interconnection Requirements Studies (System Impact Study & Facility Study)



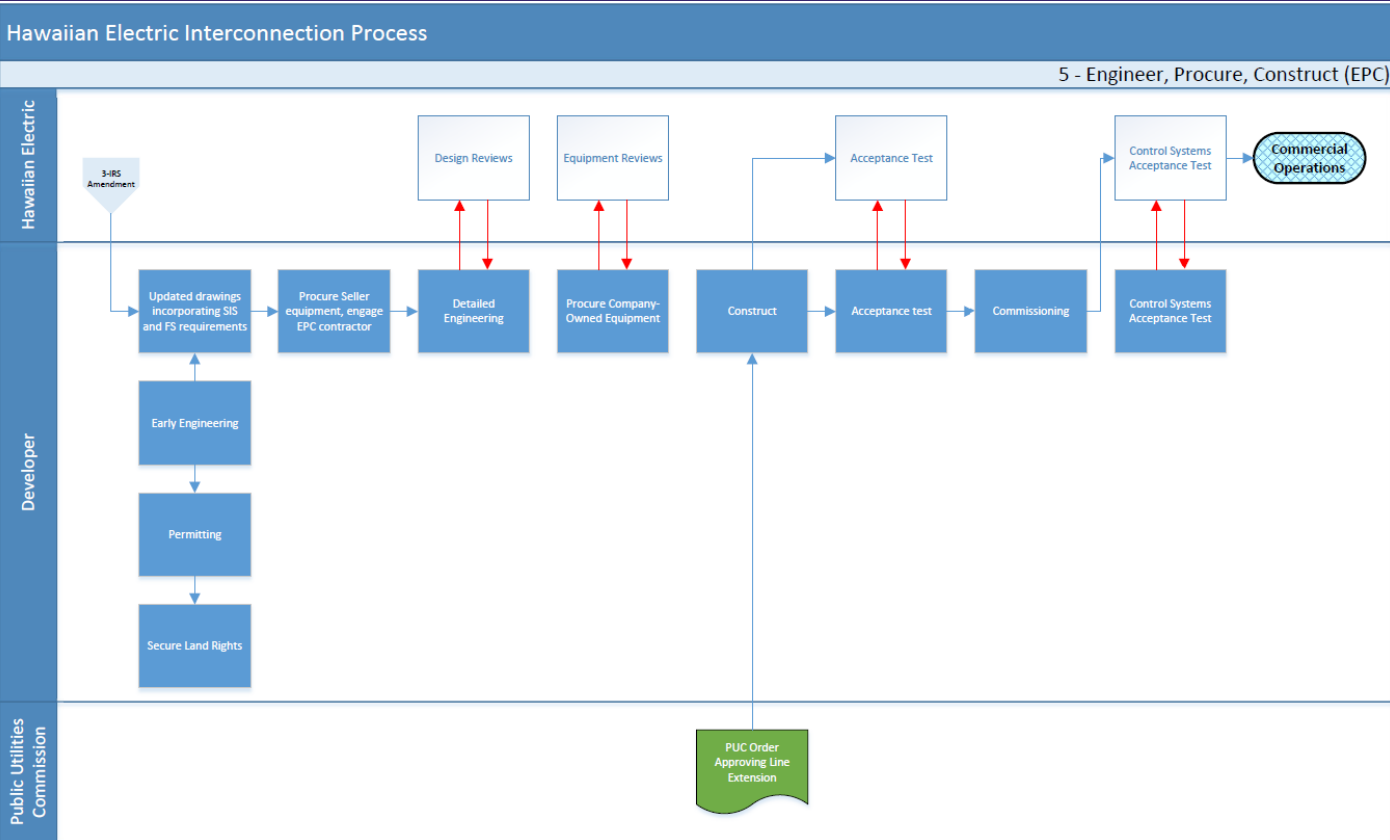
Interconnection Process for RFPs



Interconnection Process for RFPs



Interconnection Process for RFPs



Interconnection Deliverables

- ◆ The Commission expects that any changes to the Tariff and the RFPs will be submitted to the Commission for review with the final RFP filings in this docket
 - Develop and propose innovative solutions and draw on best practices employed in other jurisdictions
 - Hawaiian Electric commitment to implement these improvements
- ◆ Transparent methods for stakeholders and the Commission to hold Hawaiian Electric accountable for the resulting outcomes
 - Parking lot for interconnection issues that need more time to resolve.
- ◆ Near term changes to the Tariff
- ◆ RFPs already filed in this docket



Hawaiian Electric Proposed Interconnection Improvements (already filed)

- ◆ LMI Interconnection Cost Pilot Proposal
- ◆ Unit Cost Pricing / Appendix H in RFPs
- ◆ Tariff
 - Small Project IRS 150 days to 90 days
 - Waive IRS for small CBRE projects served by a dedicated service transformer on a circuit with hosting capacity
- ◆ Improved Single-Line Diagrams





Backup Slides

Supporting Information

Suggestions from other Filings

- ◆ Joint Parties – RFP Projects
 - 2015-0389 August 12, 2020 Letter, page 6
 - Supports LMI interconnection cost recovery, expand for all CBRE projects
 - Molokai and Lanai projects would serve many LMI
 - Disclose up-to-date and accurate information on grid needs early in RFP process
 - Commission should require HE to run Hosting Capacity analysis information to Land RFI sites
 - PV+storage
 - Little assurance that capacity on a PV+storage project won't be double-counted, causing inaccurate estimates



Suggestions from other Filings

- ◆ Joint Parties – RFP Projects
 - 2015-0389 October 26, 2020 Letter, page 6
 - Interconnection cost recovery for all CBRE projects (also mentioned in Aug 12 letter)
 - More accurate and up-to-date information regarding primary and secondary hosting capacity
 - Capping interconnection costs at least for small projects
 - Ensuring CBRE PV+ Storage projects are not double counted for purposed of determining hosting capacity (also mentioned in Aug 12 letter)
 - Further shortening and standardizing the interconnection process



Suggestions from other Filings

- ◆ Joint Parties – Small Projects
 - 2015-0389 August 12, 2020 Letter, page 4
 - Support HE proposal to waive IRS for small CBRE projects on secondary distribution systems with available capacity
 - Oppose facilities “served by a dedicated service transformer”, one that serves only one customer
 - Unclear if it applies to Molokai and Lanai
 - LVM
 - inadequate because it is not ‘timely updated’
 - only a rough guide
 - does not address secondary circuits
 - Developers cannot accurately estimate and plan for costs of developing small CBRE projects
 - Could have wasted effort pursuing a site, only to discover no hosting capacity
 - Site control adds to developer risk
 - Developers won’t know if an IRS is required
 - Commission should order HE to disclosed up-to-date secondary circuit information and hosting capacity including line capacity
 - Or waive IRS where LVM shows circuit capacity is available
 - Commission should limit what HE can charge for interconnection on small projects
 - Like protections to NEM customers
 - Supports IRS review from 150 days to 90 days
 - Supports small projects awarded capacity to move directly to ITR, but that only removed 15 business days



Suggestions from other Filings

- ◆ Consumer Advocate

- 2015-0389 August 12, 2020 Letter, page 17
 - Conduct site control and IRS and development for developers to use
 - Consider community opposition
 - Supports LMI interconnection proposal



Comparative Interconnection Improvements

- ◆ Pre-Application Report, Capacity Screen
- ◆ Dispute Resolution Process
- ◆ Queue Management
- ◆ Automating Technical Review and Screening
- ◆ Tracking overall process flow
- ◆ Publicly Available Queue
- ◆ Formed small DER integration team to streamline procedures, tools and guidance documents across all areas
- ◆ Centralized Reporting
- ◆ Expecting number and complexity of applications to rise



Comparative Interconnection Improvements

- ◆ Establishing a Main Contact
- ◆ Solar Energy Analysis Pilot, explore suitability of installing solar energy systems
- ◆ Lean Six Sigma method to interconnection, improve practices, shorten time, reduce unnecessary steps
- ◆ Creating tools and resources to help customers better understand the interconnection process.
“Consumer Solar Guide”

