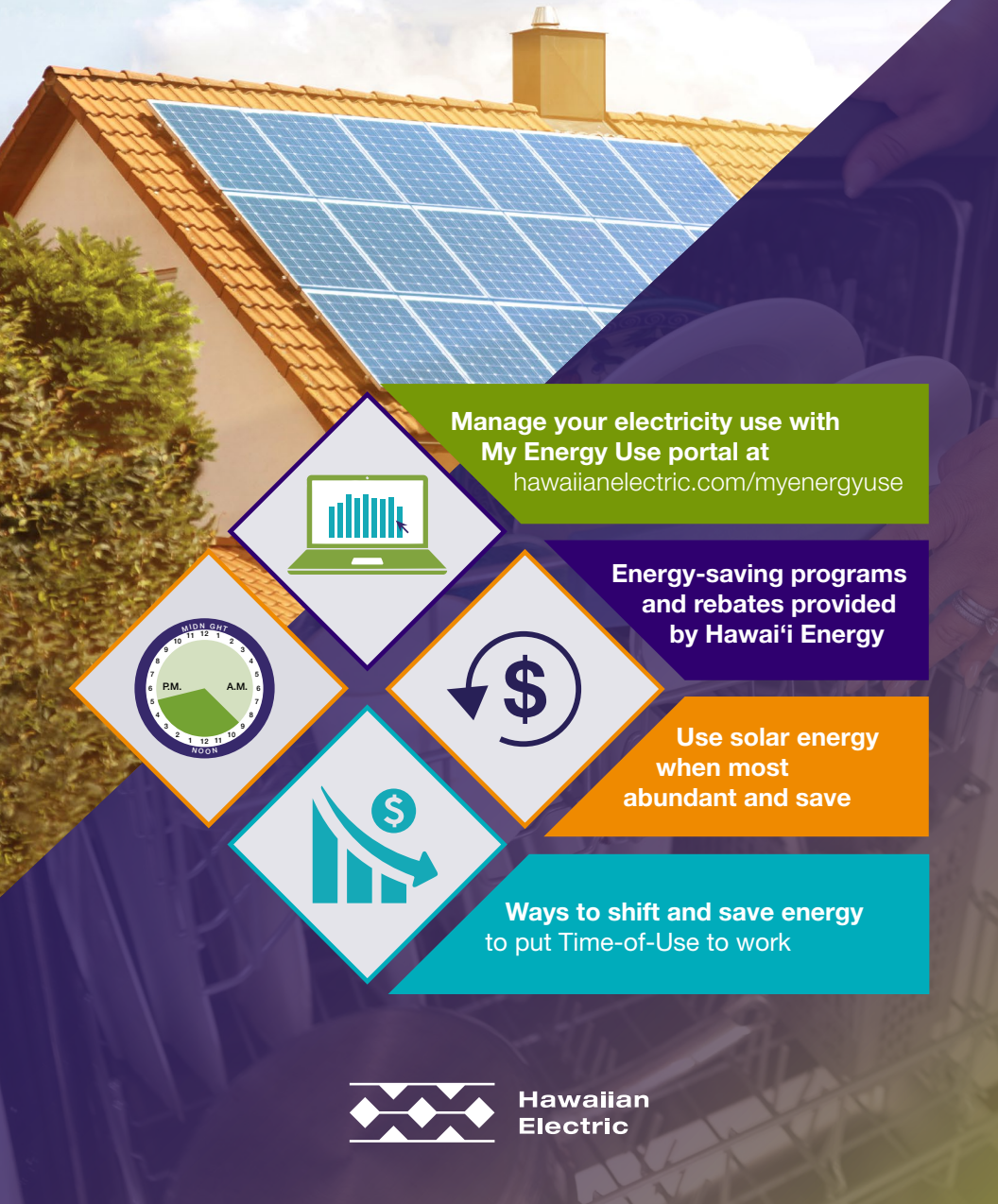


Your **Shift and Save** Program Toolkit

**A NEW WAY TO CONTROL YOUR ENERGY USE
AND SAVE MONEY**



Manage your electricity use with
My Energy Use portal at
hawaiianelectric.com/myenergyuse



Energy-saving programs
and rebates provided
by **Hawai'i Energy**



Use solar energy
when most
abundant and save



Ways to shift and save energy
to put Time-of-Use to work



**Hawaiian
Electric**

Use This Toolkit to Take Advantage of the Shift and Save Program

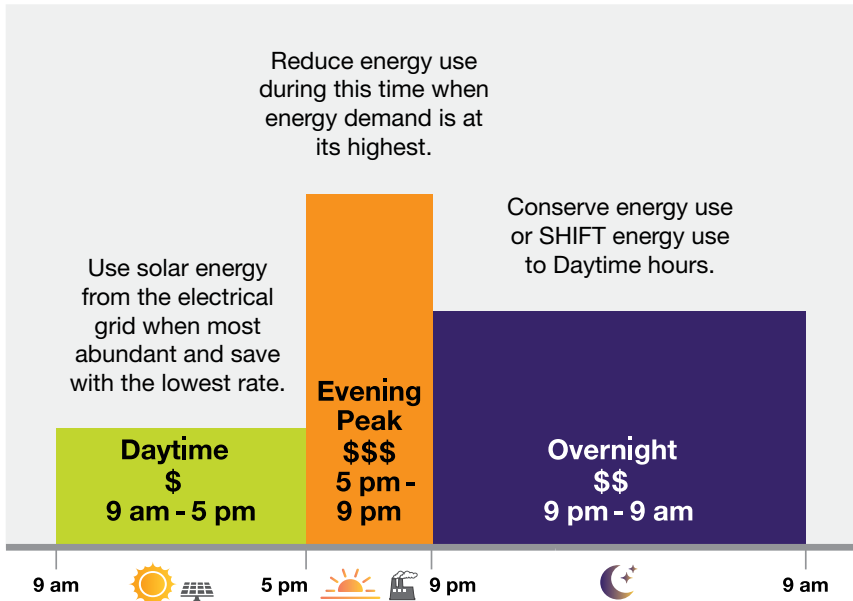
This toolkit gives you tips on how to make the most cost-effective use of your electricity. In addition to Time-of-Use information, learn how to get further savings through programs from Hawai'i Energy. And be sure to redeem the coupons to start saving today.

SAVE ENERGY, MONEY AND THE ENVIRONMENT

- ◆ Time-of-Use rates are lower during the middle of the day to encourage customers to save money and take advantage of abundant solar power available on the electrical grid.
- ◆ This program supports our overarching plans to help reduce environmental impacts for Hawai'i.
- ◆ The rates are also designed to reduce daily energy peak demand, which typically occurs from 5 p.m. to 9 p.m., and improve reliability of the grid.
- ◆ Shifting more energy use from the evening peak to the daytime means we can reduce the use of fossil fuel generators at night.



How the Time-of-Use Rates Work



How much can you save? It depends on how much you can shift your energy use to daytime hours. The features of this program may match your energy needs.

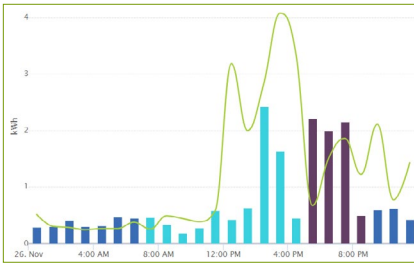
The Time-of-Use rate enables you to save money if you shift your energy use from high-demand evening peak hours that charge more per kilowatt-hour.

The more you shift your electricity use from evening peak to the daytime or overnight hours, the more money you can save. Do simple things like adjusting your thermostat when you leave for work or washing your clothes during daytime hours.



Your My Energy Use Portal Gives You Valuable Information

Here is a sample chart to show how you can manage your electricity use and take advantage of Time-of-Use rates. Sign up now to see your personal usage chart at hawaiianelectric.com/myenergyuse



Time-of-Use (TOU) customers can monitor Daytime, Evening Peak, and Overnight usage, to help determine cost-saving adjustments.

My Energy Use Portal

The “My Energy Use” portal receives data from your advanced meter through a secure wireless network and displays your energy use information. You can easily view how much electricity you use during different hours of the day and compare your usage patterns. This can help you make smart, cost-saving energy adjustments.

- ◆ View your energy consumption and generation in detail, in intervals of 15 minutes.
- ◆ Compare your usage data to previous periods.
- ◆ Add markers to track any important events.
- ◆ Set up notifications to alert you when you reach specific thresholds.
- ◆ Download your usage data in Green Button or CSV format.
- ◆ Share your data with secure secondary user access.



Ways to Shift and Save Energy



Make some dishwashing swaps. Opt for cold water over hot when possible. If you have a dishwasher, run it during the day or overnight. Also cut down on power by air drying instead of using the dishwasher's heater.



Do laundry during the day. Electricity used for laundry – especially if you're not washing cold – can add up, so try for daytime loads. A bonus benefit is being able to air-dry clothes using Hawai'i's fresh trade winds and sunshine! You'll shift your load and reduce wear and tear on your clothes!

Shorten showers. Aim for five minutes or less before 5pm or after 9pm. Cutting just two minutes per shower could save up to 463 kWh and \$139 per year.



Install a timer on your water heater. A timer can allow you to heat water in your tank before the evening peak, so you aren't using as much electricity to heat during those hours. It may take some adjusting to, but this can shift a lot of energy off-peak – even a couple hours can make a difference. Contact an electrician to help you install.

Use ENERGY STAR® appliances. When it's time to replace or add appliances, look for the ENERGY STAR® symbol on clothes washers, dishwashers, refrigerators, air conditioners, and more. This will keep your energy usage down 24/7, not just during the evenings. Visit www.energystar.gov to learn more.



Replace your light bulbs with LEDs. LEDs have longer lifespan, lasting 2.5 times longer than CFLs. A CFL may use 15 watts of electricity, where an LED will only use 7 watts.

Use energy-saving cookware to prepare meals. Use the proper cooking tools for food you're preparing. Toaster ovens, slow cookers, pressure cookers and electric kettles may be the better choice than your oven or stove.



Cooling your home. Use fans and breezes where possible instead of ACs. When you must use your AC, close windows and doors to keep cold air inside. Keep AC filters clean and set the thermostat to 78 degrees.

Let the weather work for you. Consider an energy-efficient, weather-based irrigation controller that automatically adjusts watering schedules based on local weather conditions. These smart devices ensure your yard and plants receive just enough water. No more over-watering!



Hawai'i Energy

See more tips at HawaiiEnergy.com/tips

Take Advantage of These Programs to Save

ENERGY SMART 4 HOMES

FREE energy-saving program for residential properties. Energy Smart 4 Homes (ES4H) is a simple energy-saving opportunity for residential properties. Hawai'i Energy technicians will install FREE LED lightbulbs, high-efficiency showerheads and aerators, and advanced power strips at your home. So sign up today and enjoy up to \$160 in bill savings each year. For more details, go to HawaiiEnergy.com/es4h

REFRIGERATOR TRADE-UP (\$250 REBATE)

A fridge that is 20 years or older uses about twice as much energy as a new ENERGY STAR® certified refrigerator. If it's time for an upgrade, you can get a \$250 rebate when you purchase a qualifying ENERGY STAR®-certified refrigerator from a participating retailer.

RID-A-FRIDGE PROGRAM (\$75 REBATE)

Rid-a-Fridge makes it easy for residential electric customers to surrender old refrigerators and freezers. Hawai'i Energy recycles old, energy-draining working units for FREE and pays you. Residents on the islands of Hawai'i, Maui and O'ahu will receive \$75 for each one. For more details, go to HawaiiEnergy.com/rid-a-fridge

HEAT PUMP WATER HEATER (\$500 IN-STORE INSTANT REBATE)

Another option for reducing your water heating cost is to install an ENERGY STAR® heat pump water heater for your home. Heat pump water heaters are 2x as efficient as a conventional water heater, cutting your water heating costs in half. Get a \$500 Hawai'i Energy instant rebate for this cost-effective upgrade. For more details, go to HawaiiEnergy.com/heatpump

SOLAR WATER HEATING (\$1,250 INSTANT REBATE)

A solar water heater in your home is the best way to save money on your electric bill. With Hawai'i Energy's rebate combined with state and federal tax credits, you can save an incredible amount on the system purchase price in the first year. For more details, go to HawaiiEnergy.com/solar-water-heating

WINDOW AIR CONDITIONER (UP TO \$45 INSTANT REBATE)

ENERGY STAR® certified air conditioners use up to 15% less energy than conventional models. That's a savings of about \$67 per year, per unit on your electric bill.

Right now, get a rebate on qualifying new ENERGY STAR® window ACs from a participating retailer:

- \$25 INSTANT REBATE for standard models at Home Depot or Lowes
- \$45 INSTANT REBATE for dual inverter type at Home Depot

AIR CONDITIONER TUNE-UP (\$75 INSTANT REBATE)

Keep your home's central or split air conditioning system running in tip-top shape by booking a maintenance tune-up. Receive an instant rebate when the tune-up is performed by a participating Clean Energy Ally. Hawai'i Energy recommends having this service done annually. For more information, go to HawaiiEnergy.com/cooling

POOL PUMP WITH VARIABLE FREQUENCY DRIVE (VFD) POOL (\$150 REBATE)

Use up to 18% less energy when you switch your old standard pool pump to an ENERGY STAR® certified VFD pool pump. Get a \$150 rebate toward the purchase of a qualifying model. This program does not apply to newly constructed homes. For more information, go to HawaiiEnergy.com/pool-pump-rebate



Hawai'i Energy

Rebate prices may change throughout the year. Please visit HawaiiEnergy.com/rebates for the most up-to-date information.

Your Time-of-Use Checklist

Follow these five points and you'll be on your way to getting the most from the electricity you use.



Take advantage of your advanced meter. To track your household usage online, learn how to register at hawaiielectric.com/myenergyuse.



Teach everyone in your household how to use electricity wisely. Little changes in energy habits can make a big difference.



Conserve energy today. Remember to visit Hawai'i Energy at hawaiienergy.com/savings.



Read and follow the ways to shift and save energy on page 5. Shift your energy use from high-demand evening peak hours.



After one week, check your My Energy Use portal. Were you able to shift your energy use?

Shifting your energy use away from the evening peak hours by doing things like installing a water heater timer can make a big difference!

Learn how you can save energy at hawaiielectric.com/ShiftandSave

If you have any questions, please contact us at 1-833-483-5666 toll free.



Hawaiian
Electric